

Amendment To A Previous Survey

43B

Cadastral Sheet 2/d (D.12.M.)

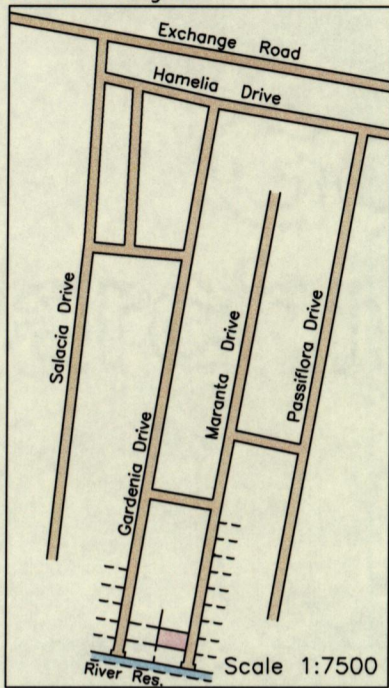
Ward of Couva

County of Caroni

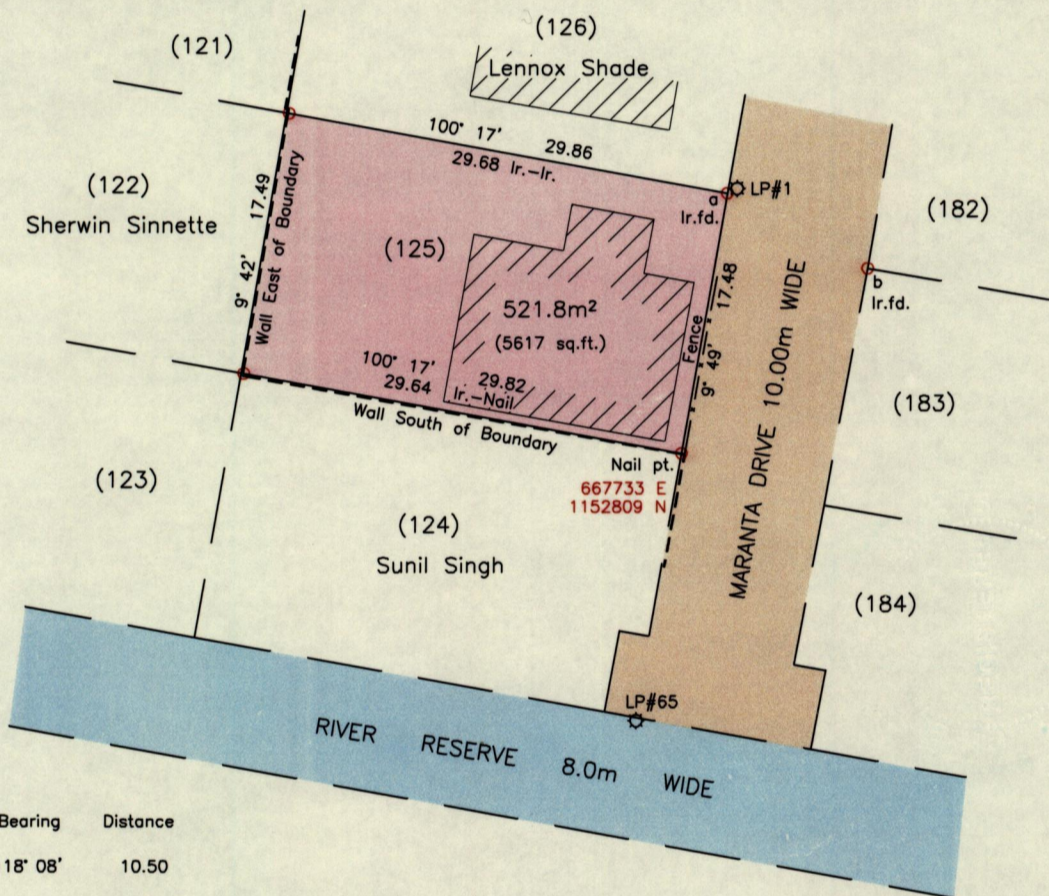
Roystonia, Couva

Process J2#109012

Location Diagram



G N  
U.T.M.



From	To	Bearing	Distance
a	b	118° 08'	10.50

Legend

Lightpole

LP

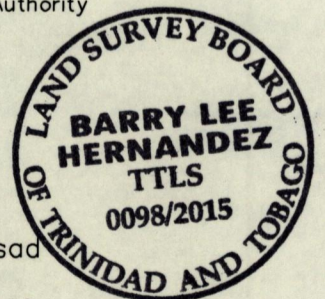
SCALE 1:500

Distances are in metres

Reference:  
PLAN A.N.107

- Notes: ○ Denotes lr.pt. unless otherwise stated  
 Bearings are U.T.M. Grid based on Solar Observations  
 Several surveys by Burton Williams between 2003 to 2005 for the National Housing Authority  
 Coordinates obtained using handheld GPS (UTM Zone 20, Naparima ± 5.0m)

PLAN of a parcel of land coloured pink in the Ward of Couva  
 Containing five hundred and twenty one point eight square metres  
 Surveyed by me, with due authority, in October 2014 for Martin Rampersad  
 Certified Correct in accordance with Regulation 25(1) of the Land Surveyors Regulations 1998.



Checked by .....

Entered on ..... Trinidad and Tobago Land Surveyor, .....

15th April

2015  
 MINISTRY OF FOOD PRODUCTION  
 LAND AND MARINE AFFAIRS  
 Misc03/2014.DWG  
 APR 15 2015  
 #191  
 Lands & Surveys Division