

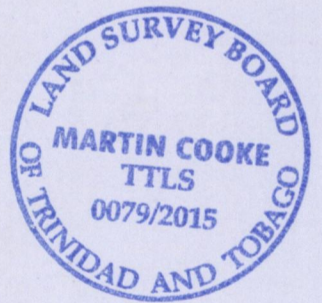
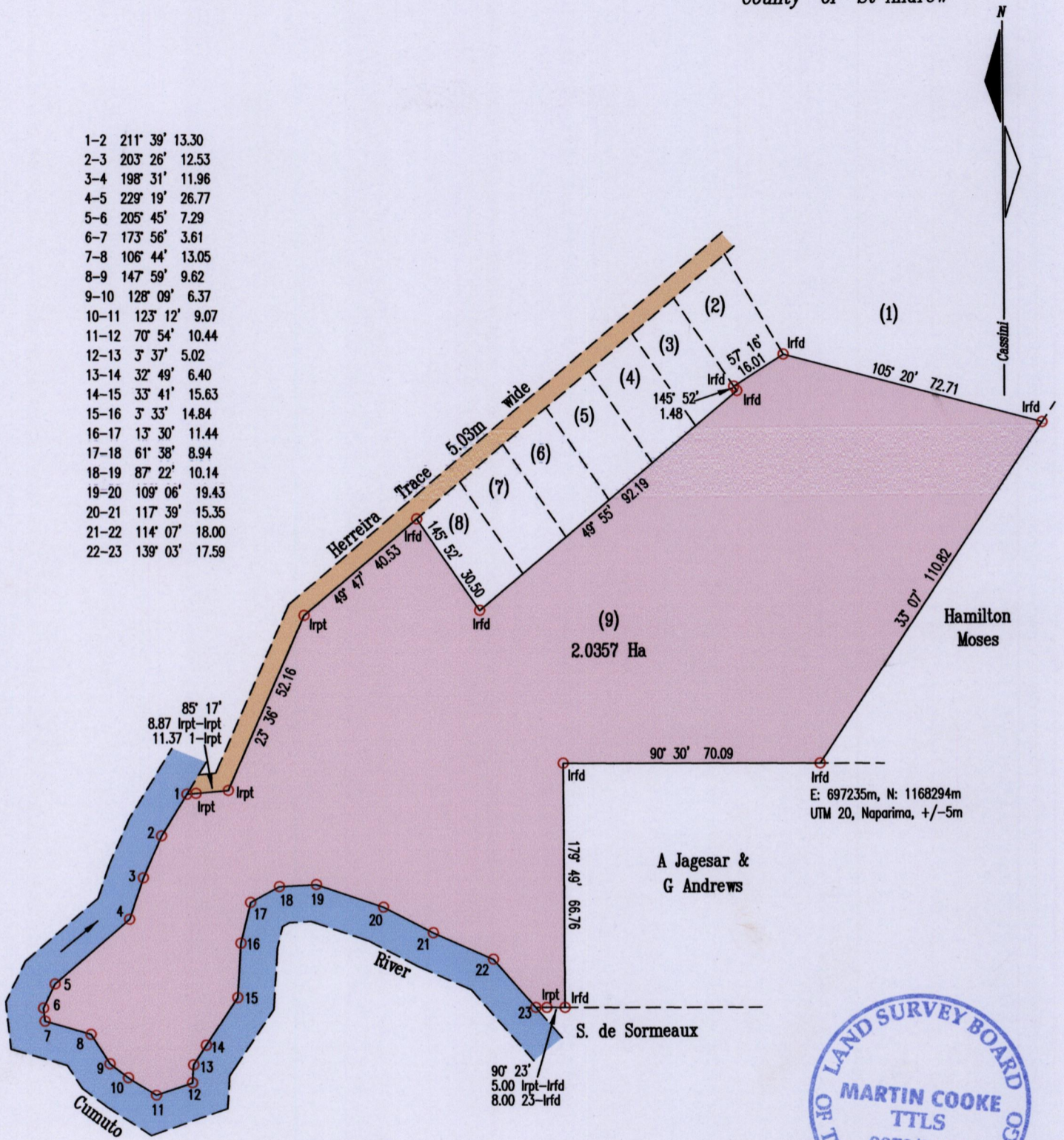
1552

152

U.P.R.N.
Process ~~SD~~#110961

Cadastral Sheet 25E, E.1.E & F
3/a
Ward of Tamana
County of St Andrew

1-2	211° 39'	13.30
2-3	203° 26'	12.53
3-4	198° 31'	11.96
4-5	229° 19'	26.77
5-6	205° 45'	7.29
6-7	173° 56'	3.61
7-8	106° 44'	13.05
8-9	147° 59'	9.62
9-10	128° 09'	6.37
10-11	123° 12'	9.07
11-12	70° 54'	10.44
12-13	3° 37'	5.02
13-14	32° 49'	6.40
14-15	33° 41'	15.63
15-16	3° 33'	14.84
16-17	13° 30'	11.44
17-18	61° 38'	8.94
18-19	87° 22'	10.14
19-20	109° 06'	19.43
20-21	117° 39'	15.35
21-22	114° 07'	18.00
22-23	139° 03'	17.59



Vide:
Plan PG 12
Bk 1250 fol 75

○ Denotes no mark put unless otherwise stated
Bearings are Cassini Grid based on Solar Obs.

Scale 1 : 1500

Distances are in metres

Plan of a Parcel of land coloured pink in the Ward of Tamana
Containing two point zero three five seven hectares
Surveyed by me, with due authority, in July 2015 at the request of Mary Rodriguez-Ramoutar
Certified correct in accordance with Regulation 25(1) of the Land Surveyors' Regulations of 1998

Entered on Trinidad & Tobago Land Surveyor 30th July

