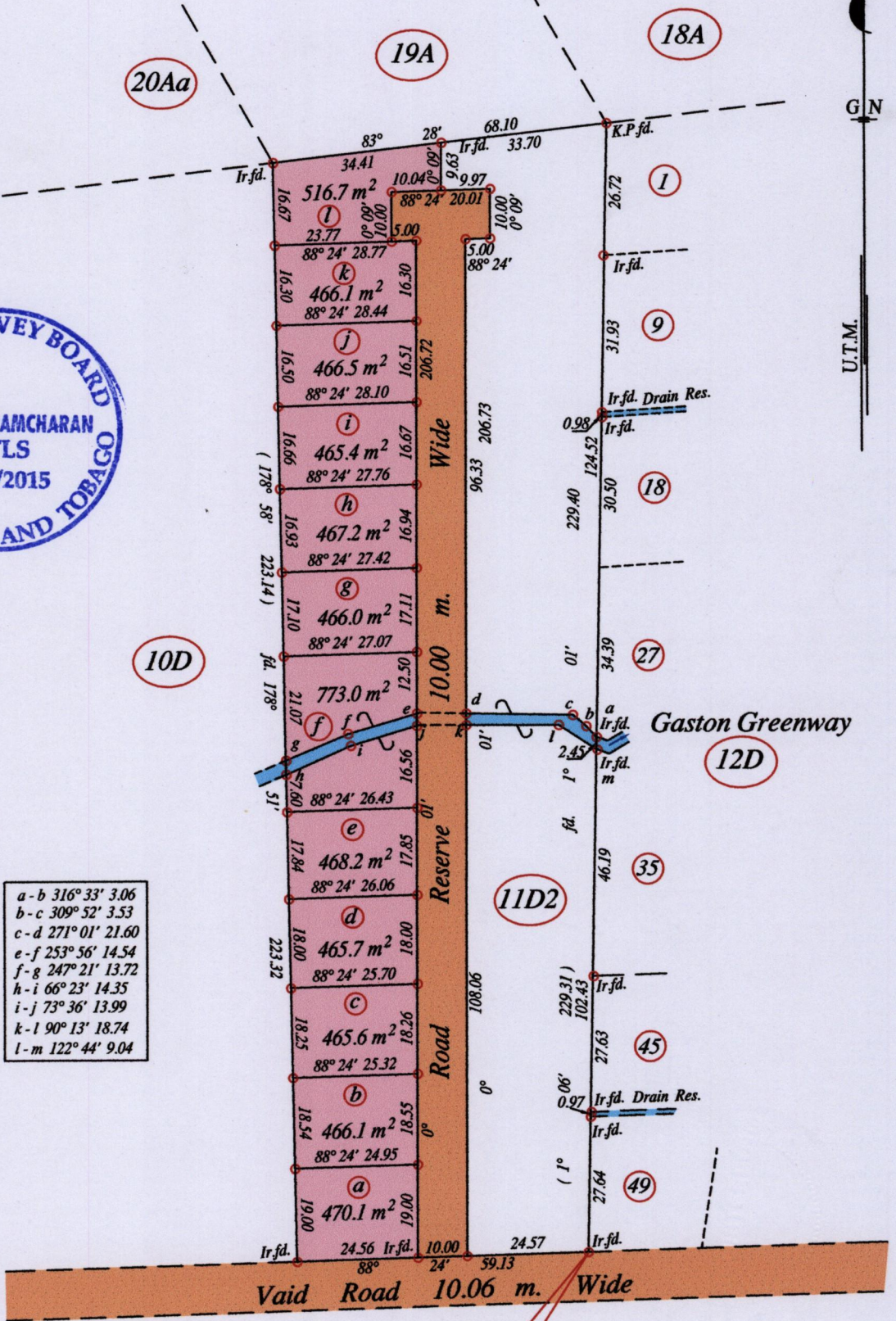




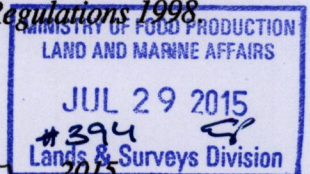
a - b	316° 33'	3.06
b - c	309° 52'	3.53
c - d	271° 01'	21.60
e - f	253° 56'	14.54
f - g	247° 21'	13.72
h - i	66° 23'	14.35
i - j	73° 36'	13.99
k - l	90° 13'	18.74
l - m	122° 44'	9.04



N: 1169523
 E: 707215
 Hand Held GPS.
 Naparima Datum (+/-5m)
 UTM Zone 20.

o Denotes Iron put except stated otherwise. SCALE : 1:1250
 Note: Bearings are U.T.M. grid based on solar observations Distances are in metres
PLAN of 12 Parcels of land coloured pink in the Ward of Manzanilla
 Containing together five thousand nine hundred and fifty six point six square metres
 Surveyed by me, with due authority, in November 2013 and July 2015 for Gerard Francis
 Certified correct in accordance with Regulation 25 (1) of the Land Surveyors Regulations 1998

Winston Ramcharan



Entered on Trinidad & Tobago Land Surveyor 27th July 2015