

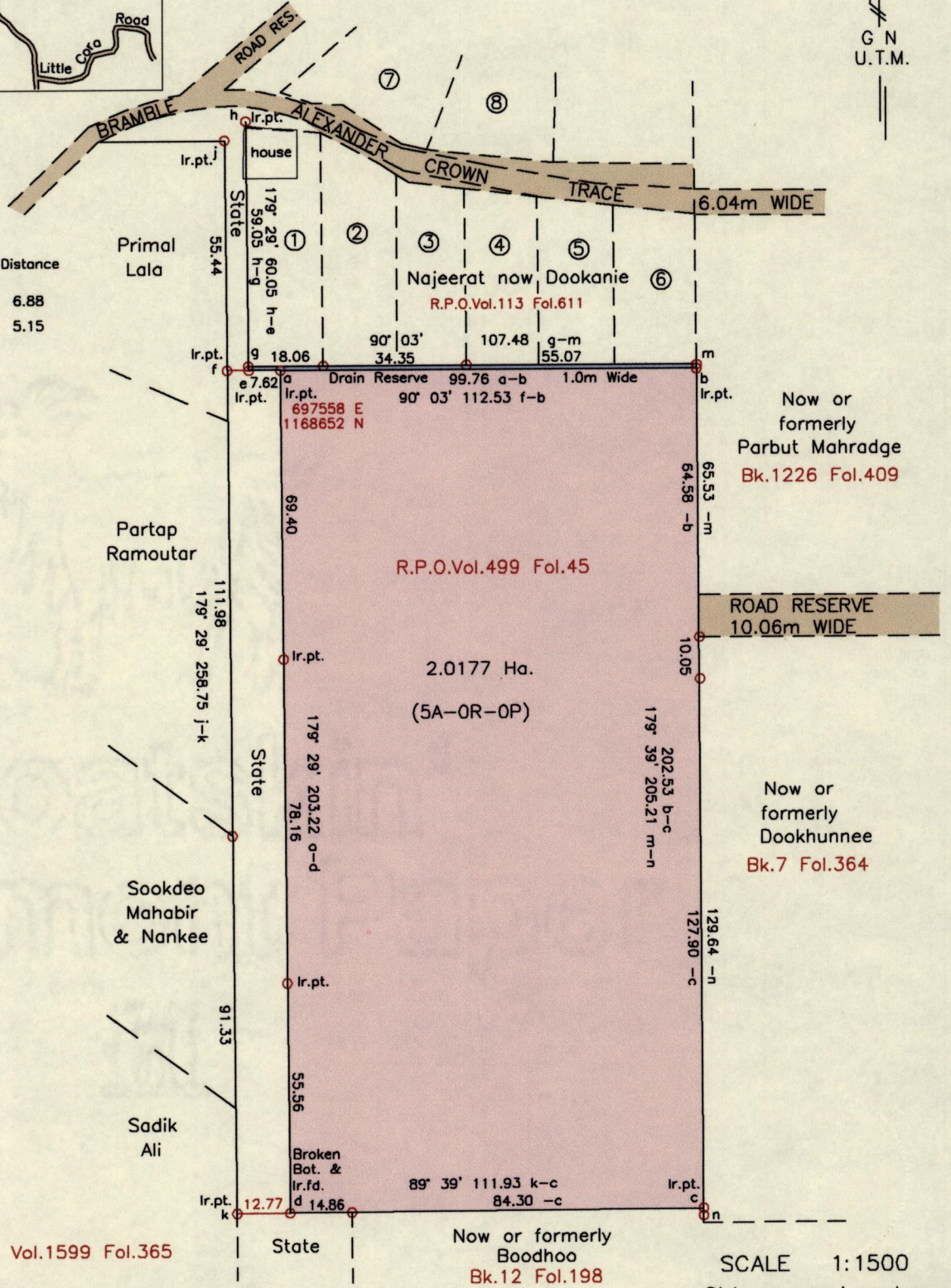
Cadastral Sheet ^{25E} 3/a (E.1.F.)
 Ward of Tamana
 County of St. Andrew
 Cumuto

150
 G N
 U.T.M.

1552

Process SD#110927

From	To	Bearing	Distance
j	h	47° 57'	6.88
f	e	90° 03'	5.15

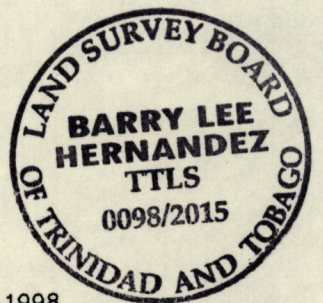


References:
 Bk. 213 Fol. 176
 PLAN P.G. 12
 Memo of Trans. Vol. 1599 Fol. 365

Notes: ○ Denotes Ir.f.d. unless otherwise stated
 Bearings are U.T.M. Grid based on Solar Observations
 Previous survey by Paul Williams in May 2006 for Mary Mangree Sookoo & Ors.
 Coordinates obtained using handheld GPS (UTM Zone 20, Naparima ± 5.0m)

SCALE 1:1500
 Distances are in metres

PLAN of a parcel of land coloured pink in the Ward of Tamana
 Containing two point zero one seven seven hectares
 Surveyed by me, with due authority, in July 2015 for Wayne Cadore
 Certified Correct in accordance with Regulation 25(1) of the Land Surveyors Regulations 1998.



Checked by
 Entered on Trinidad and Tobago Land Surveyor, 27th July 2015.

MINISTRY OF FOOD PRODUCTION
 LAND AND MARINE AFFAIRS
 JUL 28 2015
 #388
 Lands & Surveys Division
 88 2015.DWG