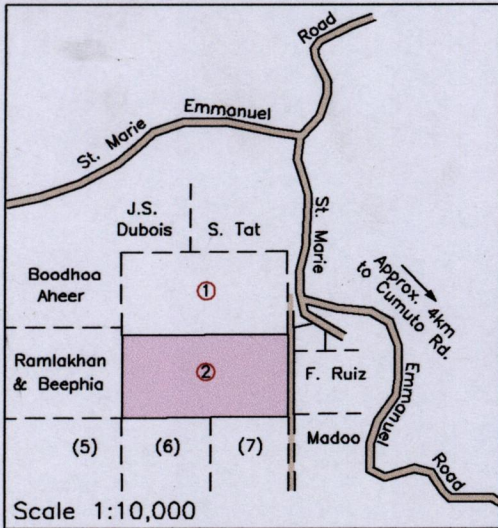


Location Diagram



1552

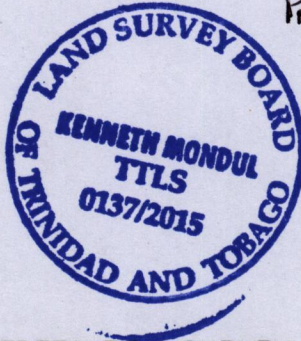
35A
Cadastral Sheet 2/d (E.1.N.)

Ward of Tamana
County of St. Andrew

144

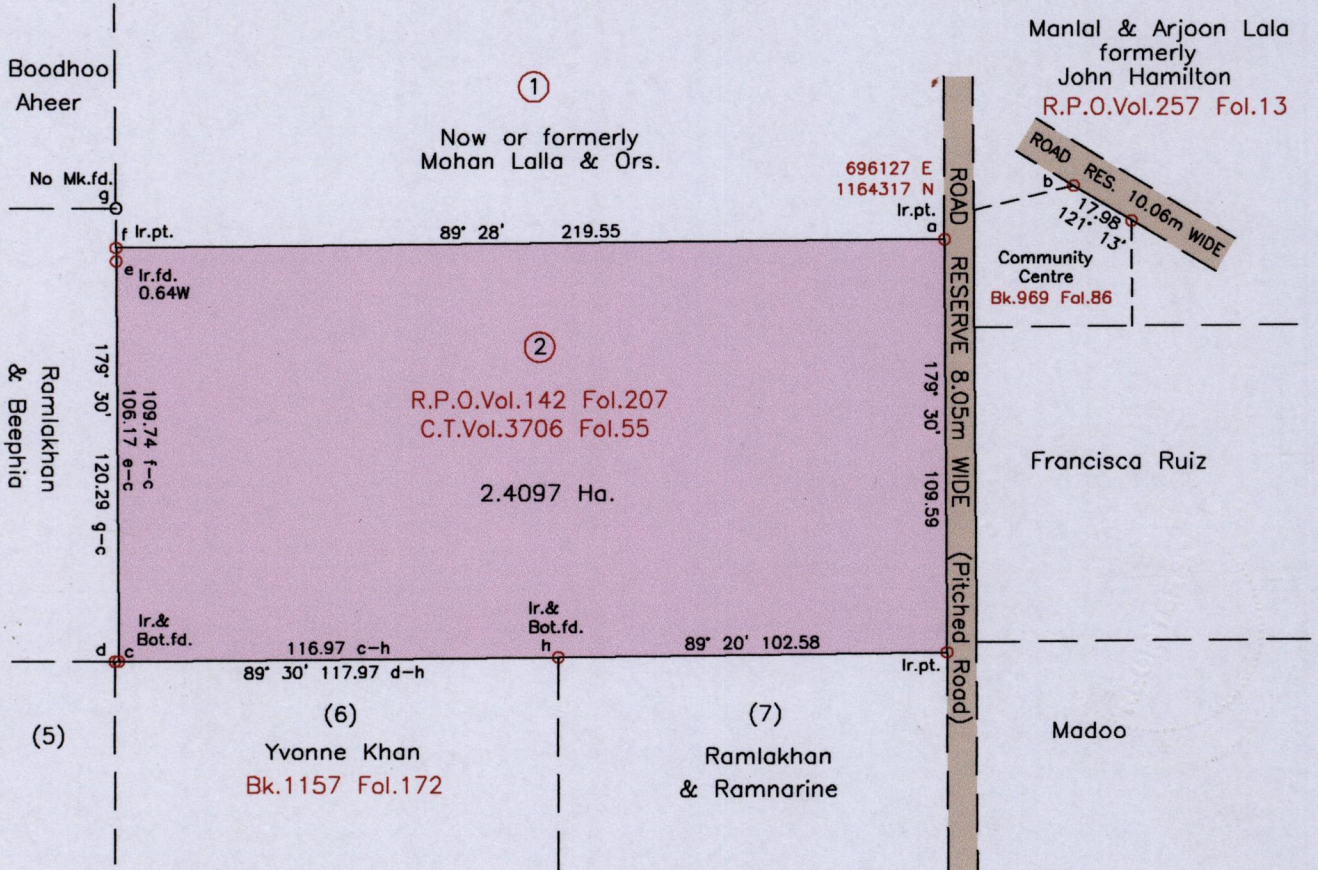
Caratal

Process No. 110 888



G N
U.T.M.

REDEFINITION SURVEY



References:
Bk.1219 Fol.224
Bk.21 Fol.155
Bk.918 Fol.180
PLAN K.H.8

From	To	Bearing	Distance
a	b	67° 21'	36.86

SCALE 1:2000
Distances are in METRES

Notes: ○ Denotes Ir.f.d. unless otherwise indicated
Bearings are U.T.M. Grid based on Solar Observations
Coordinates obtained by handheld GPS (UTM Zone 20, Naparima ± 5.0m)

PLAN of a parcel of land coloured pink in the Ward of Tamana
Containing two point four zero nine seven hectares
Surveyed by me, with due authority, in July 2015 at the request of
City Contracting Services Ltd.

Certified Correct in accordance with Regulation 25(1) of the Land Surveyors Regulations 1998.

Checked by

Kenneth Mondul

Entered on

Trinidad and Tobago Land Surveyor, 20th July, 2015

KM10/2015

