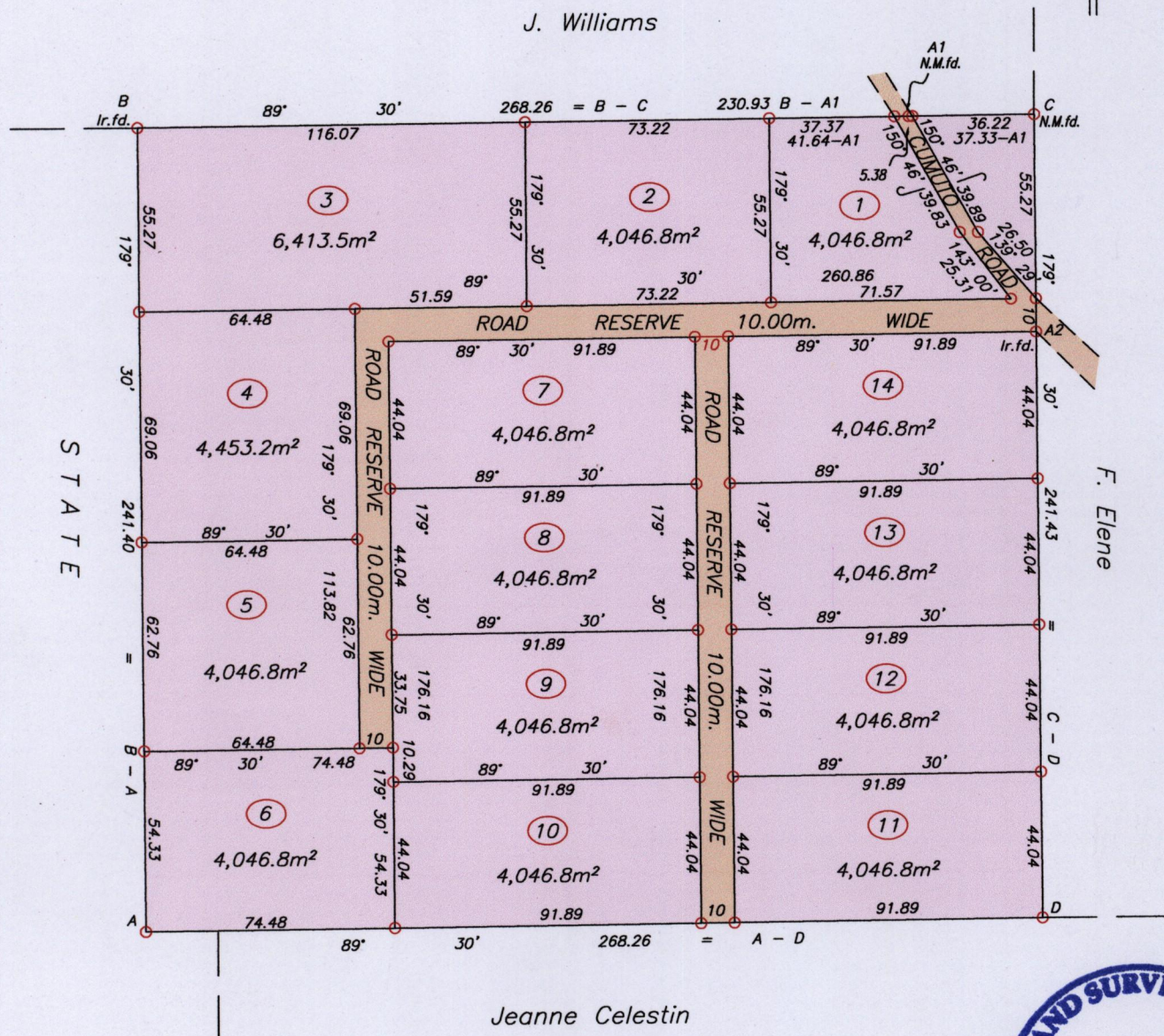


Process ID# 110884

1552 Cadastral Sheet $\frac{25D}{4/b}$ E.1.E. 143

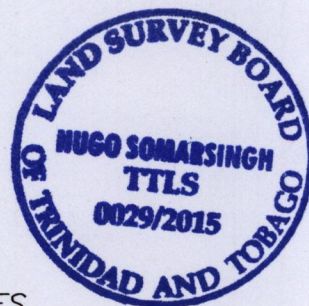
Ward of Tamana
County of St. Andrew

G N
(U.T.M.)



A2 = N 1168772 +/- 5.0m
E 696790

UTM 20 Naparima 1955 Datum
Hand Held GPS



SCALE 1:2000
Distances are in METRES

- Denotes Iron put unless otherwise stated
- Bearings are U.T.M. Grid based on Solar observations

PLAN of 14 Parcels of land coloured pink in the Ward of Tamana
Containing together five point nine four two eight hectares
Surveyed by me, with due authority, in May & June 2015 for Sanjeeve Sammy
Certified correct in accordance with Regulation 25 (1) of the Land Surveyors Regulations 1998.

Hugo Somarsingh

T.T.L.S.

Entered on

Trinidad & Tobago 17th July 2015
Land Surveyor

