

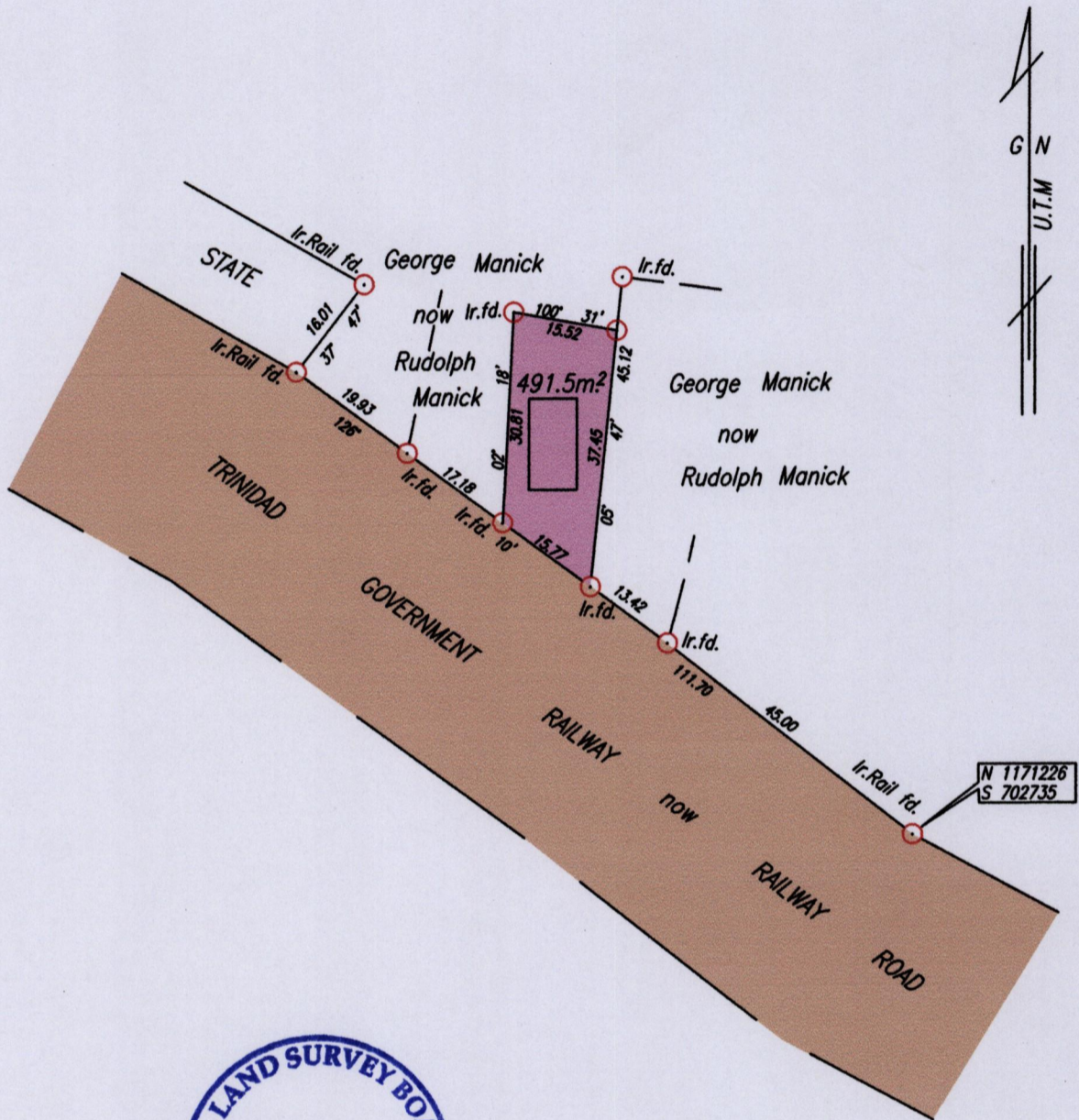
1552

141

Process ID# 110865

Cadastral Sheet C.21.P. ^{25F}/_{1/b}
Ward of Manzanilla
County of St. Andrew

See Plan A.C. 43



SCALE 1:1000

Distances are in metres

○ Denotes Iron put except otherwise stated.

See Bk 1621:177

Coordinates obtained by hand held G.P.S. (Naparima 20) ± 5.0m.

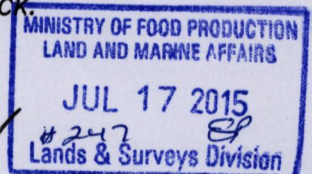
Bearings are based on Solar Observations

Plan of a Parcel of land coloured pink in the Ward of Manzanilla.
Containing four hundred and ninety one point five square metres.

Surveyed by me, with due authority, in May 2015 for Rudolph Manick.

Certified correct in accordance with Regulation 25 (1)
of the Land Surveyors' Regulations 1998.

Entered



Trinidad & Tobago Land Surveyor. *Hugo Somarsingh*. 2015.