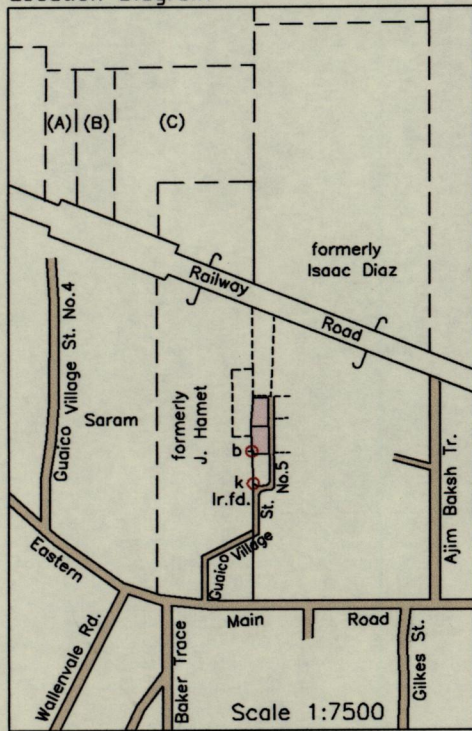


Location Diagram



From	To	Bearing	Distance
e	f	77° 13'	5.28
g	h	80° 15'	6.42
d	c	356° 25'	3.58
c	a	266° 26'	0.97
b	k	177° 20'	31.92

Krishna Badaloo
Survey by Anwar Ali in January 2002

Dorothy Albertia

Survey by Trevor Koylass in March 2015

- Legend**
- Lightpole
 - Telephone Pole
 - Gate
 - Fence
 - Existing Drain 1.0m Wide

Reference:
Bk.158 Fol.39

- Notes: ○ Denotes Ir.pt. unless otherwise stated
Bearings are U.T.M. Grid based on Solar Observations
Coordinates obtained using handheld GPS (UTM Zone 20, Naparima ± 5.0m)

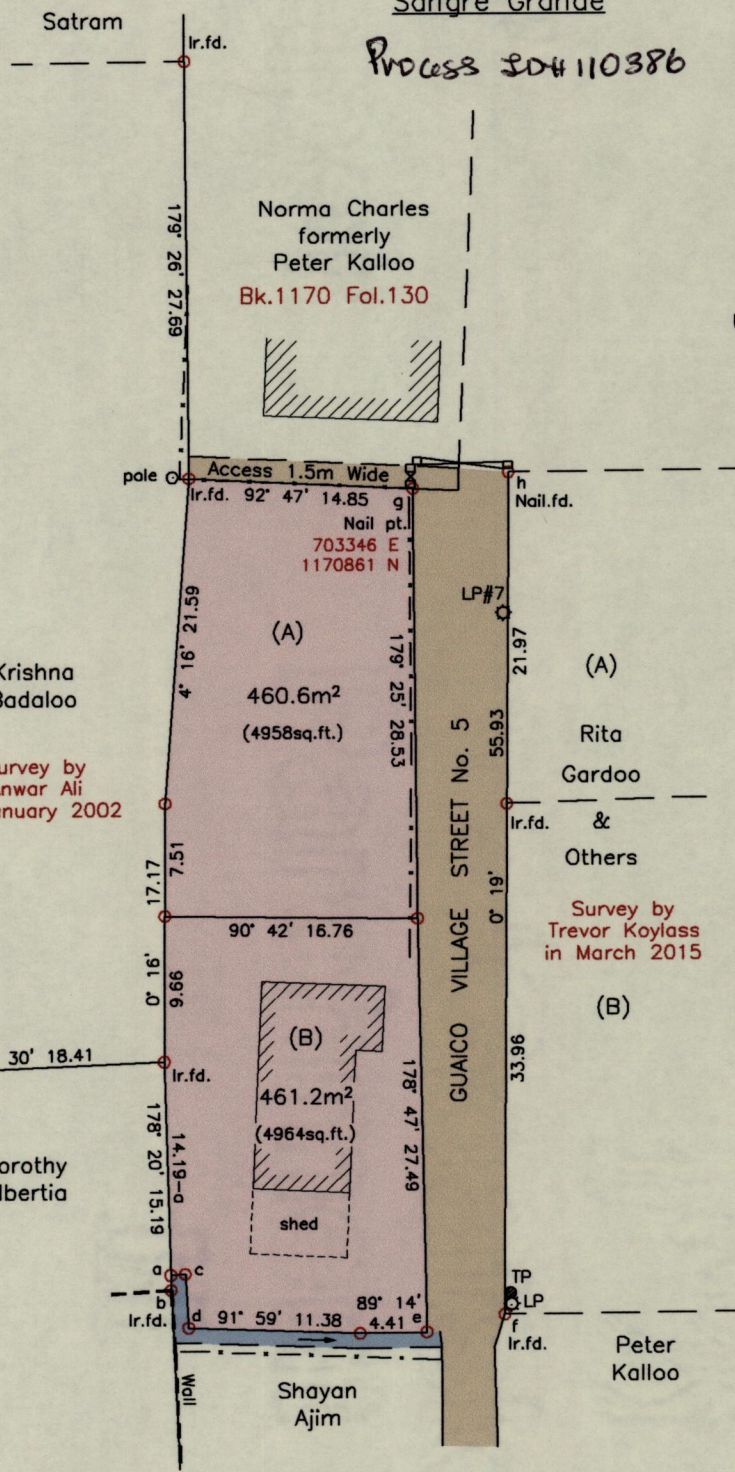
PLAN of 2 parcels of land coloured pink in the Ward of Manzanilla
Containing together nine hundred and twenty one point eight square metres
Surveyed by me, with due authority, in May 2015 for Fabrice Tilokee
Certified Correct in accordance with Regulation 25(1) of the Land Surveyors Regulations 1998.

Checked by *Burton Will*

Entered on Trinidad and Tobago Land Surveyor 23/6/2015.

MINISTRY OF FOOD PRODUCTION
LAND AND MARINE AFFAIRS
JUN 24 2015
352
Lands & Surveys Division

G412015.DWG



SCALE 1:500
Distances are in metres

