

1552

131

R.P.O. Vol. 156 Fol. 353

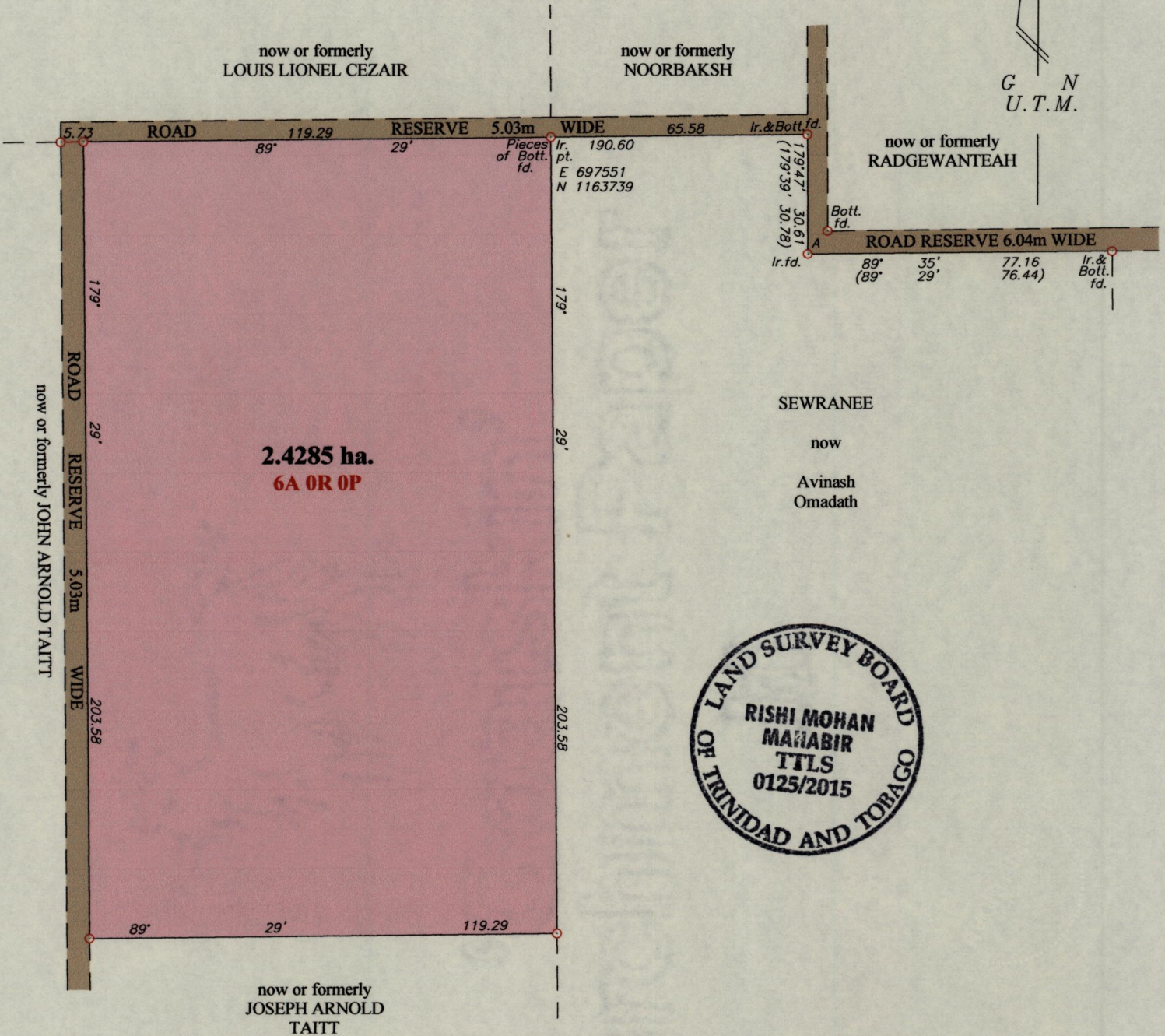
Cadastral Sheet E.6.B. 44A
1/a

Process JDA 110376

Ward of Tamana

County of St. Andrew

G N
U.T.M.



A - Bott. fd. 40° 35' 7.79

○ Denotes Ir.pt. unless otherwise stated

Co-ordinates are U.T.M. Zone 20N Naparima Datum +/-5m
obtained from a handheld GPS

Bearings are U.T.M. grid based on solar observations

Vide Bks.29 fol.24
24 fol.217
Plan D.1.63

SCALE 1/1500

Distances are in metres

PLAN of the Perimeter of a Parcel of land coloured pink in the Ward of Tamana
Redefined by me, with due authority, in May & June 2015 for Derwin Celestin
Certified Correct in accordance with Regulation 25 (1) of the
Land Surveyors Regulations 1998

Checked by.....

Derwin Celestin

Entered..... Trinidad & Tobago Land Surveyor..... 18th June 2015

MINISTRY OF FOOD PRODUCTION
LAND AND MARINE AFFAIRS
JUN 18 2015
#271 RR
Lands & Surveys Division

59P