

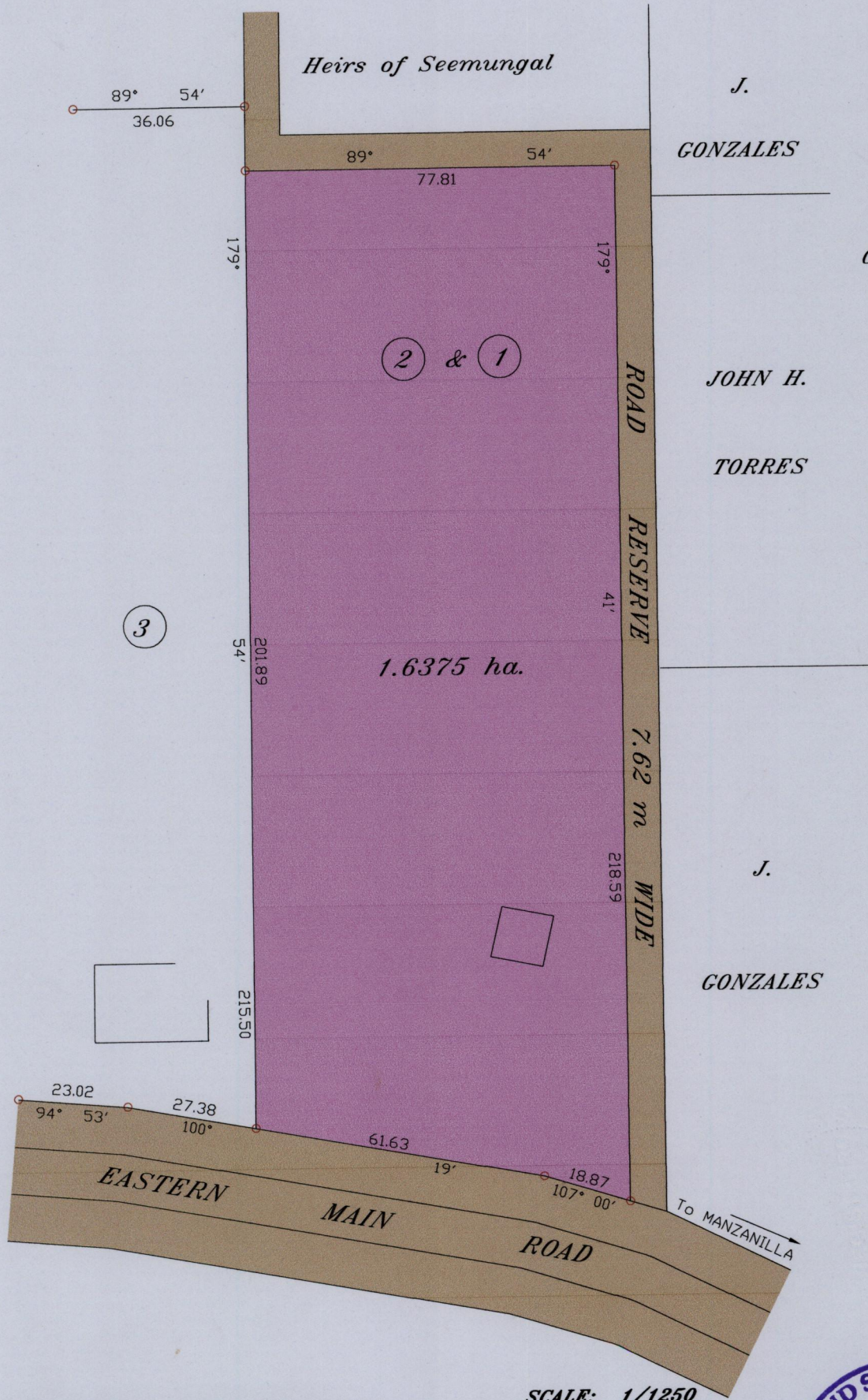
1552

Cadastral Sheet E.2.L.  
Ward of Manzanilla.  
County of St. Andrew.

26D  
4/d

121

Process SD# 110311



SCALE: 1/1250

○ Denotes iron put unless otherwise stated

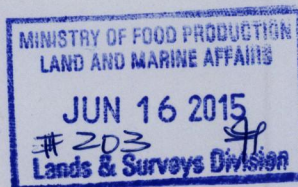
Note : To obtain compass bearing subtract minutes Distances are in Metres.  
PLAN of a parcel of land coloured pink in the Ward of Manzanilla.  
Containing one point six three seven five hectares.  
Surveyed by me, with due authority, in March, 2001 for Chad Allain  
Certified correct in accordance with regulation 25 (1) of the  
Land Surveyors' Regulations 1998,



Checked by.....

Entered on.....

Trinidad & Tobago Land Surveyor..... 10-6-2015



368