

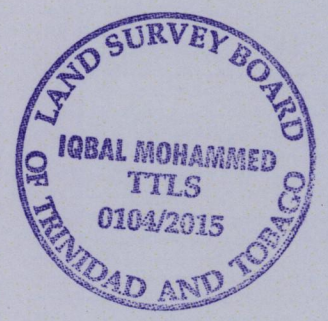
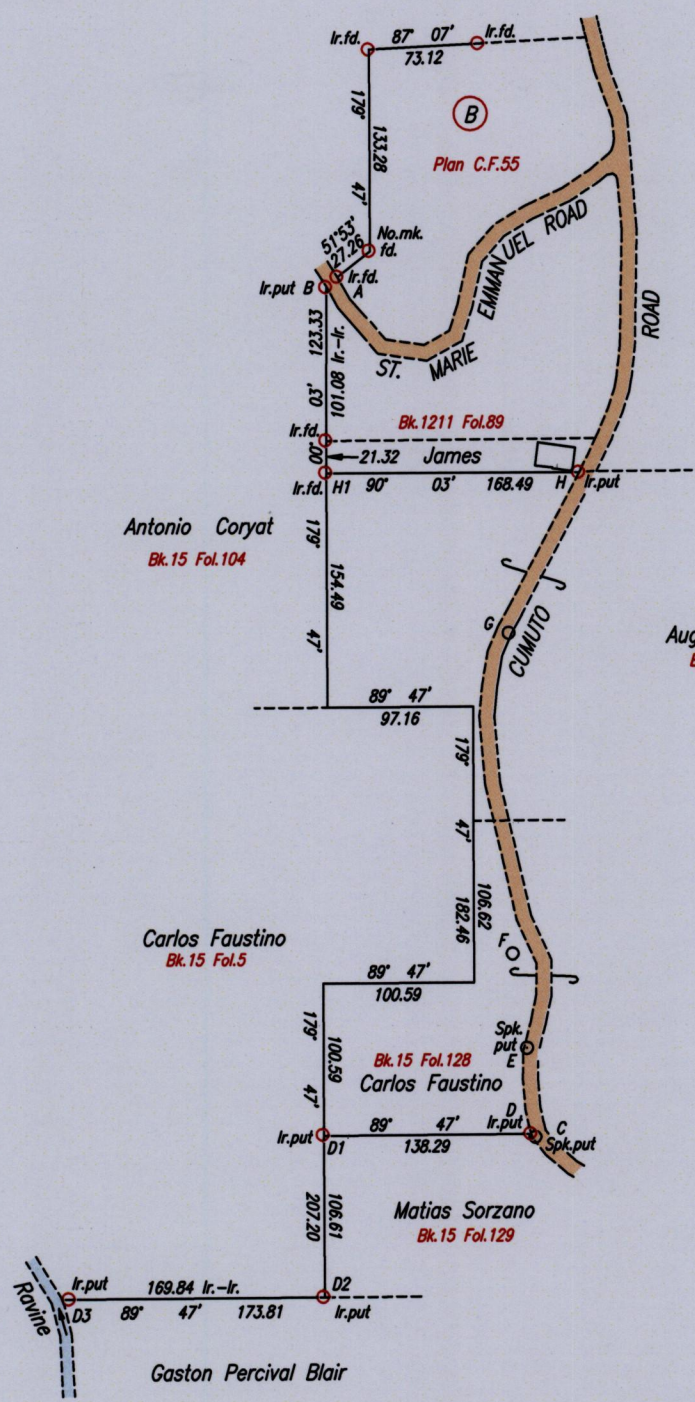
1552

Ward of Tamana 1183
County of St. Andrew
Cadastral Sheet E.1.F. 25E
3/c

Process ID# 110301

REDEFINITION PLAN

"LITTLE CORA"



A - B	227° 44'	10.10
C - D	305° 43'	3.31
C - E	354° 34'	59.46
E - F	351° 16'	62.65
F - G	359° 16'	211.93
G - H	24° 02'	115.80

Iron A
697503 mE, 1167967 mN
U.T.M. 20, Nap. (+/- 3m.)
G.P.S. (Handheld)

SCALE 1/5000
Distances are in metres

Bearings are Cassini Grid based on Solar Observations
To obtain UTM bearings, subtract 18 minutes

PLAN Showing Boundary Lines H-HI, D-D1, D1-D2 & D2-D3 in the Ward of Tamana
Surveyed by me with due authority, in June 2015 for Arawak & Company Ltd
Certified Correct in accordance with Regulation 25 (1) of The Land Surveyors' Regulations 1998,

Entered on *F. J. M. M.*

Trinidad & Tobago Land Surveyor (T.T.L.S.) *8/6/*

