

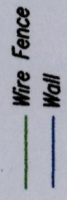
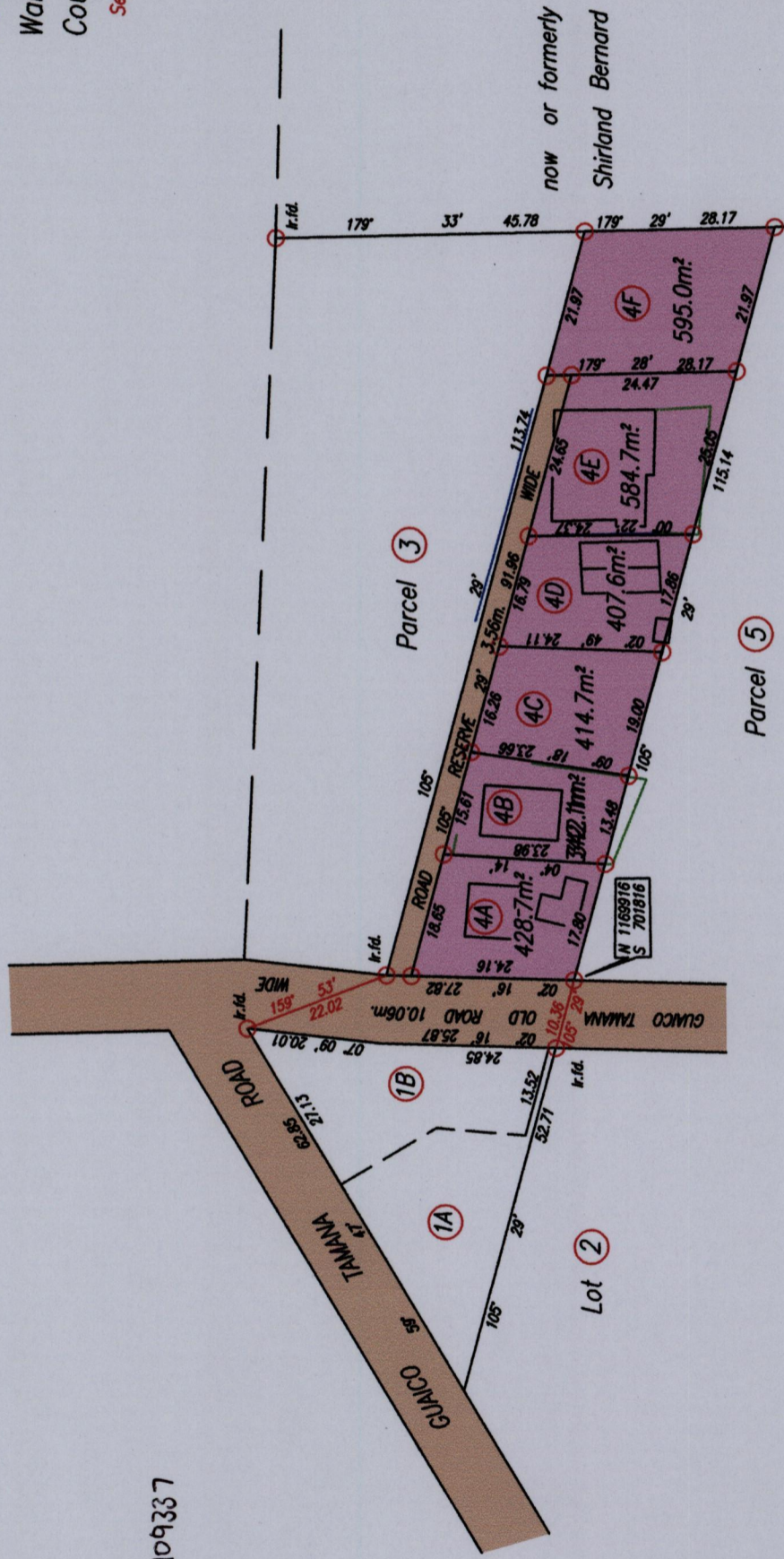
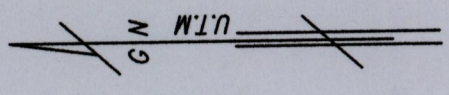
Cadastral Sheet E.1.D. $\frac{25E}{2/D}$
 Ward of Tamana
 County of St. Andrew

See Bk. 830A.47
 Bk. 1122 fol. 81
 Bk. 753 fol. 57

Process JD# 109337

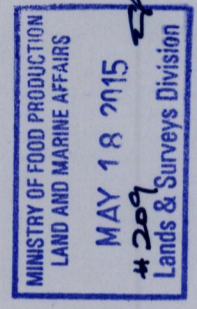
1552

107



SCALE 1:1000

Distances are in metres
 ○ Denotes Iron put except otherwise stated.



Coordinates obtained by hand held G.P.S. (Naparima 20) \pm 5.00m.
 Bearings are based on Solar Observations
 Plan of 6 Parcels of land coloured pink in the Ward of Tamana.
 Containing together zero point two seven three hectares.
 Surveyed by me, with due authority, in April 2015 for Chandrawtee Moteelal & Ors.
 Certified correct in accordance with Regulation 25 (1)
 of the Land Surveyors' Regulations 1998.

H. Chandrawtee Moteelal
 Trinidad & Tobago Land Surveyor. 18th May 2015.

Entered

546