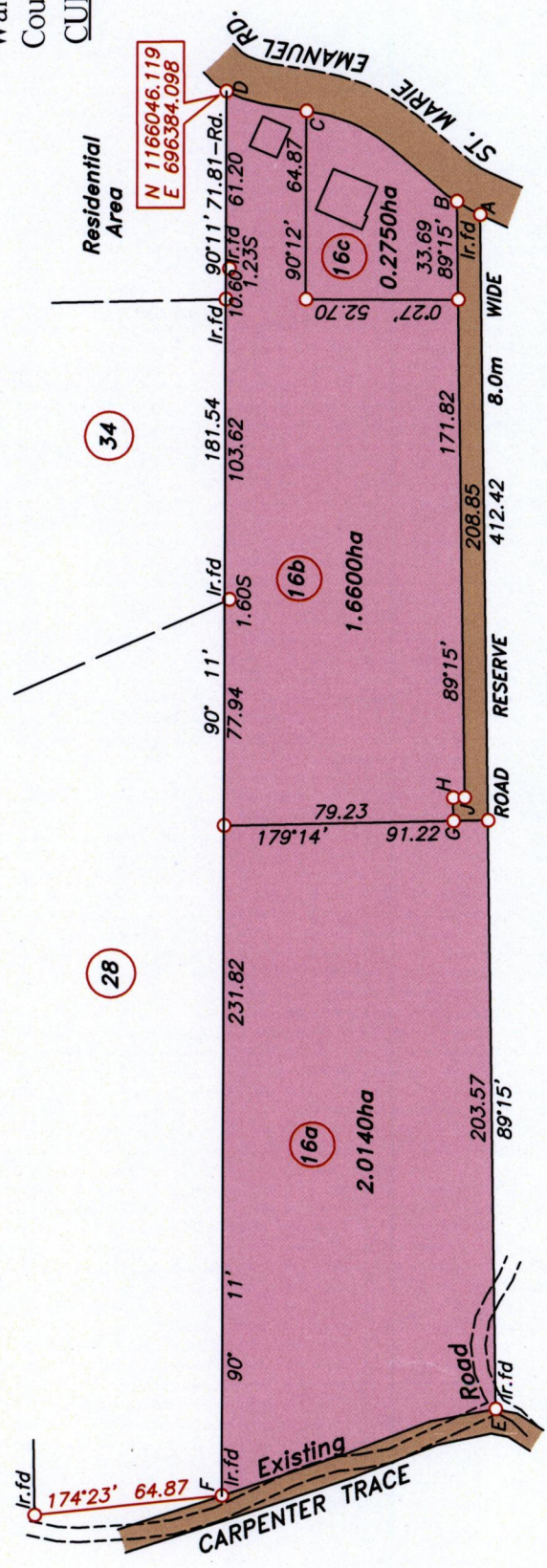


U.P.R.N.....

Cadastral Sheet D.15 & E.11 35A
2/b/4

Ward of Tamana
County of St. Andrew
CUMUTO

Process IS# 109257



Residential Area
N 1166046.119
E 696384.098

Now or formerly
Gilbert Emmanuel

LINE	BEARING	DISTANCE
A-B	29°29'	9.25
B-C	31°16'	60.87
C-D	14°22'	28.46
E-F	162°42'	98.13
G-H	89°14'	8.00
H-J	179°15'	4.00

Note- UTM Zone 20 (WGS 84) Coordinates obtained from hand held GPS receiver + 3.00m

○ Denotes iron put, except otherwise stated.

Bearings are U.T.M grid based on solar observations

PLAN of 3 parcels of land coloured pink in the Ward of Tamana Containing together three point nine four nine zero hectares.

Surveyed by me, with due authority on 23rd March 2015 at the request of Imran Mohammed Certified Correct in accordance with Regulation 25 (1) of the Land Surveyors Regulations 1998.

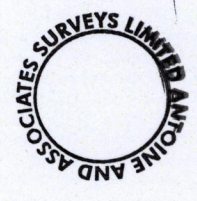
Entered

MINISTRY OF FOOD PRODUCTION
LAND AND MARINE AFFAIRS
7 APR 09 2015
Lands & Surveys Division

.....
Trinidad & Tobago Land Surveyor.....
9th April.....2015.

SCALE 1:2500

Distances are in metres



U.T.M
G N 1552

102

