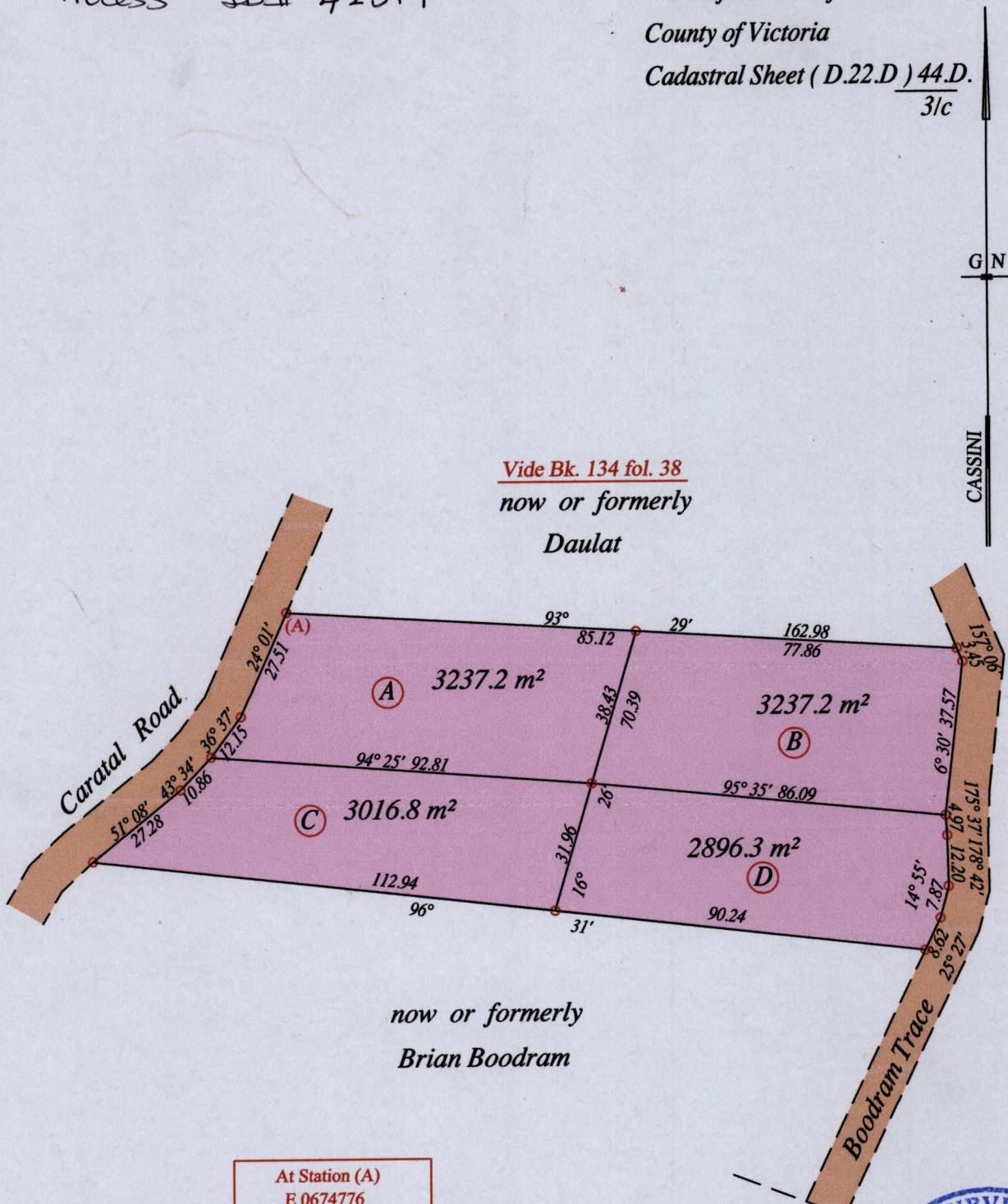


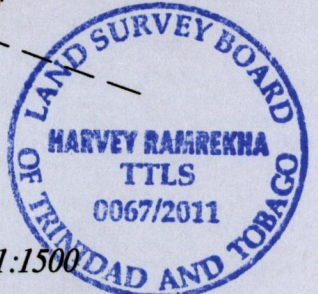
1549

Process ID# 42519

Ward of Pointe - of - Pierre  
County of Victoria  
Cadastral Sheet ( D.22.D ) 44.D.  
3/c



At Station (A)  
E 0674776  
N 1144952  
Reading taken with  
Handheld G.P.S.  
U.T.M. Zone 20  
Naparima  
± 5 m.



o Denotes Iron put except stated otherwise.

SCALE : 1:1500

Note: Bearings are cassini grid based on solar observations

Distances are in metres

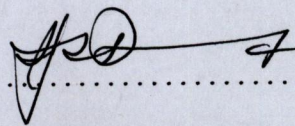
PLAN of a Parcel of land coloured pink in the Ward of Pointe - of - Pierre

Containing together twelve thousand three hundred and eighty seven point five square metres


Surveyed by me, with due authority, in March 2011 for Mr. R. Ramnath & Ors.

In accordance with Regulation 25 (1) of the Land Surveyors' Regulations 1998,

I certify that this plan is correct.

Checked by ..... 

Entered on ..... Trinidad & Tobago Land Surveyor ..... 10.08.2011

MINISTRY OF AGRICULTURE  
Survey & Mapping Division  
#100   
AUG 10 2011  
LANDS & MARINE RESOURCES