

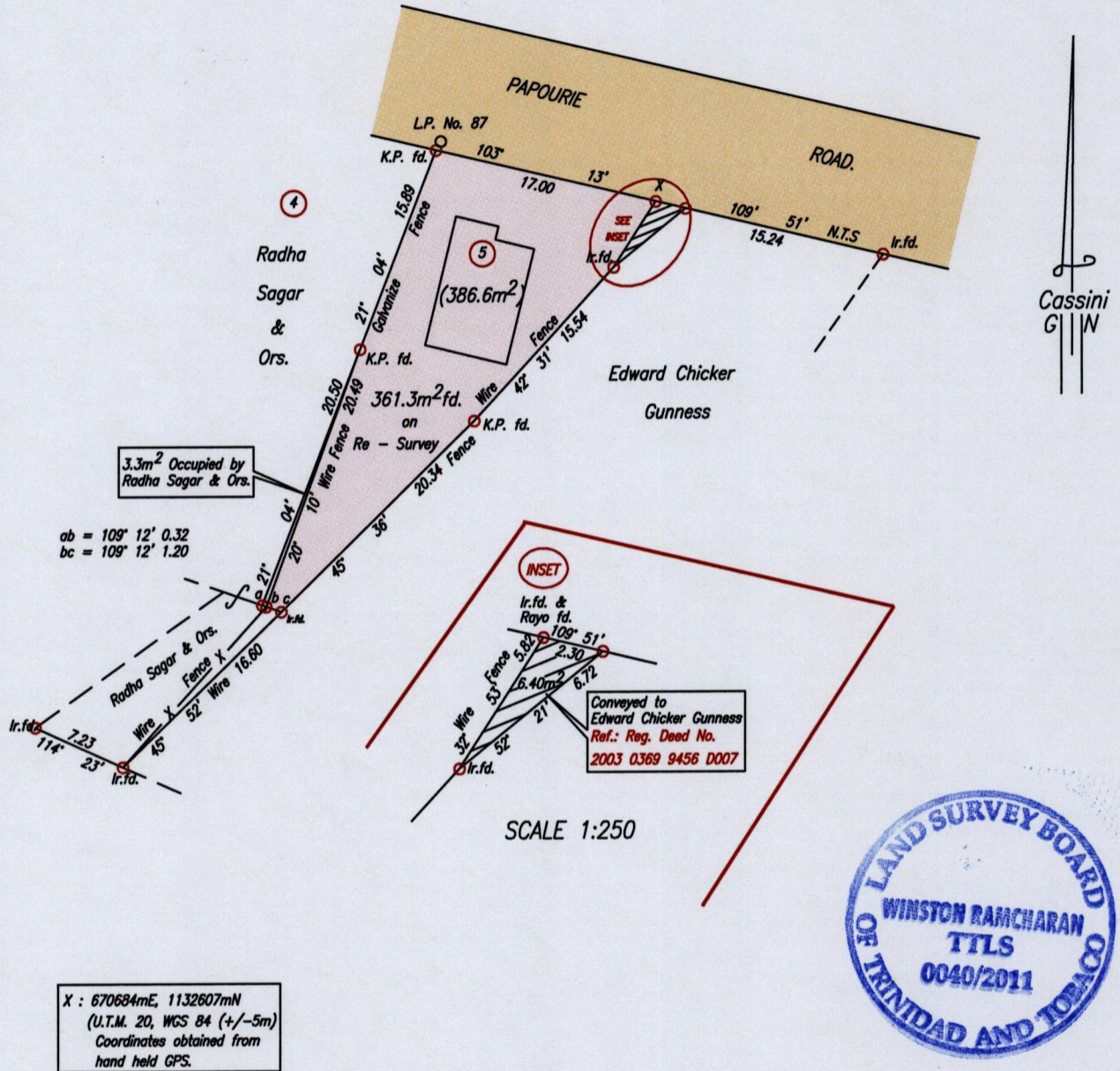
Process ~~DA~~ 45635

Ref. : Reg. Deed No. 2002 0216 2934 D001

1548

98

Cadastral Sheet G.8.B. & C.  $\frac{63C}{1/b}$   
Ward of Naparima  
County of Victoria  
Diamond Village



SCALE 1:250



SCALE 1:500

Distances are in metres

○ Denotes Iron put except otherwise stated  
 Bearings are Cassini Grid based on Solar Observations  
 PLAN of a Parcel of land coloured pink in the Ward of Naparima  
 Containing three hundred and sixty one point three square metres.  
 Surveyed by me, with due authority, in October, 2011 at the request of Kelly Amar Sarwan  
 In accordance with Regulation 25 (1) of the Land Surveyors' Regulations 1998,  
 I certify that this plan is correct.

*Winston Ramcharan* .....

Entered on..... Trinidad & Tobago Land Surveyor. *9<sup>th</sup>* November . . . . . 2011.

