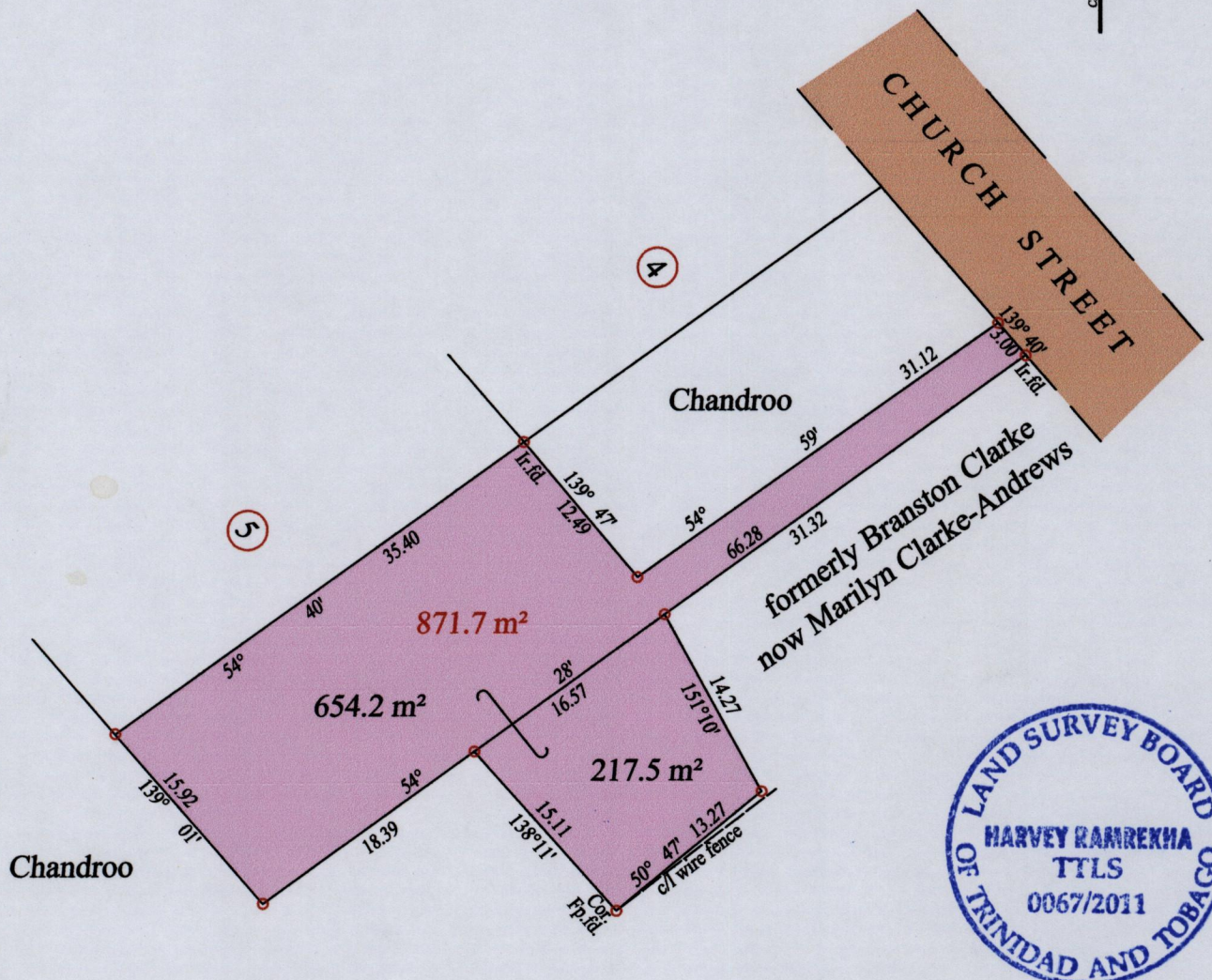


1548

95

Process ~~SD~~ 45143

Ward of Naparima
County of Victoria
Cadastral Sheet (G.7.D.) 63.B.
1/b



At Station (A)
E 0665723
N 1132901
Reading taken with
Handheld G.P.S.
U.T.M. Zone 20
Naparima
± 5 m.

See Tol 94

Vide Bk. 1218 fol. 70

○ Denotes Iron put except stated otherwise.

SCALE : 1:500

Note: Bearings are cassini grid based on solar observations

Distances are in metres

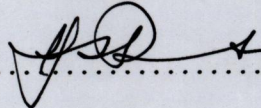
PLAN of a Parcel of land coloured pink in the Ward of Naparima

Containing eight hundred and seventy one point seven square metres

Surveyed by me, with due authority, in September 2011 at the request of Mr. R. Gopeesingh

In accordance with Regulation 25 (1) of the Land Surveyors' Regulations 1998,

I certify that this plan is correct.

Checked by 

Entered on Trinidad & Tobago Land Surveyor 4. 11. 2011

