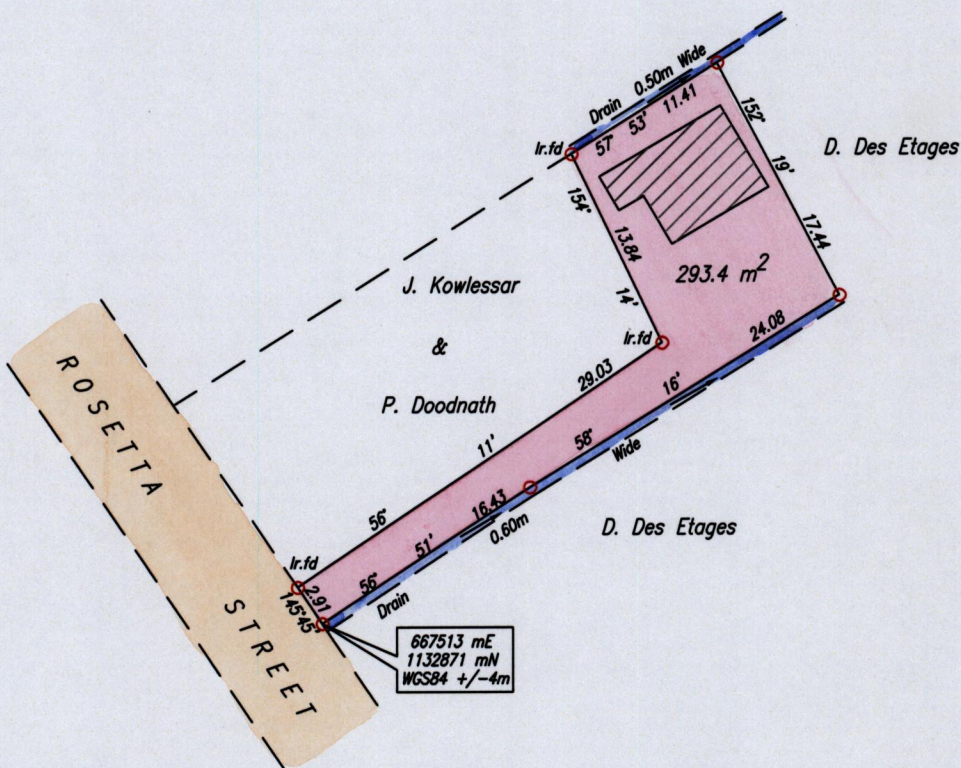
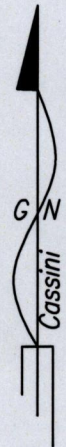


Process ID# 45062

Cadastral Sheet G.8.A 63B
Ward of Naparima 2/a
County of Victoria

RAMBERT VILLAGE



Coordinates obtained from hand held G.P.S.

○ Denotes Iron put except where otherwise stated

Bearings are Cassini Grid based on Solar Observations

PLAN of a Parcel of land coloured pink in the Ward of Naparima

Containing two hundred and ninety three point four square metres

Surveyed by me, with due authority, in October 2011 for Mary Gopee & Susan Gopee

In accordance with Regulation 25 (1) of the Land Surveyors' Regulations 1998,

I certify that this plan is correct.

Checked by

Roopchand Deonanan

Entered on

Trinidad & Tobago Land Surveyor. 1st November 2011.

PATH = ADA004 D:/DEO/MARY GOPEE DWG

SCALE 1:500

Distances are in metres

