

Process ID# 44976

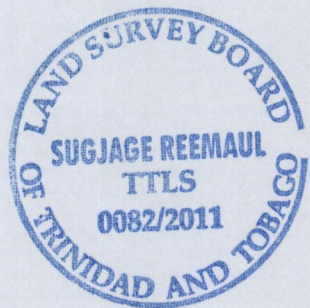
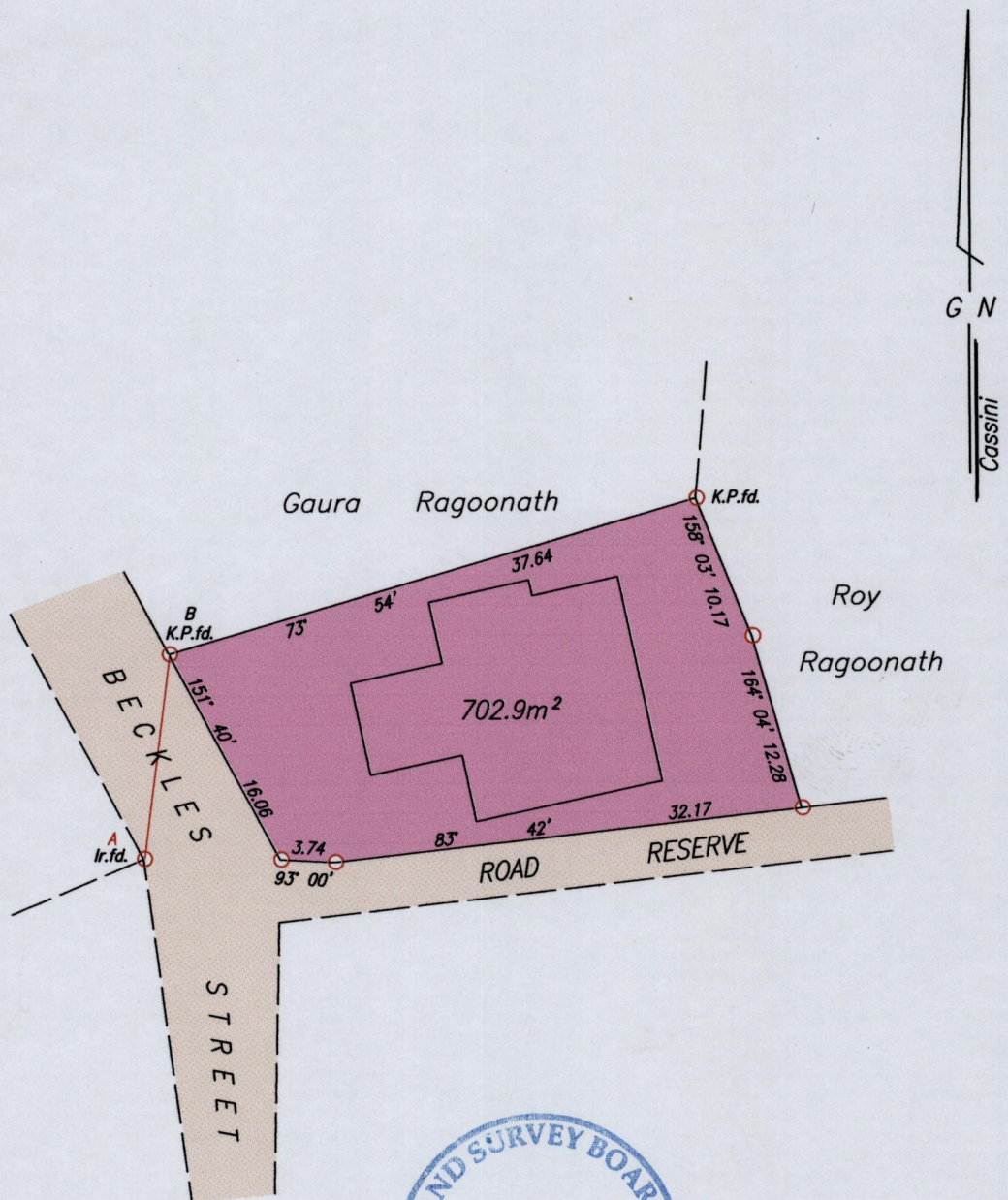
1548

92

Ward of Naparima

County of Victoria

Cadastral Sheet G.8.B. $\frac{63C}{1/a}$



At A

N	1132479	U.T.M.
E	0669729	

obtained from Hand-held
GPS receiver
(+ / - 5.0m.)



A-B 7° 08' 14.13

SCALE 1 / 500

Distances are in metres

- Denotes Iron put unless otherwise stated
- Bearings are Cassini Grid based on Solar Observations

Plan of a Parcel of land coloured pink in the Ward of Naparima
Containing seven hundred and two point nine square metres
Surveyed by me, with due authority, in October 2011 for Selvon Ballack.
In accordance with Regulation 25 (1) of the Land Surveyors' Regulations 1998,
I certify that this plan is correct.

..... *Sugjage Reemaul* T.T.L.S.

Entered on

..... 21st October 2011

30P