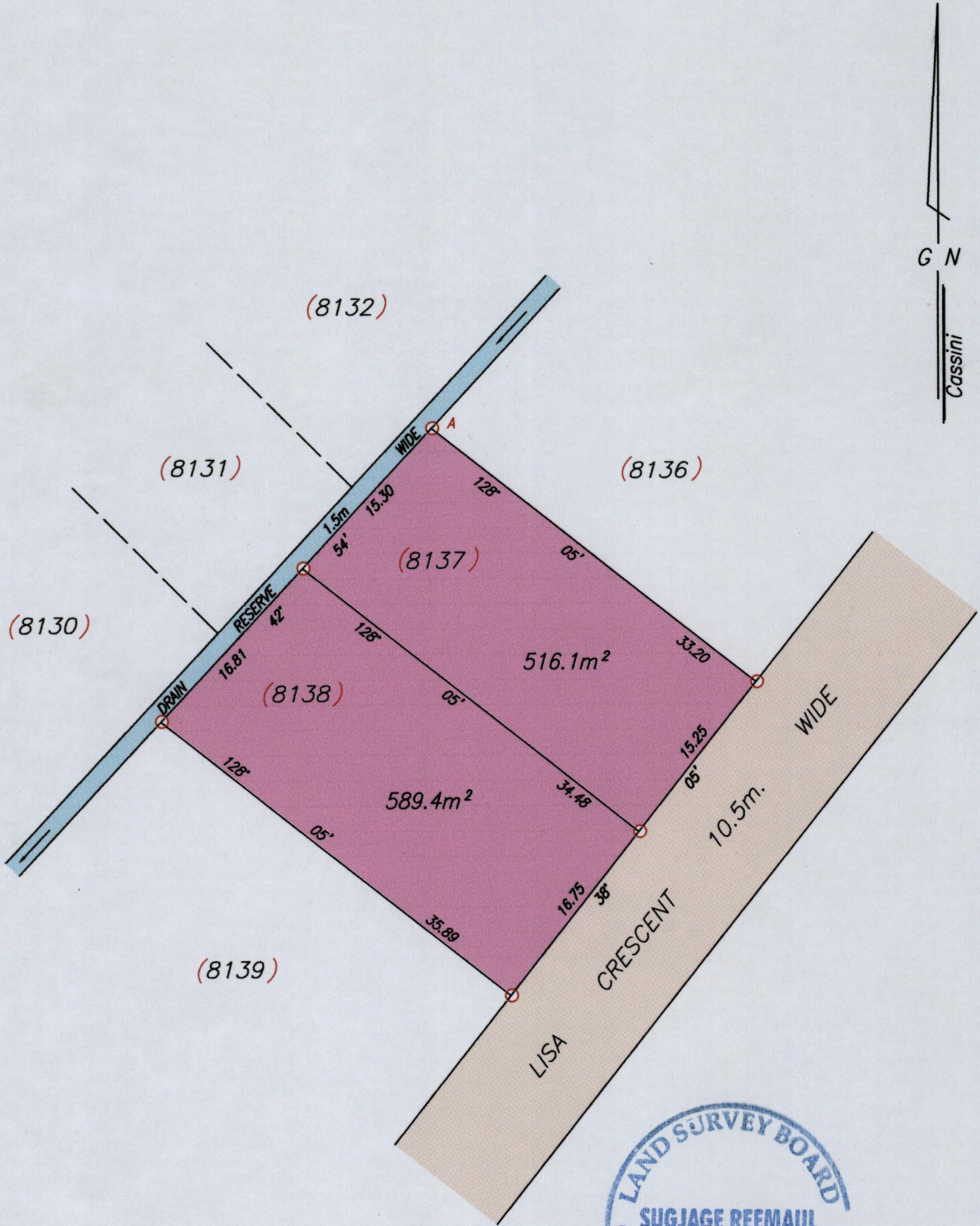


1548

91

Process ID# 44975

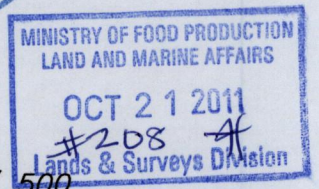
Ward of Naparima
County of Victoria
Cadastral Sheet G.8.E. $\frac{63B}{2/b}$



At A

N	1132436	U.T.M.
E	0667835	

obtained from Hand-held
GPS receiver
(+ / - 5.0m.)



SCALE 1 / 500

Distances are in metres

- Denotes Iron found unless otherwise stated
- Bearings are Cassini Grid based on Solar Observations

Plan of 2 Parcels of land coloured pink in the Ward of Naparima
Containing together one thousand one hundred and five point five square metres
Surveyed by me, with due authority, in October 2011 for Reynold Beharry.
In accordance with Regulation 25 (1) of the Land Surveyors' Regulations 1998,
I certify that this plan is correct.

.....Skeemaul..... T.T.L.S.

Entered on

.....21st October..... 2011

468