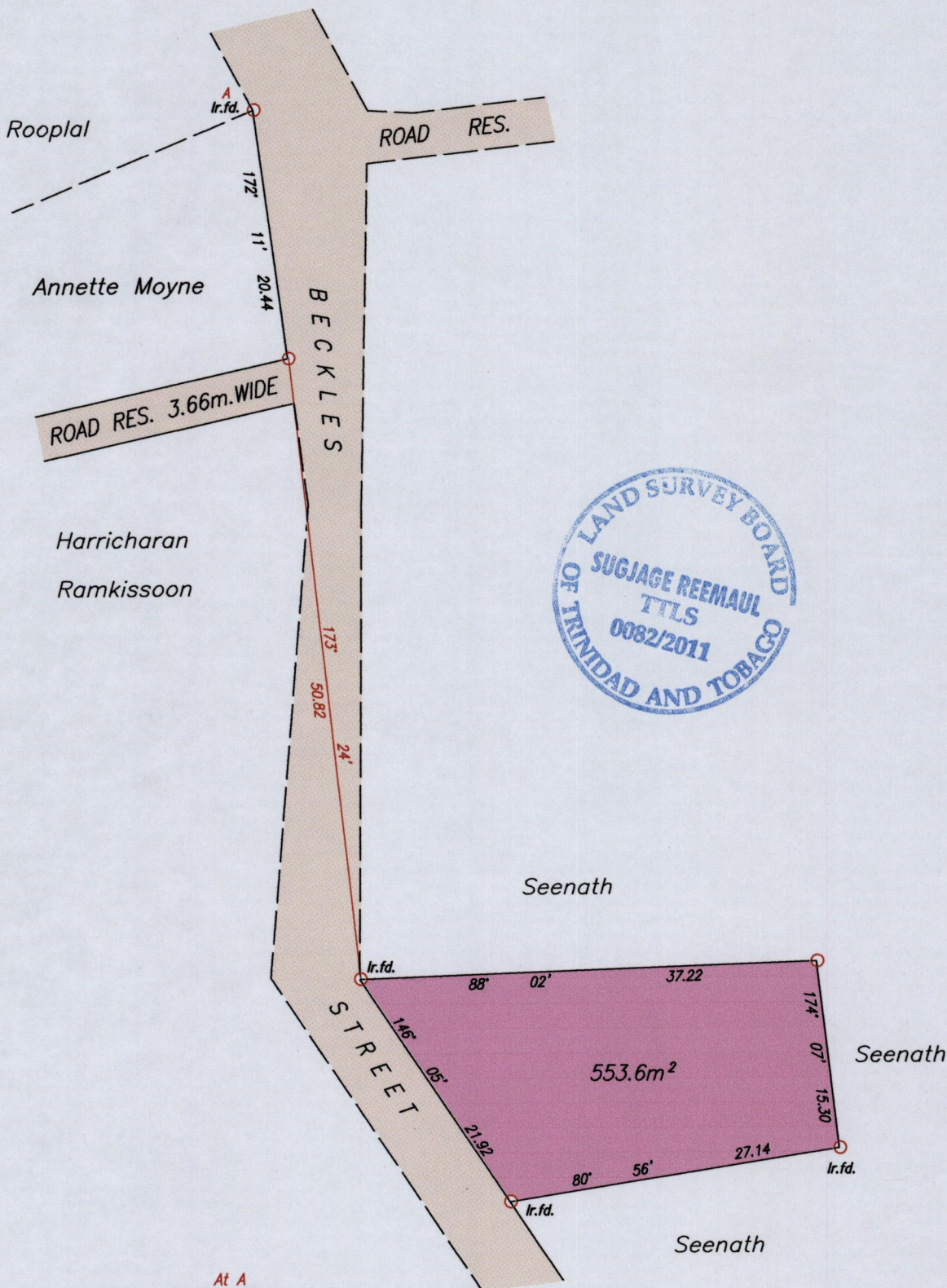


1548

90

Process ID# 44974

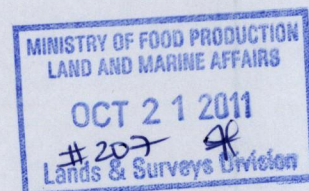
Ward of Naparima  
County of Victoria  
Cadastral Sheet G.8.B.  $\frac{63C}{1/a}$



At A

N	1132479	U.T.M.
E	0669729	

obtained from Hand-held  
GPS receiver  
( + / - 5.0m. )



See Tab 109

SCALE 1 / 500  
Distances are in metres

- Denotes Iron put unless otherwise stated
- Bearings are Cassini Grid based on Solar Observations

Plan of a Parcel of land coloured pink in the Ward of Naparima  
Containing five hundred and fifty-three point six square metres  
Surveyed by me, with due authority, in October 2011 for P. Goonai.  
In accordance with Regulation 25 (1) of the Land Surveyors' Regulations 1998,  
I certify that this plan is correct.

.....*Sheemal*..... T.T.L.S.  
.....*21<sup>st</sup> Oct 2011*..... 2011

Entered on .....

338