

Process Jdt 44470

1548

83

Cadastral Sheet $\frac{63C}{1/a/4}$ (G.8.B.)

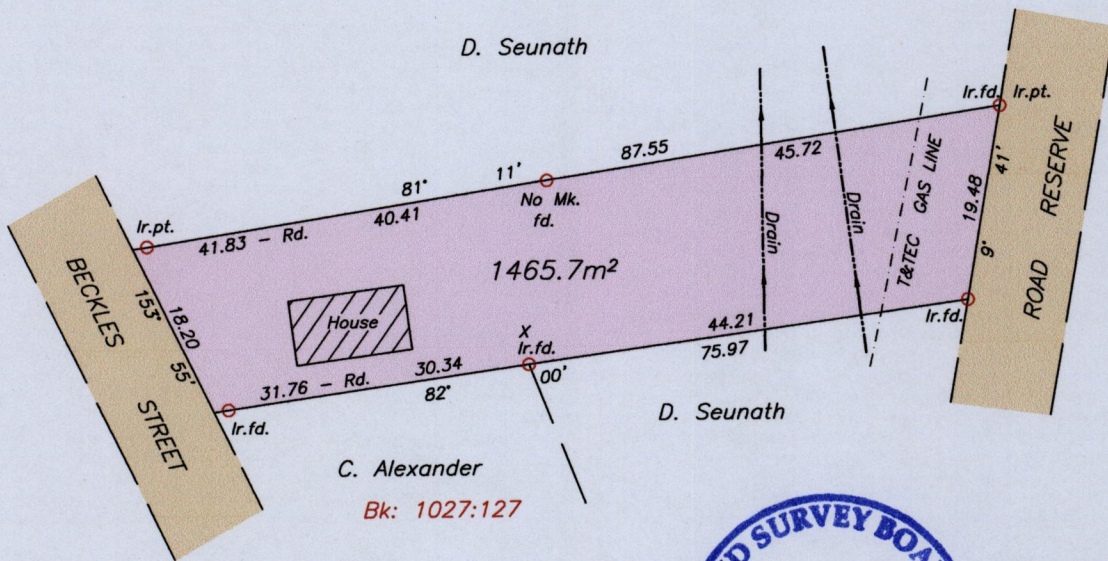
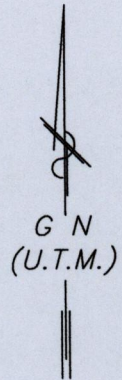
Ward of Naparima

County of Victoria

References:

RD #11796 of 1975

Bk: 1116:116



X = N 1132387 +/- 5.0m
E 669760

UTM 20 Naparima 55
Hand Held GPS

SCALE 1:750
Distances are in METRES

Bearings are UTM Grid based on Solar observations

PLAN of a Parcel of land coloured pink in the Ward of Naparima
Containing one thousand four hundred and sixty five point seven square metres.
Surveyed by me, with due authority, in August 2011 for Molly Jaggasssar
In accordance with Regulation 25 (1) of the Land Surveyors' Regulations 1998,
I certify that this Plan is correct.

Andre Felix T.T.L.S.

Entered on

Trinidad & Tobago 17th October, 2011
Land Surveyor

