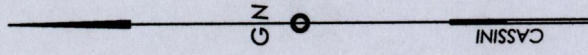


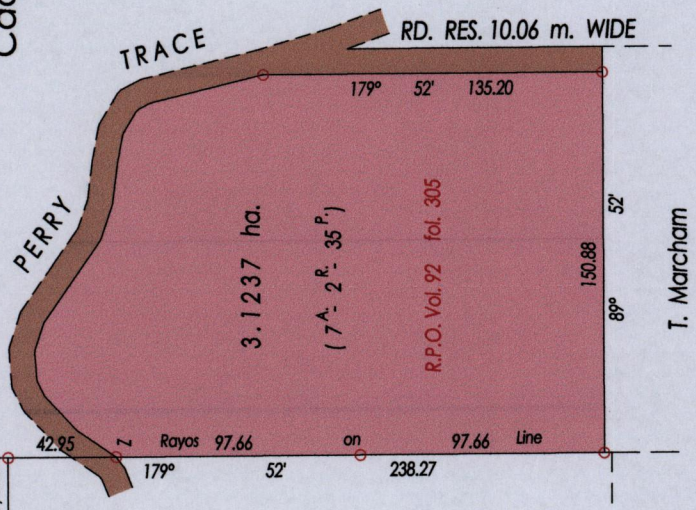
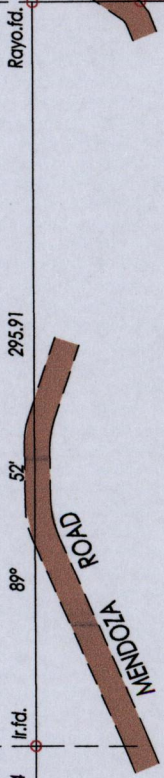
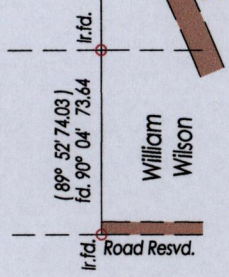
Ward of Ortoire
County of Victoria
Cadastral Sheet H. 1 A. 54 C.
4/d



Z = N. 1139107 E. 490540
U.T.M. Zone 20 Naporima +/- 5.00 m.
Hand Held G.P.S.

REDEFINITION SURVEY

Plan J. C. 96



William Wilson

Bk. 330 fol. 189

Process ID 44301



○ Denotes Iron Put Except Stated Otherwise

SCALE 1 : 3000

Bk. 327 fol. 247

Bearings are Cassini Grid based on Solar Observations Distances are in Metres
PLAN of a Parcel of land coloured pink in the Ward of Ortoire
Containing three point one two three seven hectares
Re-defined by me, with due authority in, Sept. 2011 for D. Naranjitt
In accordance with Regulation 25 (1) of the Land Surveyors' Regulations 1998,
I certify that this plan is correct.

Hollis J. Eversley

Trinidad & Tobago Land Surveyor

