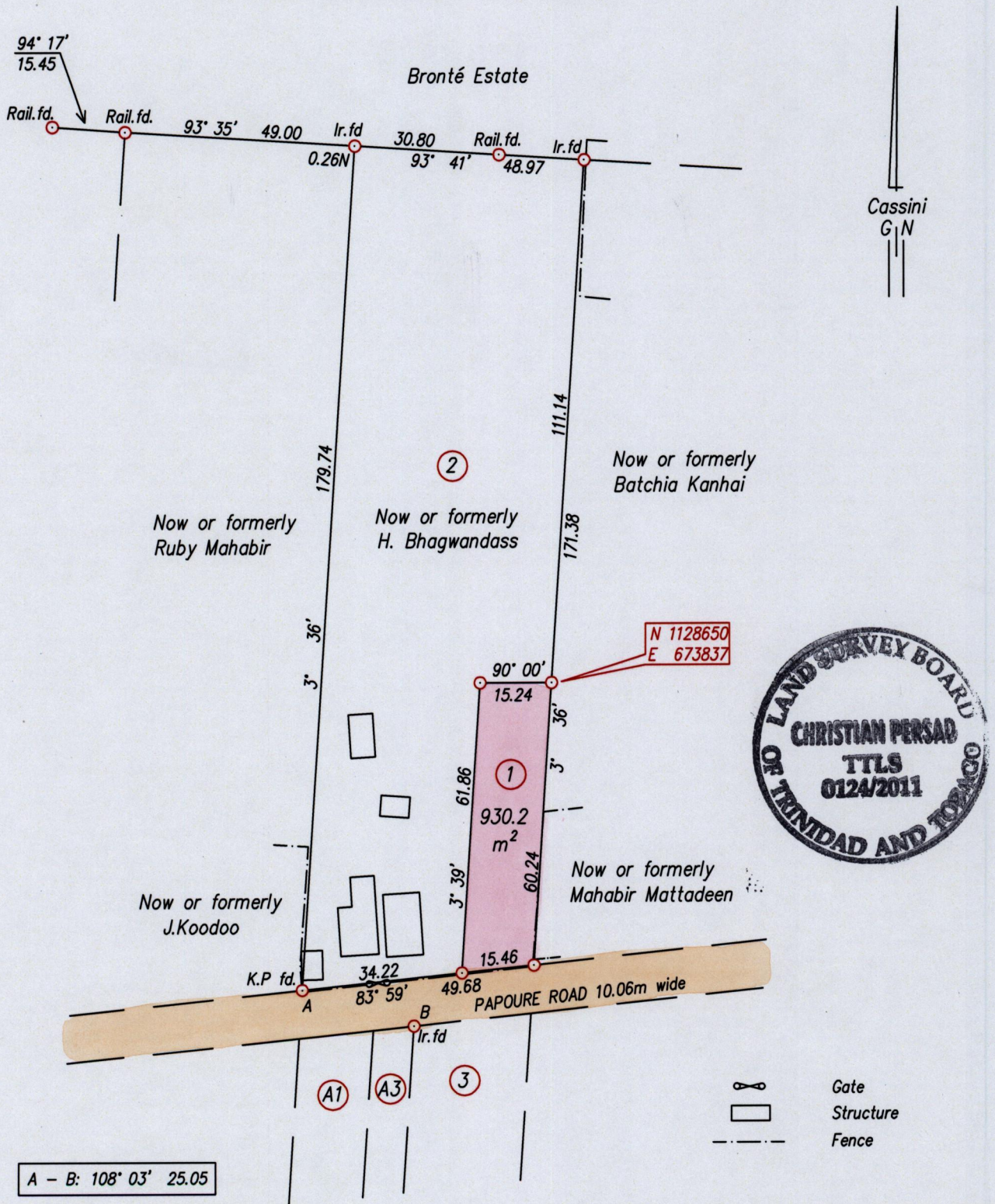


References
Bk.954 fol.36
Bk.995 fol.13
Bk.1088 fol.133

Cadastral Sheet $\frac{63C}{4/d}$ (G.8.P)
Ward of Naparima
County of Victoria

LP# 229, Papoure Road, Lower Barrackpore



○ Denotes Iron put except where stated otherwise
Bearings are Cassini Grid based on GPS Observations
Co-ordinates are Naparima/UTM, derived from Digital Mapping

SCALE 1:1250
Distances are in metres

PLAN of a parcel of land coloured pink in the Ward of Naparima
Containing nine hundred and thirty point two square metres
Surveyed by me, with due authority, in May 2009 at the request of Prema Seenath
In accordance with Regulation 25 (1) of the Land Surveyors Regulations 1998, I certify that this plan is correct

MINISTRY OF FOOD PRODUCTION
LAND AND MARINE AFFAIRS
OCT 11 2011
Lands & Surveys Division

Checked by

..... Christian Persad

Entered on

Trinidad & Tobago Land Surveyor. 10/10/ 2011.