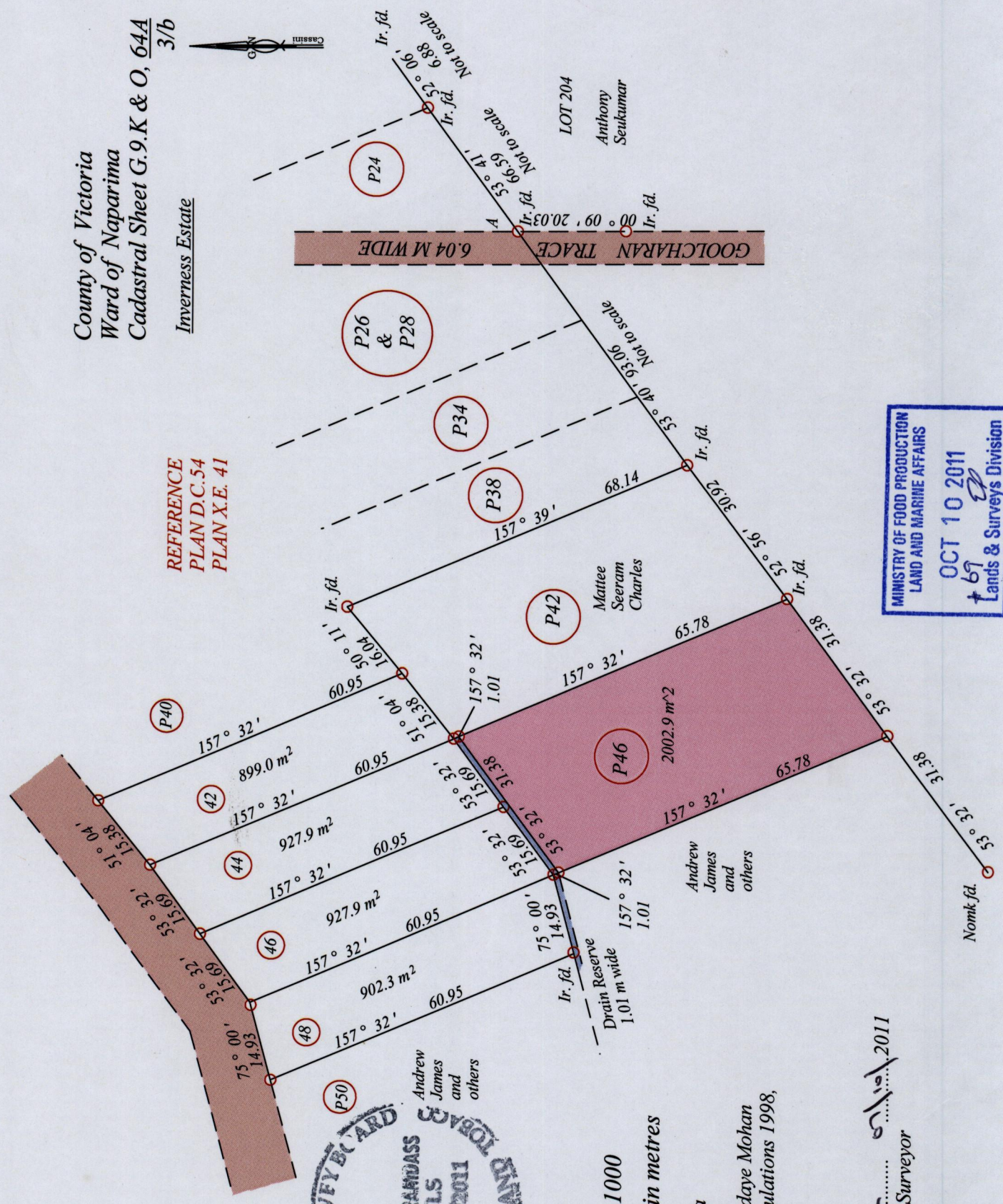


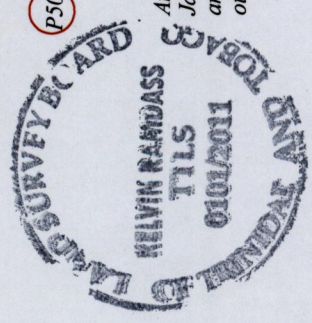
Process ID# 44281

County of Victoria
Ward of Naparima
Cadastral Sheet G.9.K & O, 64A
Inverness Estate 3/b

REFERENCE
PLAN D.C.54
PLAN X.E. 41



MINISTRY OF FOOD PRODUCTION
LAND AND MARINE AFFAIRS
OCT 10 2011
Lands & Surveys Division



Coordinates are in WGS84, UTM Zone 20 +/- 5m
At. A- 677084 mE, 1130614 mN

SCALE : 1:1000

Distances are in metres

Bearings are Cassini Grid based on solar observations
○ Denotes Iron put unless otherwise stated

Plan of a parcel of land coloured PINK in the Ward of Naparima
Containing Two thousand and two point nine square metres
Surveyed by me, with due authority, in September 2011 for Ramdaye Mohan
In accordance with Regulation 25(1) of the Land Surveyors' Regulations 1998,
I certify that this plan is correct.

Checked by
Entered on
Trinidad and Tobago Land Surveyor