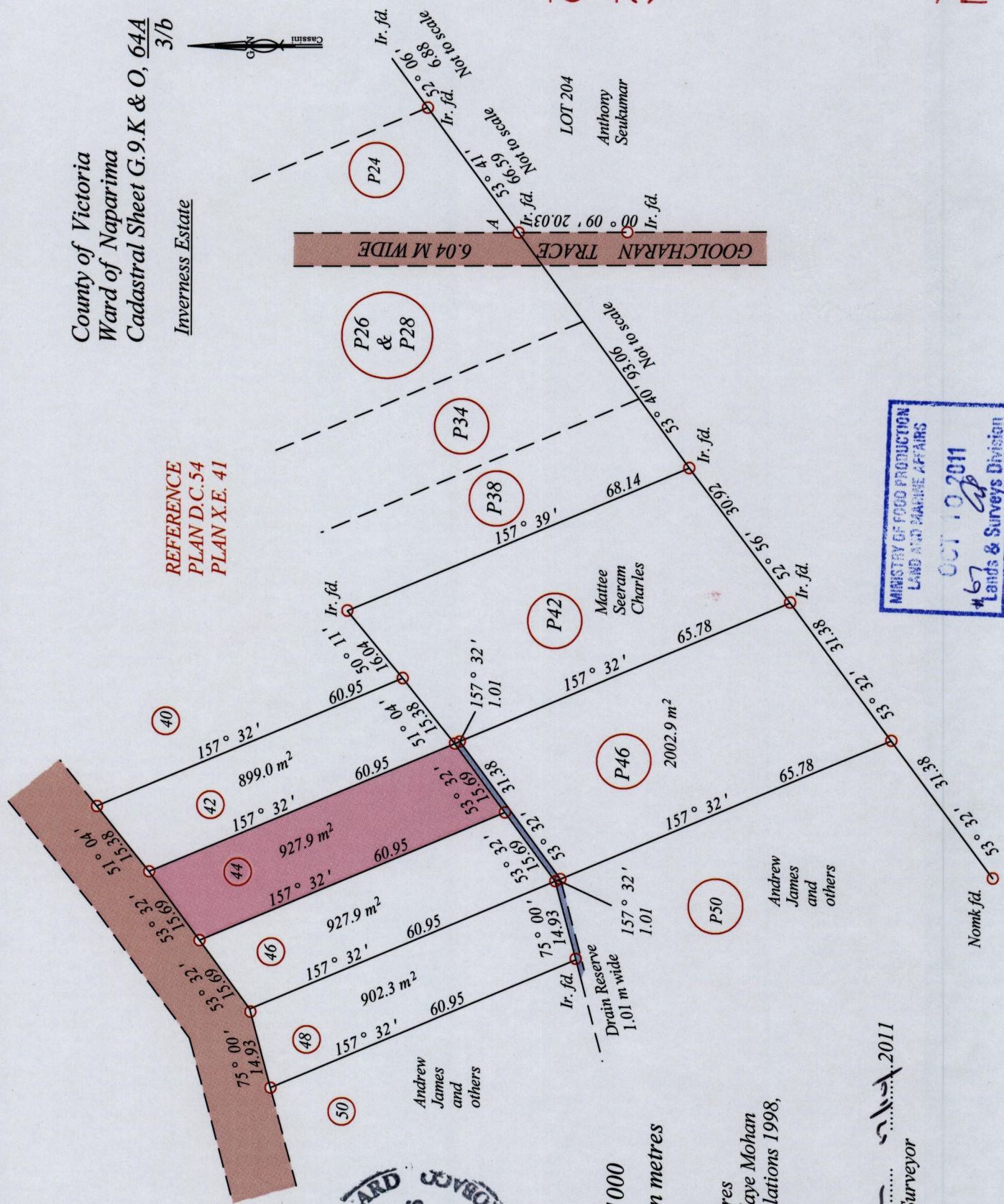


Process ID#44208

County of Victoria  
Ward of Naparima  
Cadastral Sheet G.9.K & O, 64A  
3/b  
Inverness Estate

REFERENCE  
PLAN D.C.54  
PLAN X.E. 41



MINISTRY OF FOOD PRODUCTION  
LAND AND MARINE AFFAIRS  
OCT 10 2011  
#67  
Lands & Surveys Division



Coordinates are in WGS84, UTM Zone 20 +/- 5m  
At. A- 677084 mE, 1130614 mN

SCALE : 1:1000

Distances are in metres

Bearings are Cassini Grid based on solar observations  
○ Denotes Iron put unless otherwise stated

Plan of a parcel of land coloured PINK in the Ward of Naparima  
Containing Nine hundred and twenty seven point nine square metres  
Surveyed by me, with due authority, in September 2011 for Ramdaye Mohan  
In accordance with Regulation 25(1) of the Land Surveyors' Regulations 1998,  
I certify that this plan is correct.

Checked by .....  
Entered on .....  
Kevin Ramdass  
Trinidad and Tobago Land Surveyor

Checked by .....  
Entered on .....