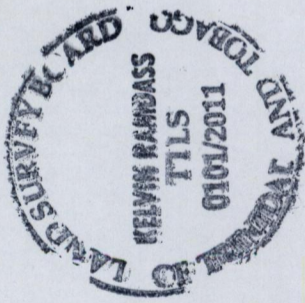
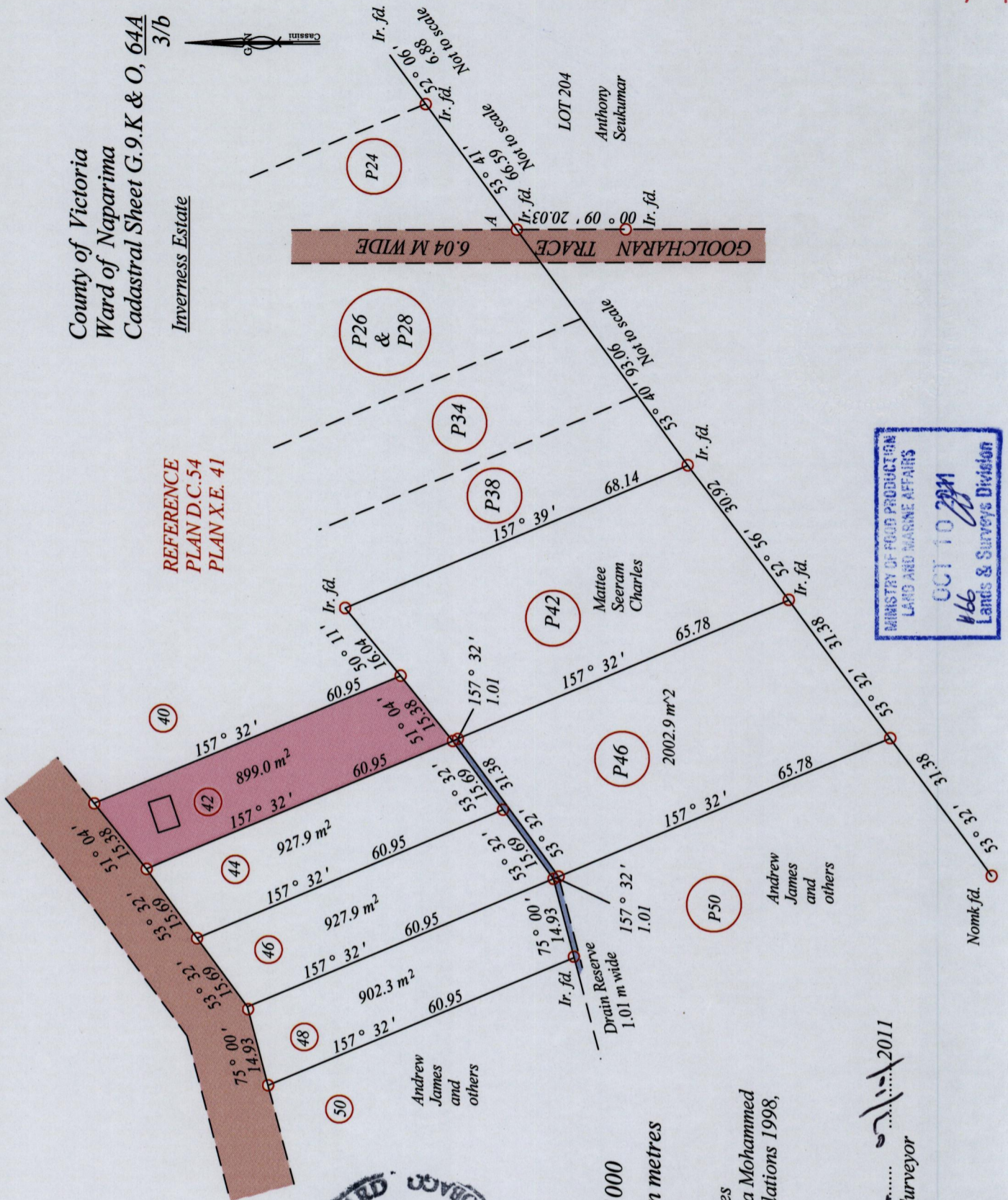


Process ID # 44213

County of Victoria
Ward of Naparima
Cadastral Sheet G.9.K & O, 644
3/b
Inverness Estate

REFERENCE
PLAN D.C.54
PLAN X.E. 41



Coordinates are in WGS84, UTM Zone 20 +/- 5m
At. A- 677084 mE, 1130614 mN

SCALE : 1 : 1000

Distances are in metres

Bearings are Cassini Grid based on solar observations
○ Denotes Iron put unless otherwise stated

Plan of a parcel of land coloured PINK in the Ward of Naparima
Containing Eight hundred and ninety nine point zero square metres
Surveyed by me, with due authority, in September 2011 for Radica Mohammed
In accordance with Regulation 25(1) of the Land Surveyors' Regulations 1998,
I certify that this plan is correct.

Checked by
Entered on
Melvin Ramdass
Trinidad and Tobago Land Surveyor



1548

71