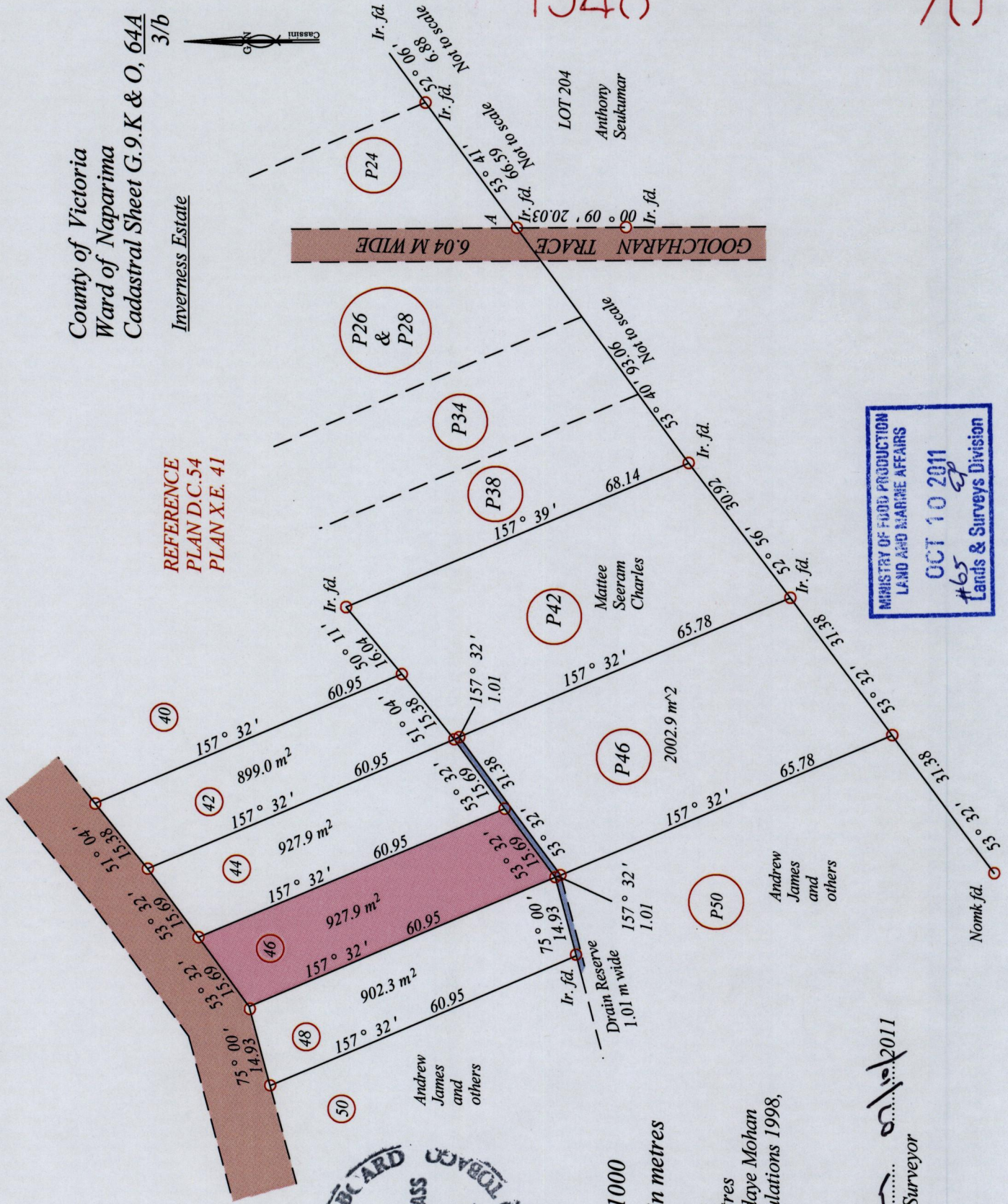


Process ID# 44215

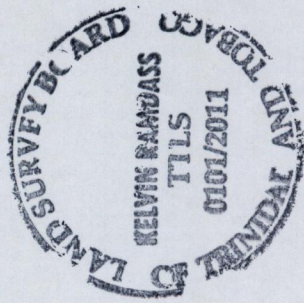
County of Victoria
Ward of Naparima
Cadastral Sheet G.9.K & O, 64A
Inverness Estate
3/b

REFERENCE
PLAN D.C.54
PLAN X.E. 41



1548

70



Coordinates are in WGS84, UTM Zone 20 +/- 5m
At. A- 677084 mE, 1130614 mN

SCALE : 1:1000

Bearings are Cassini Grid based on solar observations
Distances are in metres
○ Denotes Iron put unless otherwise stated

Plan of a parcel of land coloured PINK in the Ward of Naparima
Containing Nine hundred and twenty seven point nine square metres
Surveyed by me, with due authority, in September 2011 for Ramdaye Mohan
In accordance with Regulation 25(1) of the Land Surveyors' Regulations 1998,
I certify that this plan is correct.

Kevin Rammo
Trinidad and Tobago Land Surveyor

MINISTRY OF FOOD PRODUCTION
LAND AND MARINE AFFAIRS
OCT 10 2011
#65
Lands & Surveys Division

Checked by
Entered on