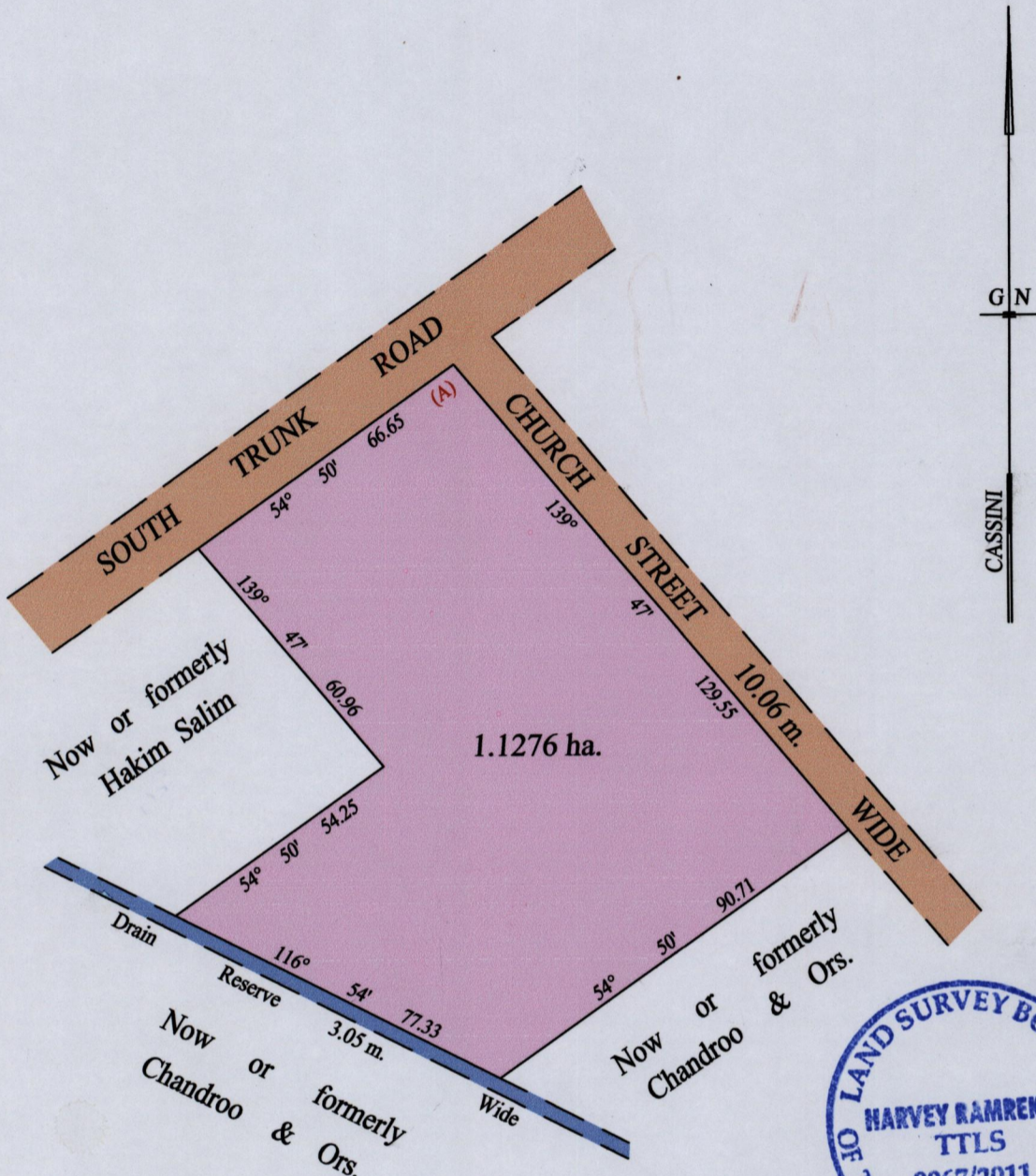


1548

66

Process ID# 43938

Ward of Naparima
County of Victoria
Cadastral Sheet (G.7.C) 63.B.
1/b



At Station (A)
E 0665442
N 1133074
Reading taken with
Handheld G.P.S.
U.T.M. Zone 20
Naparima
± 5 m.

Vide Bk. 1134 fol. 17

SCALE : 1:1500

Note: Bearings are cassini grid based on solar observations Distances are in metres
 PLAN of a Parcel of land coloured pink in the Ward of Naparima
 Containing one point one two seven six hectare
 Prepared by me, with due authority, in September 2011 for Mr. R. Gopeesingh
 In accordance with Regulation 25 (1) of the Land Surveyors' Regulations 1998,
 I certify that this plan is correct.

Checked by *[Signature]*

Entered on Trinidad & Tobago Land Surveyor 29.09.2011

