

1548

63

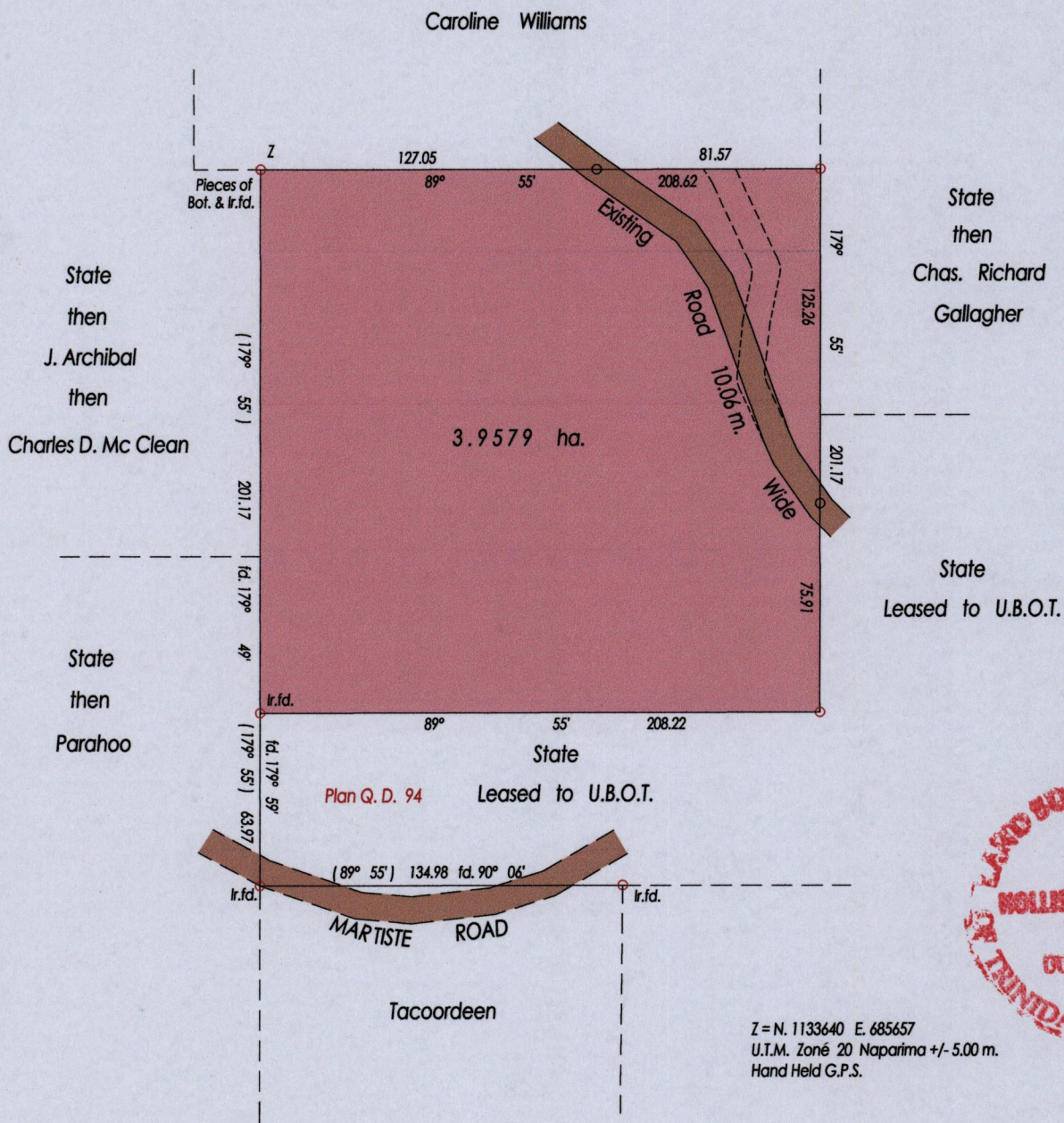
Process ID# 45890

Ward of Ortoire
County of Victoria

R.P.O. Vol. 17 fol. 166

Cadastral Sheet (G. 10 C.) $\frac{54 F.}{3/c}$

REDEFINITION SURVEY



Z = N. 1133640 E. 685657
U.T.M. Zone 20 Naparima +/- 5.00 m.
Hand Held G.P.S.

Plan in Box file 1145 fol. 688

SCALE 1 : 2500

○ Denotes Iron Put Except Stated Otherwise

Bearings are Cassini Grid based on Solar Observations Distances are in Metres
PLAN of a Parcel of land coloured pink in the Ward of Ortoire
Containing three point nine five seven nine sq. metres
Re-defined by me, with due authority in, June 2011 at the request of J. Jankie
In accordance with Regulation 25 (1) of the Land Surveyors' Regulations 1998,
I certify that this plan is correct.

[Signature]
19th September 2011

Entered on..... Trinidad & Tobago Land Surveyor

