

1548

62

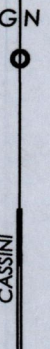
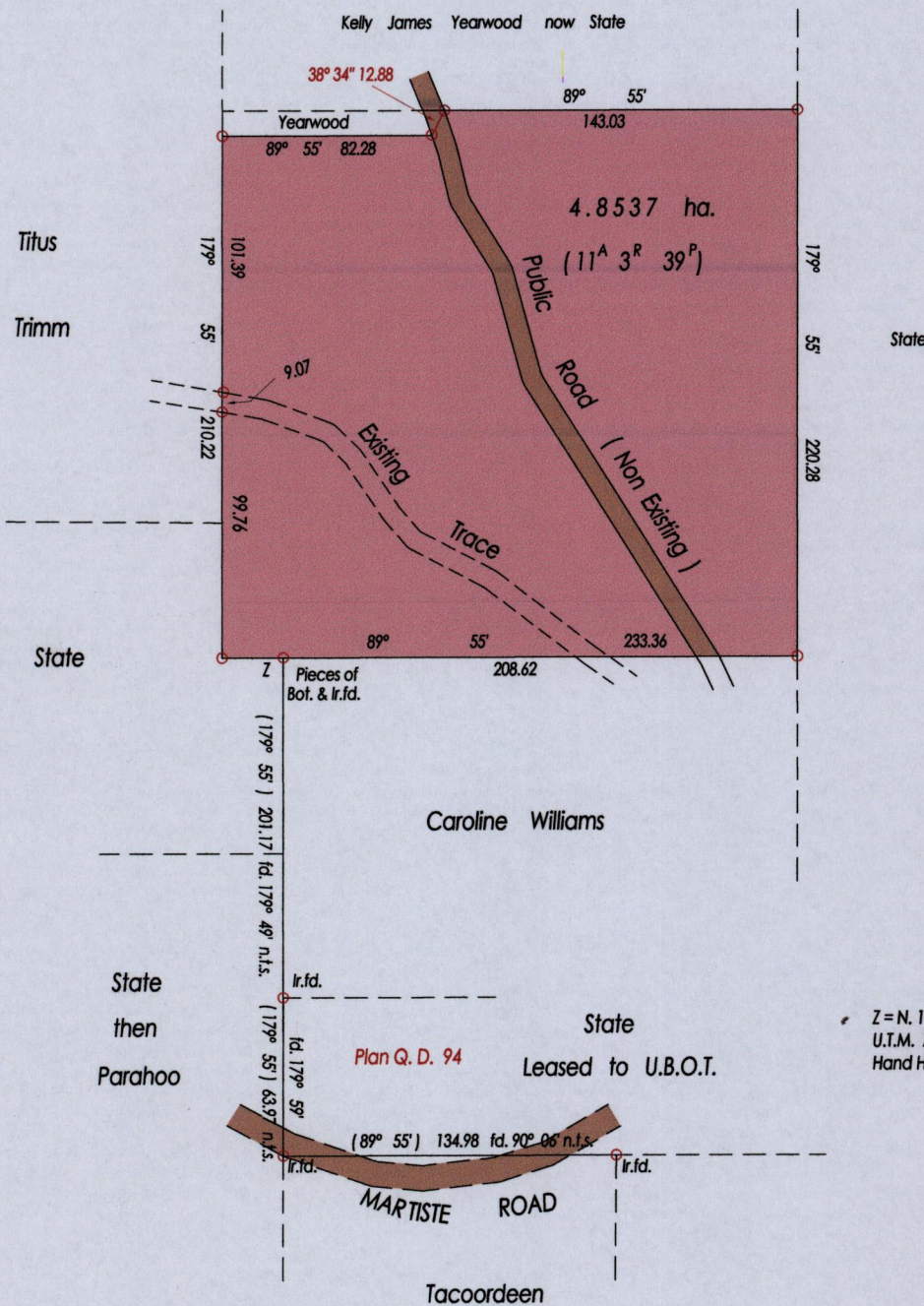
Process ID # 43859

Ward of Ortoire  
County of Victoria

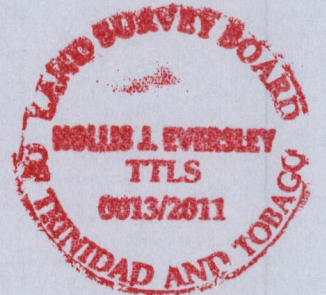
R.P.O. Vol. 11 fol. 613

Cadastral Sheet ( G. 10 C. ) 54 F.  
3 / c

REDEFINITION SURVEY



Z = N. 1133640 E. 685657  
 U.T.M. Zone 20 Naparima +/- 5.00 m.  
 Hand Held G.P.S.



○ Denotes Iron Put Except Stated Otherwise

SCALE 1 : 3000

Bearings are Cassini Grid based on Solar Observations Distances are in Metres  
 PLAN of a Parcel of land coloured pink in the Ward of Ortoire  
 Containing four point eight five three seven hectares  
 Re-defined by me, with due authority in, June 2011 at the request of J. Jankie  
 In accordance with Regulation 25 (1) of the Land Surveyors' Regulations 1998,  
 I certify that this plan is correct.

*[Handwritten Signature]*

Entered on..... Trinidad & Tobago Land Surveyor .. 19. September .. 2011

