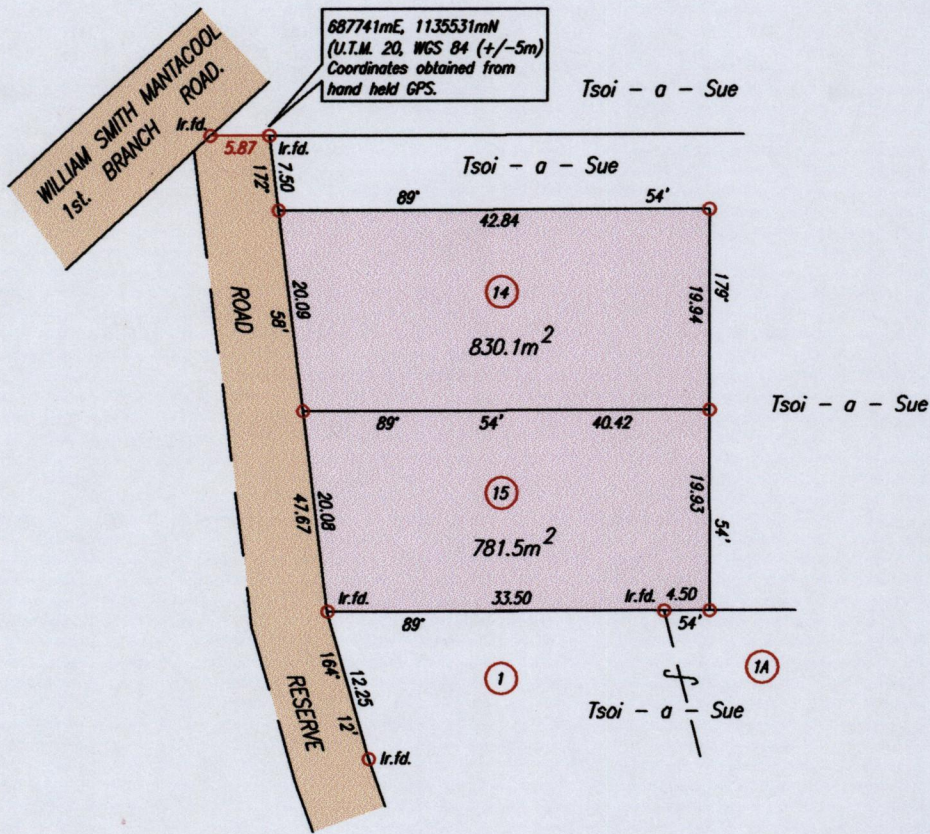


Ref.: Reg. Deed No. 2390/1966 Amended Plan
 Ref.: Bk. 325 fol. 90

15483
 Cadastral Sheet G.5.P. 54F
 Ward of Ortoire 3/b
 County of Victoria
 George Village,
Tableland.

Process ID#43887



SCALE 1:750
 Distances are in Metres

○ Denotes Iron put except otherwise stated.

Bearings are Cassini Grid based on Solar Observations.

Plan of 2 Parcels of land coloured pink in the Ward of Ortoire

Containing together zero point one six one two hectares.

Surveyed by me, with due authority, in November, 2009 for M. Tsoi - a - Sue.

In accordance with Regulation 25(1) of the Land Surveyors' Regulations 1998,

I certify that this plan is correct.

Winston Ramcharan

Entered on Trinidad & Tobago Land Surveyor 27th September 2011

