

1548

6

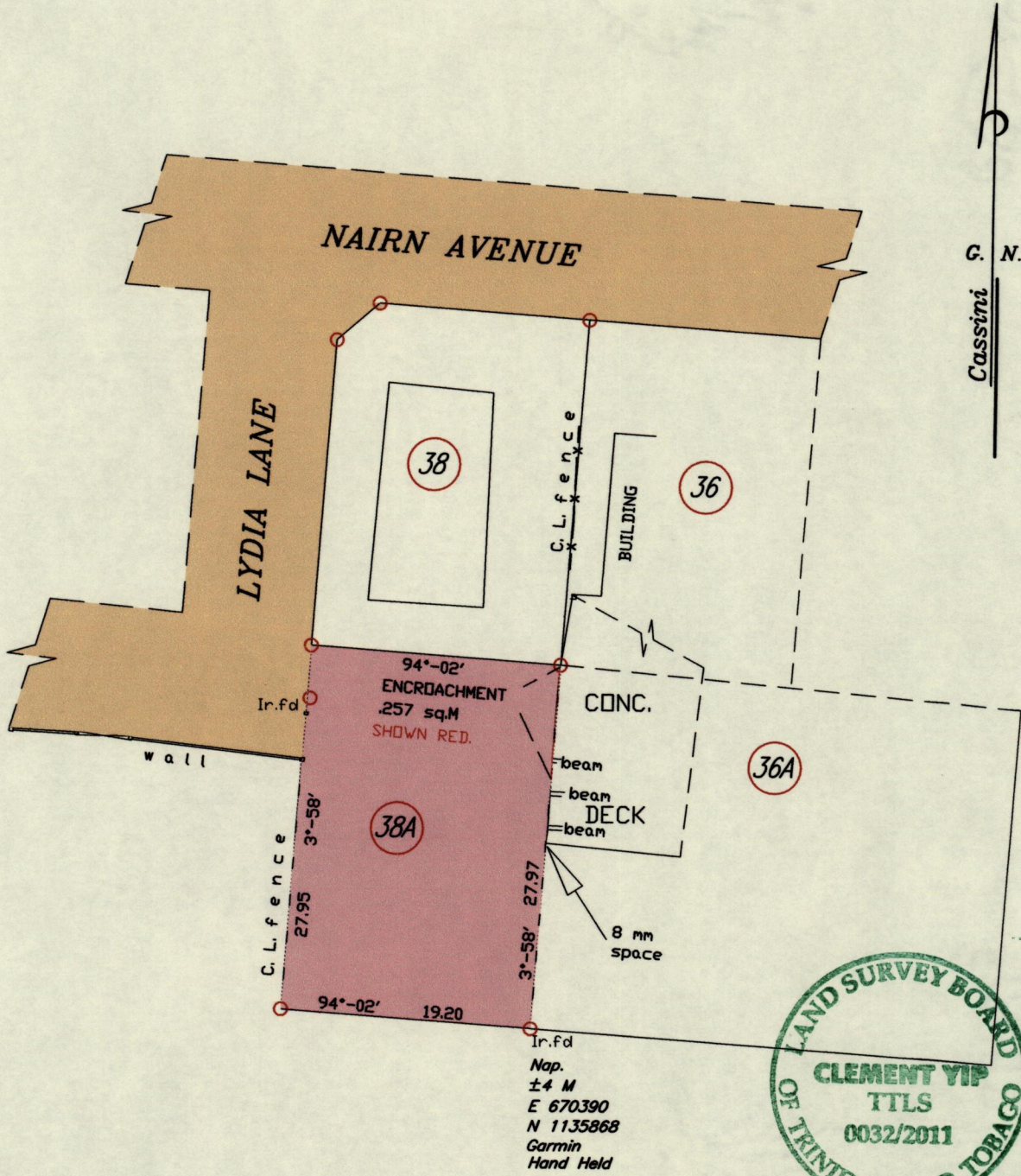
U.P.R.N. . . . .

R.D. 15323/1988

Process ID #42177

Ward of Naparima  
County of Victoria  
Cadastral Sheet G3.

53.F.  
3/b/1



Scale: 1/500

○ Denotes Ir. pt. unless stated otherwise. Bearings are based on Solar Observations. Distances are in Metres.

Plan of a parcel of land coloured pink in the Ward of Naparima [Lot 38A].  
Showing encroachment by Concrete Decking of Mr. Nagib & Fariah Ali, [36 & 36A].  
Amounting to point two five seven sq. metres.

Surveyed by me with due authority in June 2011, for Afrose Hosein.

In accordance with Regulation 25[1] of the Land Surveyors Regulations 1998,  
I certify that this plan is correct.

Entered .....  
Checked .....  
2011

*Clement Yip*  
Trinidad & Tobago Land Surveyor, 9/9/2011

MINISTRY OF AGRICULTURE  
Survey & Mapping Division  
#300  
JUL 29 2011  
LANDS & MARINE RESOURCES