

Process ID# 43874

R.D. 6882/1988

1548

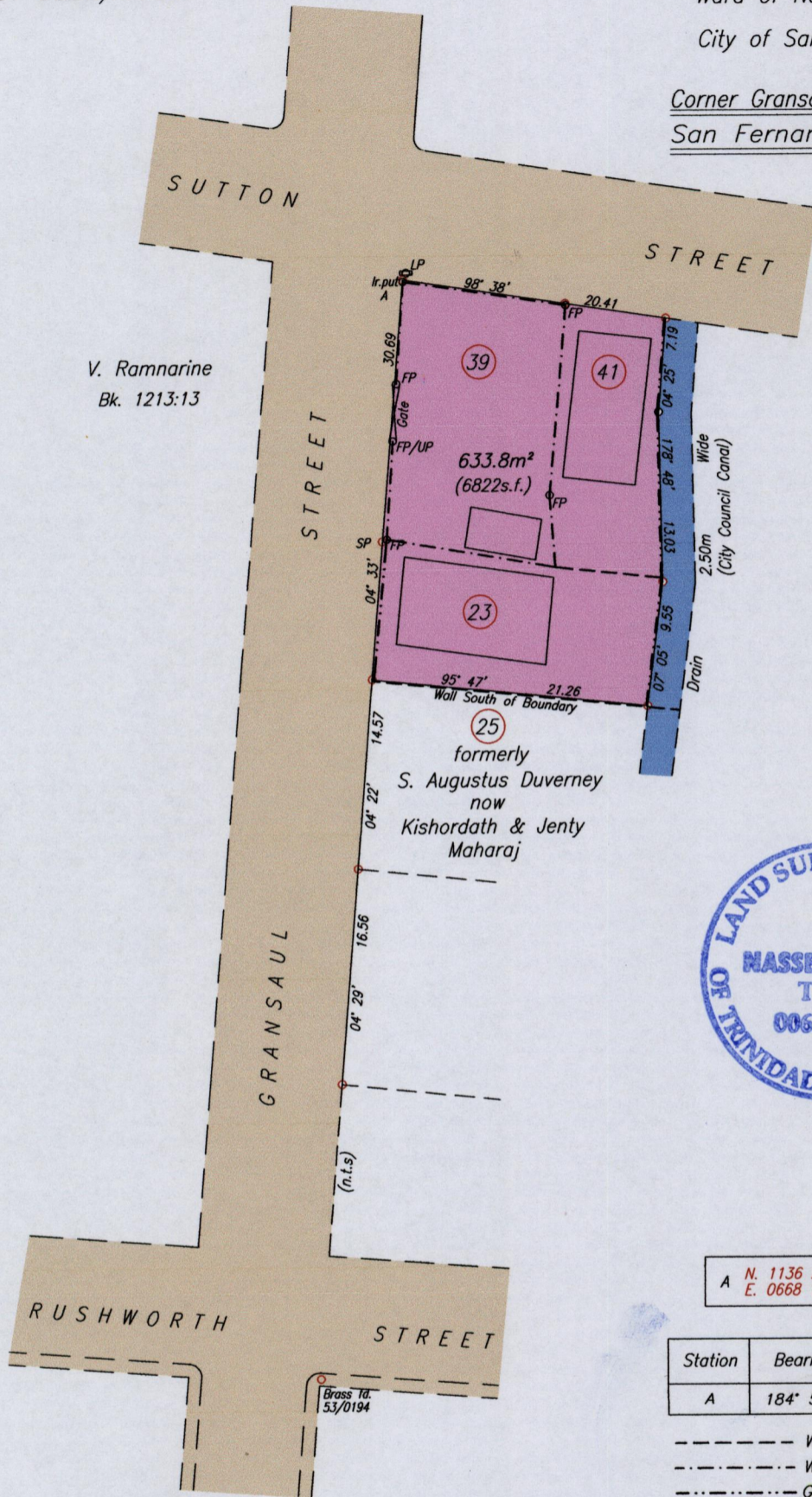
57

Cadastral Sheet G.3.1. 53E
NE 4/b

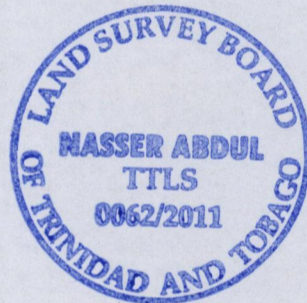
Ward of Naparima

City of San Fernando

Corner Gransaul & Sutton Street,
San Fernando



V. Ramnarine
Bk. 1213:13



A N. 1136 239 Hand Held GPS +/- 5m
E. 0668 193 UTM proj. Nap 1955

Station	Bearing	Distance	Station
A	184° 58'	192.62 (n.t.s)	Brass

- Wall
- - - - - Wire Fence
- . - . - Galvanize Fence

SCALE 1/500

Distances are in metres

o Denotes Iron Found unless otherwise stated

Bearings are Cassini Grid based on Solar Observations

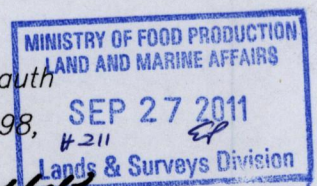
Plan of a Parcel of land coloured pink in the City of San Fernando

Containing six three three point eight square metres

Surveyed by me, with due authority, in September 2011 for Michael Jaggernaut

In accordance with Regulation 25 (1) of the Land Surveyors' Regulations 1998,

I certify that this plan is correct.



Nasser Abdul
26th September

Entered On.....

Trinidad & Tobago Land Surveyor.....2011