

Process ID#43796

Plan in R.D. 693/1964

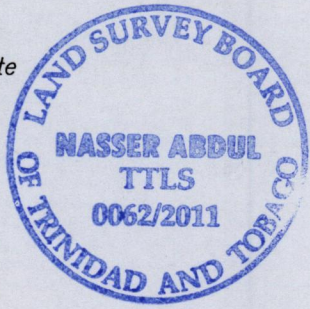
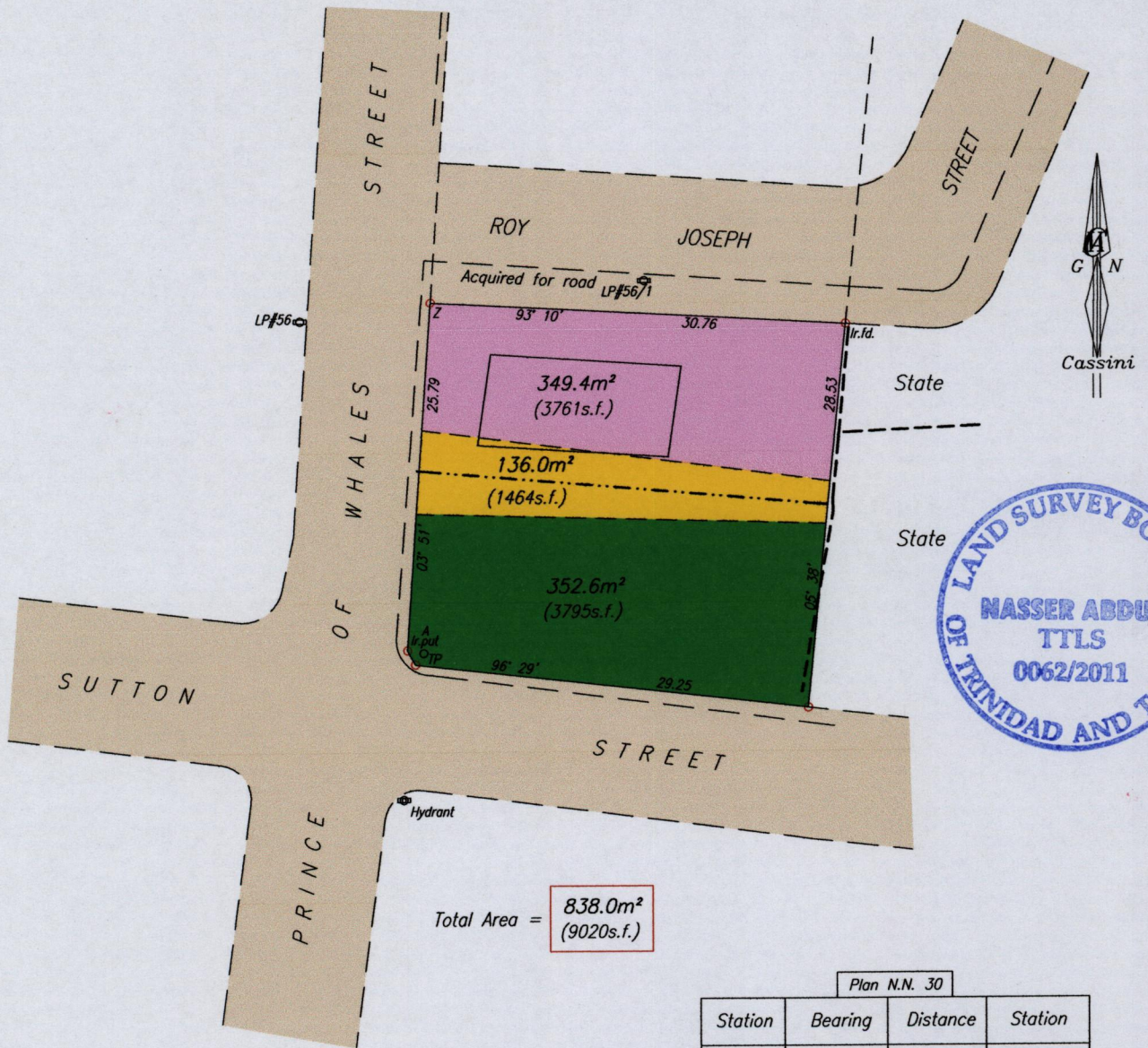
1548

56

Cadastral Sheet $\frac{G.3.1}{NE} \frac{53E}{4/b}$
Ward of Naparima
City of San Fernando

Corner Prince of Whales
& Sutton Street,
San Fernando

Pink (349.4m² 3761s.f.) was not acquired
Yellow (136.0m² 1464s.f.) Acquired from S. Jaggernauth
and re-conveyed to him
Green (352.6m² 3795s.f.) Acquired from S. Jaggernauth
and returned to him by way of lease



Total Area = 838.0m² (9020s.f.)

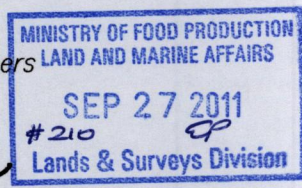
Station	Bearing	Distance	Station
Ir.put A	150° 50'	1.21	Nail Put
Ir.put A	181° 18'	11.05	Hydrant
Ir.put A	342° 03'	25.66	LP#56

--- Wall
- - - Galvanize Fence

SCALE 1/500
Distances are in metres

Z N. 1136 236 Hand Held GPS +/- 5m
E. 0660 401 UTM proj. Nap 1955

o Denotes Nail Put unless otherwise stated
Bearings are Cassini Grid based on Solar Observations
Plan of 3 Parcels of land coloured pink, yellow & green in the City of San Fernando
Containing together eight three eight point zero square metres
Surveyed by me, with due authority, in September 2011 for Marie Roze Ramsaroop & others
In accordance with Regulation 25 (1) of the Land Surveyors' Regulations 1998,
I certify that this plan is correct.



Nasser Abdul
26th September

Entered On.....
Trinidad & Tobago Land Surveyor.....2011