

Process ID# 43715

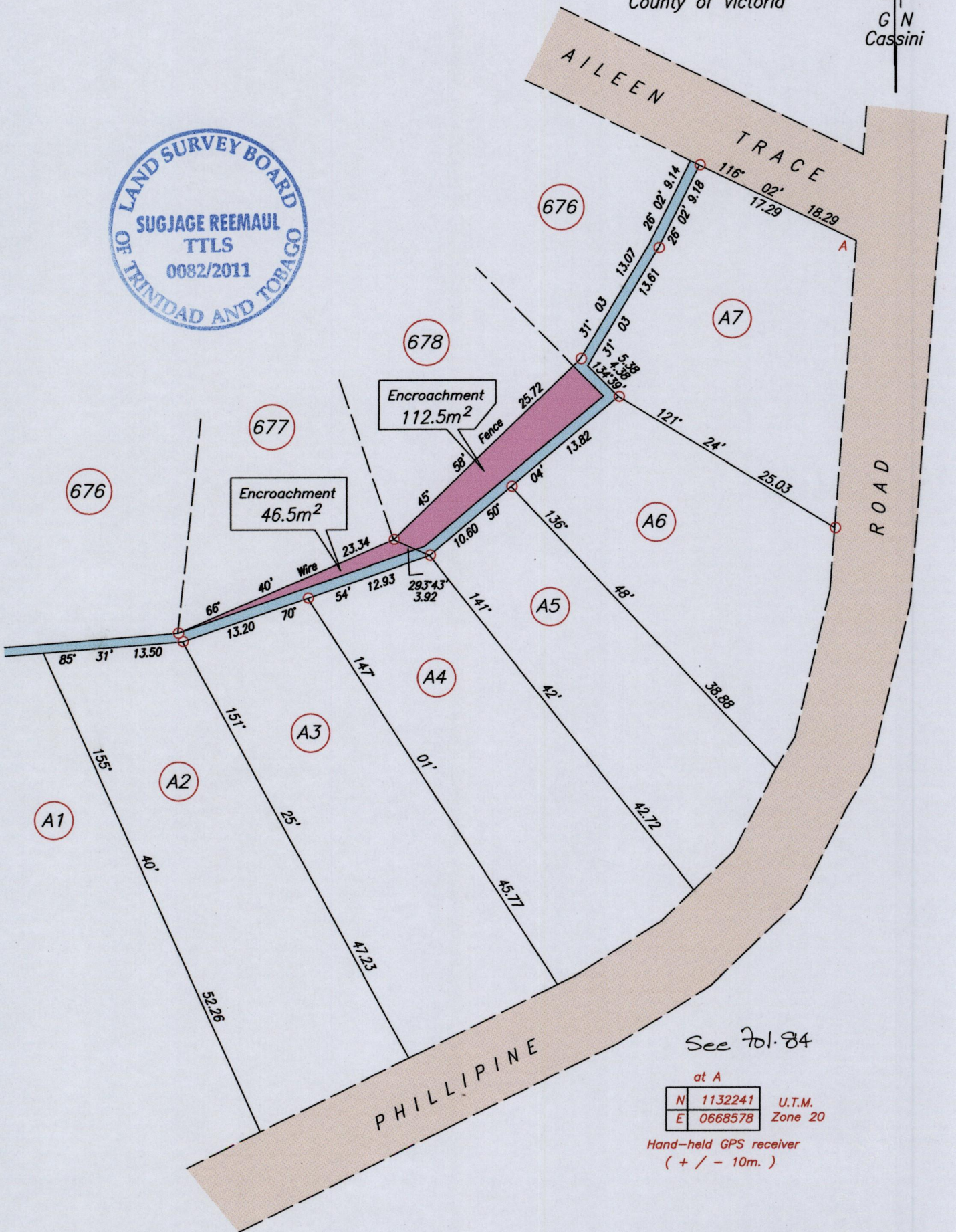
1548

55

"Palmiste"

Cadastral Sheet G.8.E. 63B
Ward of Naparima
County of Victoria

G N
Cassini



See 701.84

N	1132241	U.T.M.
E	0668578	Zone 20

Hand-held GPS receiver
(+ / - 10m.)

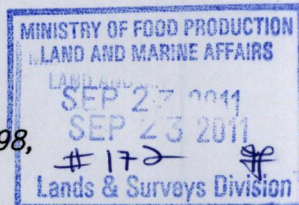
Drain Res. 1.00m. Wide

SCALE: 1/500

- Denotes Iron found unless otherwise stated
- Bearings are Cassini Grid based on Solar Observations

Distances are in metres

PLAN of 2 parcels of land coloured pink in the Ward of Naparima
Containing together one hundred and fifty-nine square metres
Surveyed with due authority, in September 2011 for Reynold Beharry.
In accordance with regulation 25 (1) of the Land Surveyors' Regulations 1998,
I certify that this plan is correct.



Sugjage Reemaul T.T.L.S.

23rd Sept, 2011

Entered on.....

36P#21P