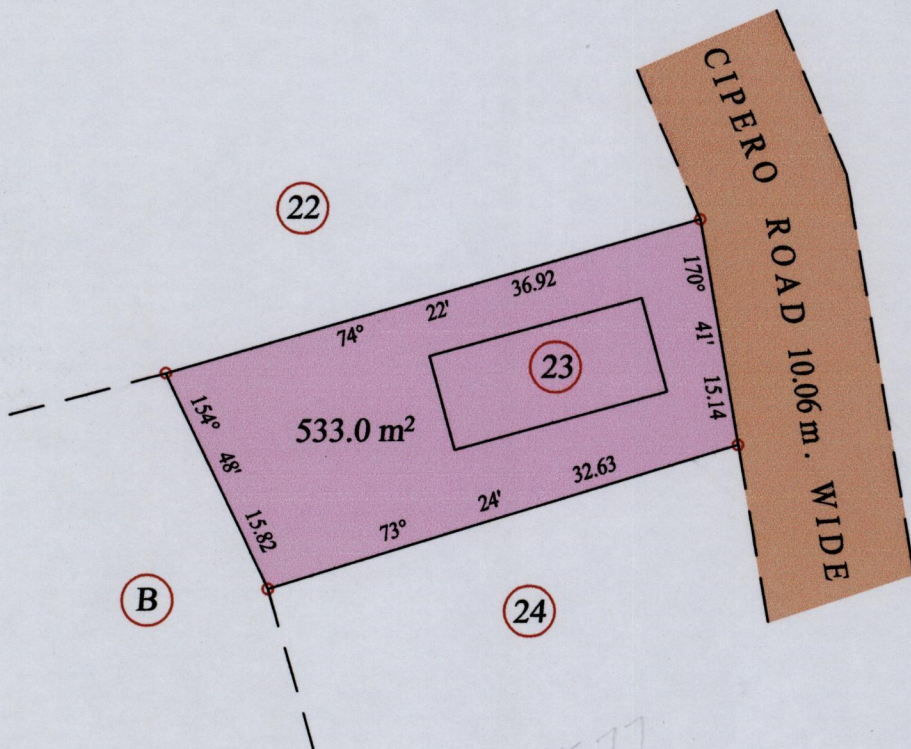


1548

54

Process IDA 143638

Ward of Naparima
County of Victoria
Cadastral Sheet (G.9.F) 64.A.
1/d



At Station (A)
E 0676179
N 1132098
Reading taken with
Handheld G.P.S.
U.T.M. Zone 20
Naparima
± 5 m.

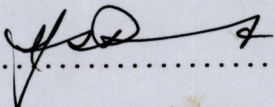
Vide Bk. 759 fol. 264

o Denotes Iron fd. except stated otherwise.

Note: Bearings are cassini grid based on solar observations

SCALE : 1:500
Distances are in metres

PLAN of a Parcel of land coloured pink in the Ward of Naparima
Containing five hundred and thirty three point zero square metres
Surveyed by me, with due authority, in August 2011 for Sherwin Ramnarine
In accordance with Regulation 25 (1) of the Land Surveyors' Regulations 1998,
I certify that this plan is correct.

Checked by 

Entered on Trinidad & Tobago Land Surveyor 9.09.2011

