

Process ID# 43374

RD:2010 002537 20D001

RD:2010 007064 40D001

1548

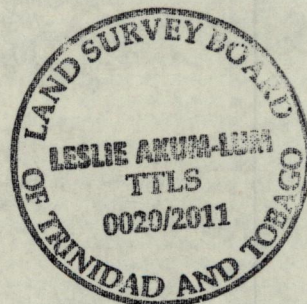
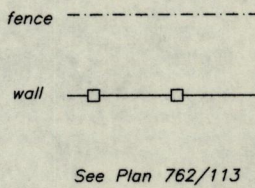
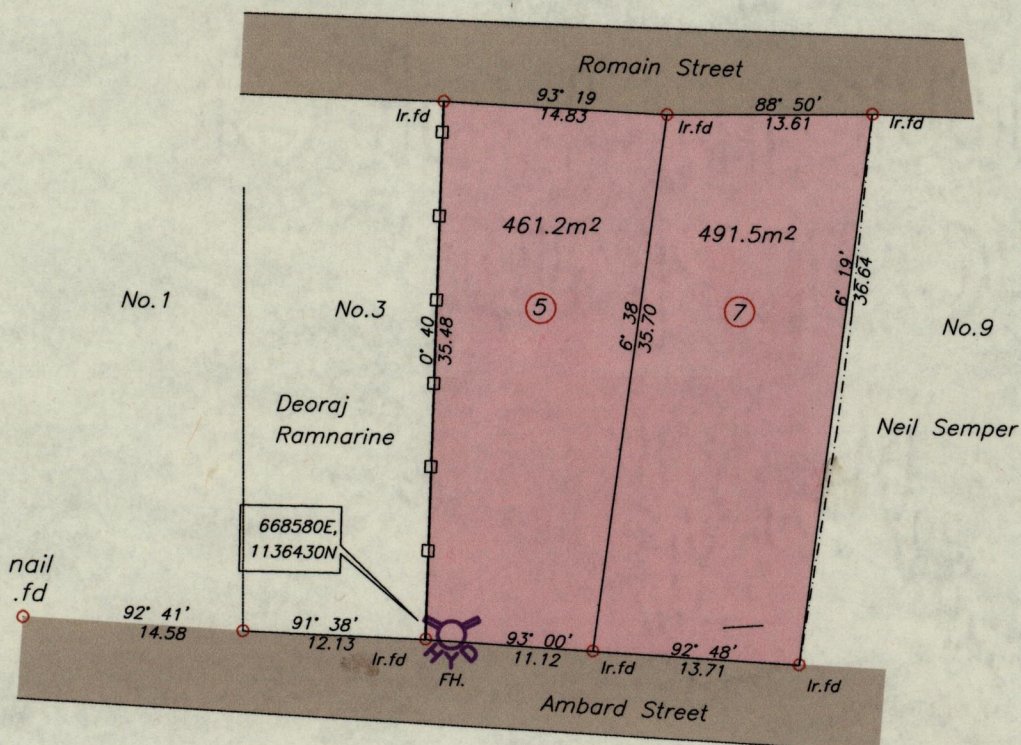
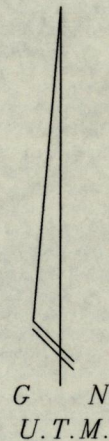
City of Naparima

County of Victoria

Cadastral Sheet G.3.J.

53E
2/d

43



Co-ordinates are UTM zone 20N Naparima Datum +/-5m scaled from L.&S. 1/10000 sheet.
Bearings are U.T.M. grid based on Magnetic Needle
Note: To obtain compass bearings subtract 3 minutes.

SCALE 1/500

Distances are in metres

PLAN of 2 Parcels of land coloured pink in the Borough of San Fernando
Containing together nine five two point seven square metres
Surveyed by me, with due authority, in August 2011 for Ryan Ramcharita
In accordance with Regulation 25 (1) of the Land Surveyors' Regulations 1998,
I certify that this plan is correct.

Checked by..... *L. B. Anum-Lum*
Entered..... Trinidad & Tobago Land Surveyor *6th Sept 2011*

Lal\plans\R\Ramcharita Ryan Ambars St San Fernando

