

Process ID# 43336

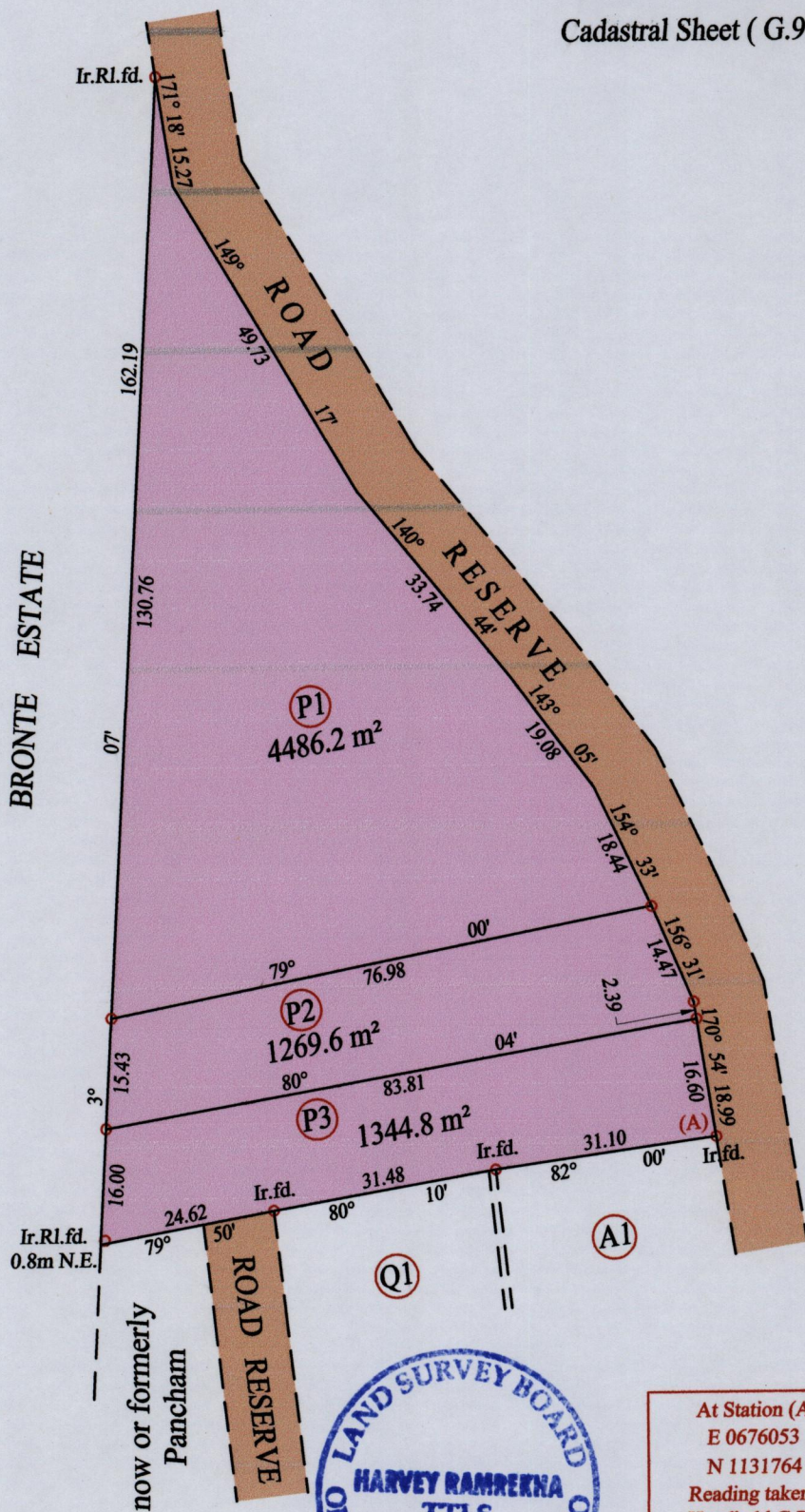
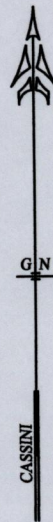
1548

42

Ward of Naparima

County of Victoria

Cadastral Sheet (G.9.F) 64.A.  
1/d



At Station (A)  
E 0676053  
N 1131764  
Reading taken with  
Handheld G.P.S.  
U.T.M. Zone 20  
Naparima  
± 5 m.

Vide Bk. 769 fol. 264

○ Denotes Iron put except stated otherwise.

Note: Bearings are cassini grid based on solar observations

SCALE : 1:1000

Distances are in metres

PLAN of 3 Parcels of land coloured pink in the Ward of Naparima  
Containing together seven thousand one hundred point six square metres  
Surveyed by me, with due authority, in August 2011 for Mrs. Pancham  
In accordance with Regulation 25 (1) of the Land Surveyors' Regulations 1998,  
I certify that this plan is correct.

Checked by .....

Entered on ..... Trinidad & Tobago Land Surveyor ..... 7.09.2011

MINISTRY OF AGRICULTURE  
Survey & Mapping Division  
#54  
SEP 08 2011  
LANDS & MARINE RESOURCES