

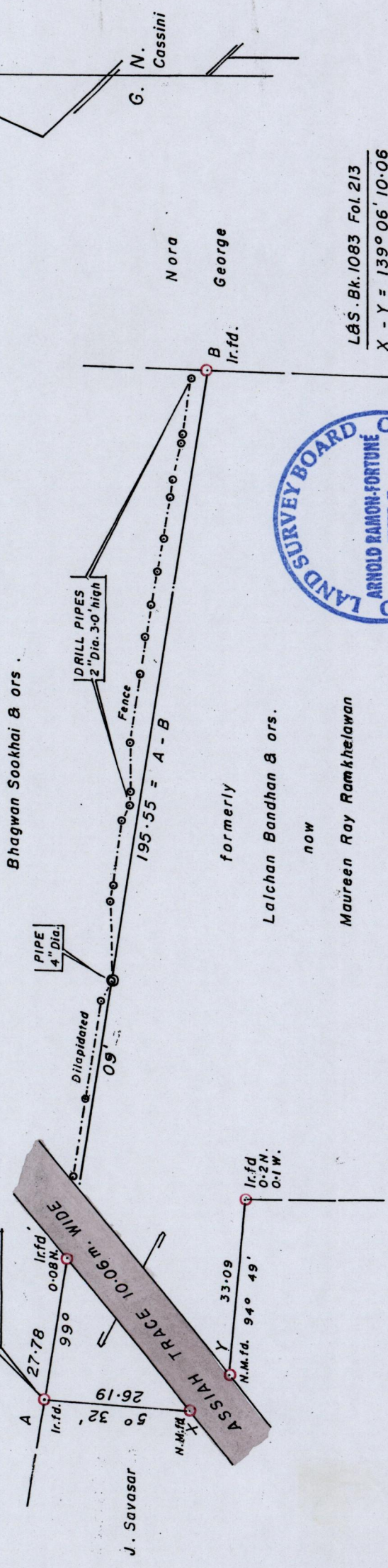
Cadastral Sheet, G.9.N. 64A 3/b

Ward of Naparima
County of Victoria

H.C. CLAIM No. C.V. 2011-01188

Process ID# 43275

E 676 436
N 1128 110
Map, Dat. 12-3



L&S. Bk. 1083 Fol. 213
X - Y = 139° 06' 10.06
SCALE: 1/1000
Distances are in metres

Bearings are based on Solar Observations

Plan showing a row of Drill Pipes supporting a Dilapidated Fence

In relation to a Boundary Line A-B at Assiah Trace, in the Ward of Naparima

Surveyed by me, with due authority in August 2011, at the request of the Honourable Mr. V. Kokaram.

In accordance with Regulation 25(1) of the Land Surveyors' Regulations 1998,

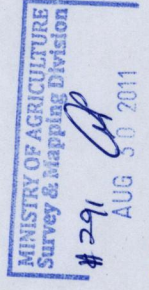
I certify that this plan is correct.

Checked by.....

Entered

Arnold Ramon-Fortune

Trinidad & Tobago, Land Surveyor 29th August 2011



LANDS & MARINE RESOURCES