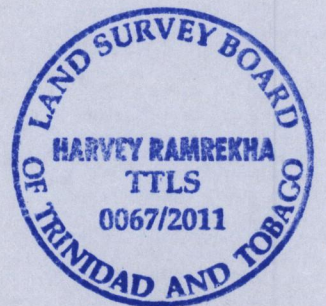
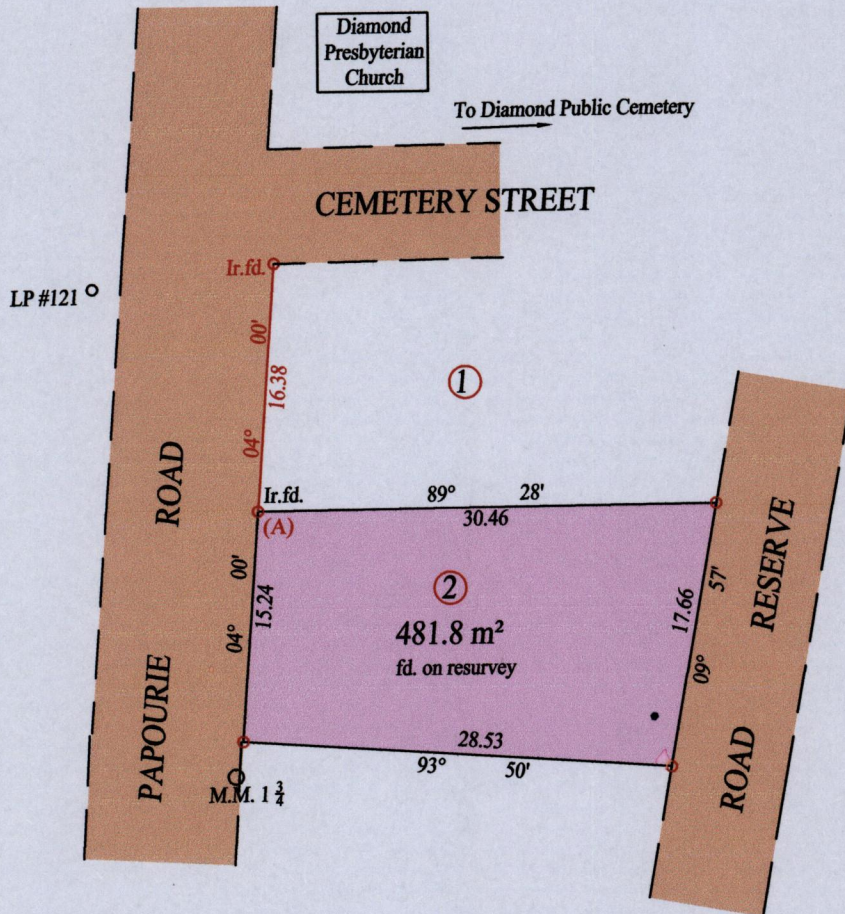


Process B# 43214

County of Victoria

Cadastral Sheet ( G.8.G. ) 63.C..

1/d



At Station (A)  
 E 0670604  
 N 1131152  
 Reading taken with  
 Handheld G.P.S.  
 U.T.M. Zone 20  
 Naparima  
 ± 5 m.

Vide Bk. 1052 fol. 87

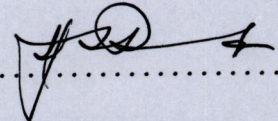
○ Denotes Iron found except stated otherwise.

SCALE : 1:500

Note: Bearings are cassini grid based on solar observations

Distances are in metres

PLAN of a Parcel of land coloured pink in the Ward of Naparima  
 Containing four hundred and eighty one point eight square metres  
 Surveyed by me, with due authority, in August 2011 for Ms. Huggins  
 In accordance with Regulation 25 (1) of the Land Surveyors' Regulations 1998,  
 I certify that this plan is correct.

Checked by ..... 

Entered on ..... Trinidad & Tobago Land Surveyor ... 18.08.2011

