

U.P.R.N.

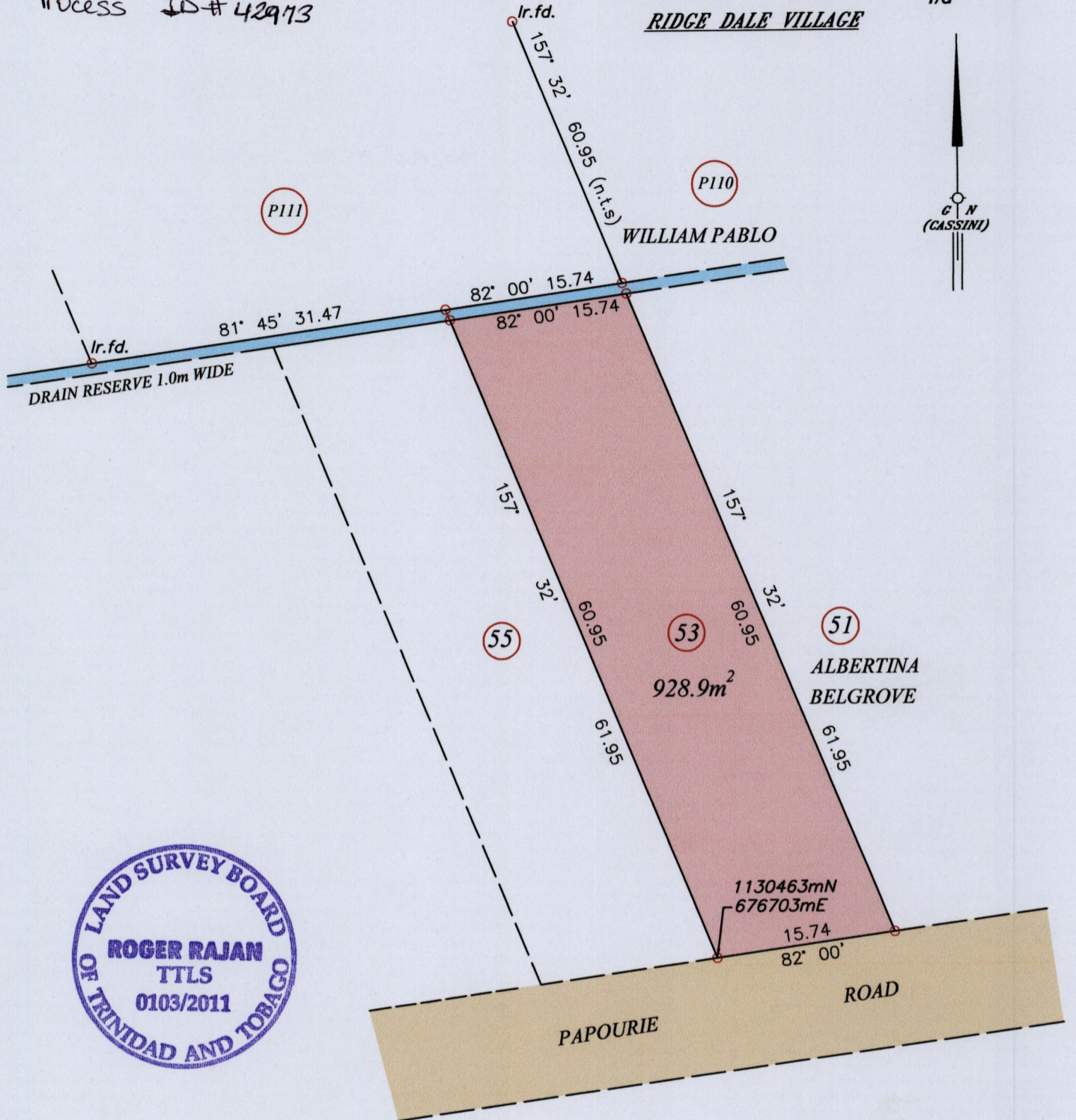
1548

Ward of Naparima
County of Victoria
Cadastral Sheet G.9.J., 64A
1/d
RIDGE DALE VILLAGE

32

Process ID # 42973

(Amended Plan)



Coordinate was obtained from Handheld GPS
Naparima Datum (+/- 5m)
U.T.M. Zone 20

(Area corrected from previous plan)

Vide: Plan X.E. 41

○ Denotes Iron put except stated otherwise.

Bearings are Cassini Grid based on Solar Observations

Plan of a Parcel of land coloured pink in the Ward of Naparima

Containing nine hundred and twenty eight point nine square metres.

Surveyed by me, with due authority, in November, 2009 at the request of Clinton Daniel

In accordance with Regulation 25 (1) of the Land Surveyors Regulations 1998,

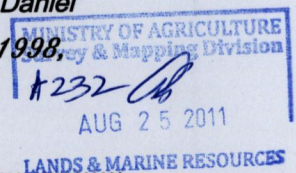
I certify that this plan is correct.

Checked by.....

Entered on Trinidad & Tobago Land Surveyor..... 24th August 2011

SCALE 1:500

Distances are in metres



LANDS & MARINE RESOURCES