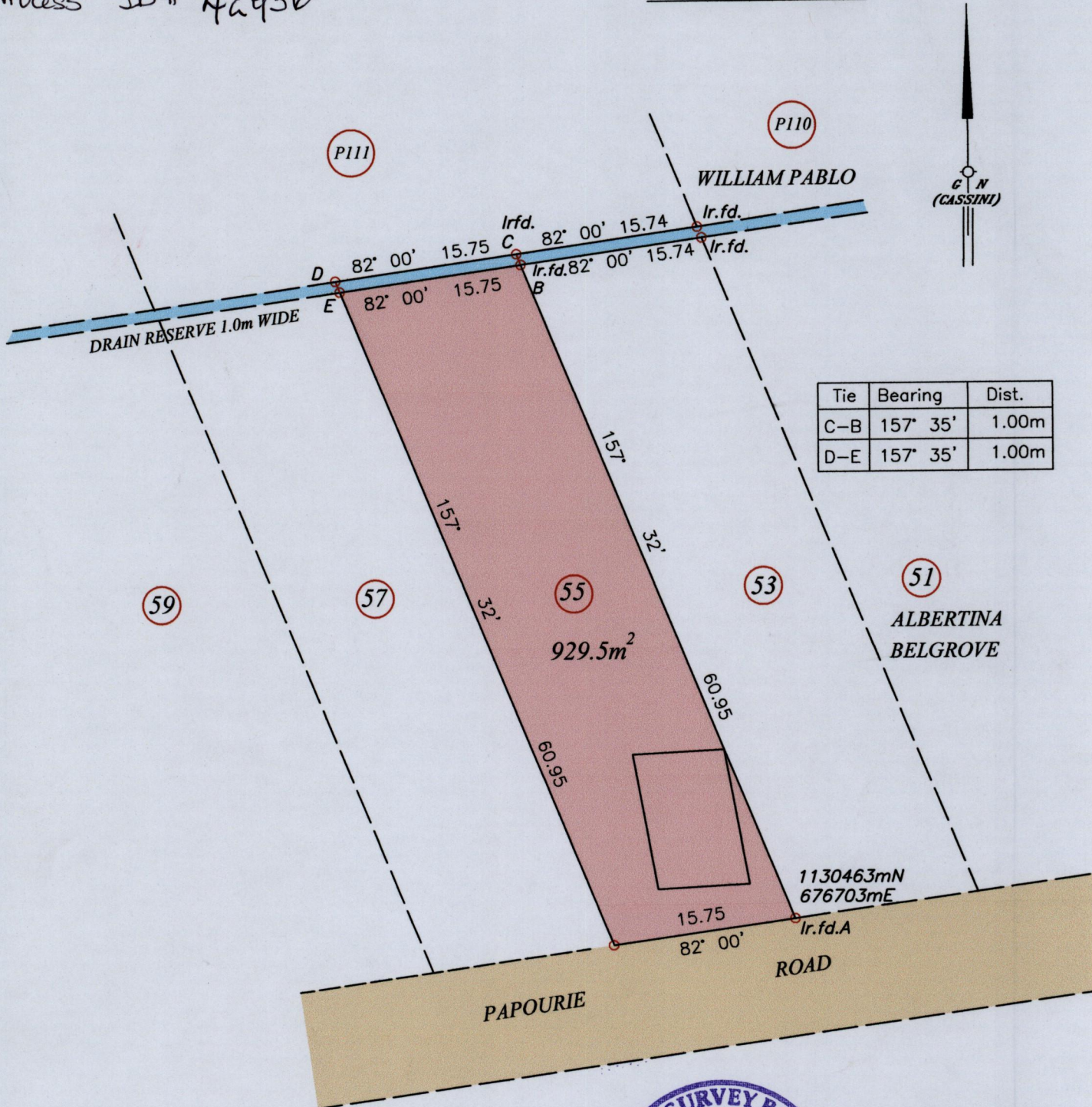


U.P.R.N.
Reg. Deed No.: 200501838704

1548 Ward of Naparima
County of Victoria
Cadastral Sheet G.9.J., 64A
1/d
RIDGE DALE VILLAGE

31

Process ID# 42936



Tie	Bearing	Dist.
C-B	157° 35'	1.00m
D-E	157° 35'	1.00m

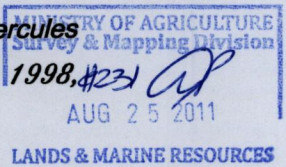
Coordinate was obtained from Handheld GPS
Naparima Datum (+/- 5m)
U.T.M. Zone 20



Vide: Plan X.E. 41

○ Denotes Iron put except stated otherwise.
 Bearings are Cassini Grid based on Solar Observations
 Plan of a Parcel of land coloured pink in the Ward of Naparima
 Containing nine hundred and twenty nine point five square metres.
 Prepared by me, with due authority, in August 2011 at the request of Rachel Hercules
 In accordance with Regulation 25 (1) of the Land Surveyors Regulations 1998,
 I certify that this plan is correct.

SCALE 1:500
Distances are in metres



Checked by.....
 Entered on Trinidad & Tobago Land Surveyor..... 24th August 2011