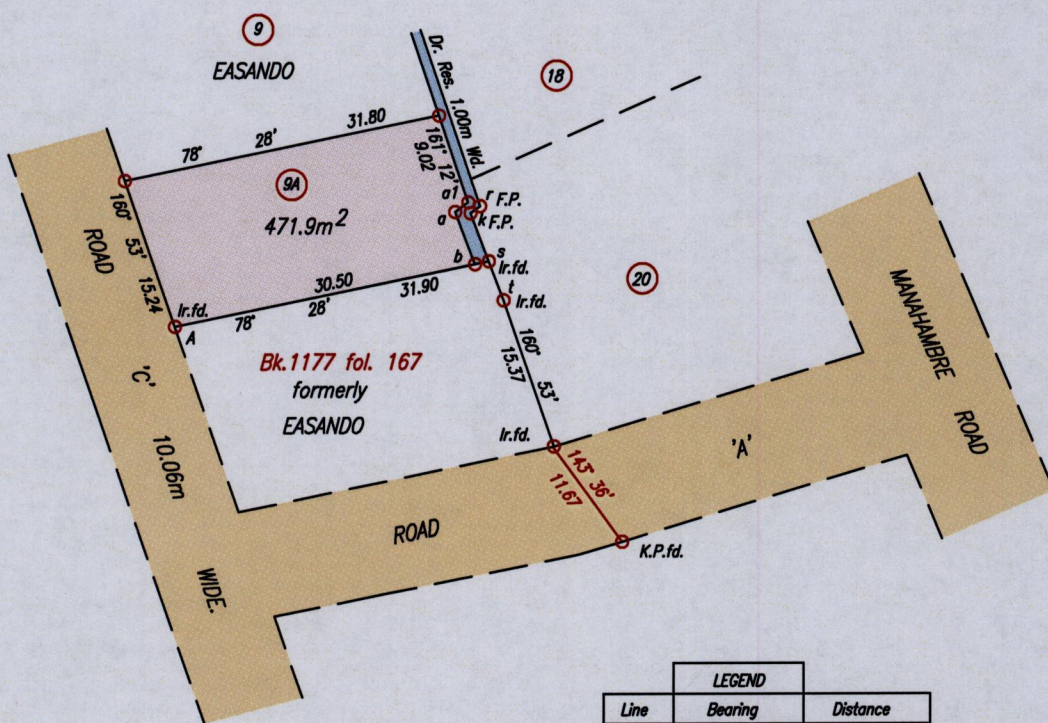


Process ID 42920

Ref. : Plan P.E. 20
Ref. : Plan F.B. 15
Ref. : Plan C.N. 17

Cadastral Sheet G.3.K. 53F
1/d & 3/b
Ward of Naparima
County of Victoria
Ste. Madeleine.



A : 671520mE, 1136379mN
(U.T.M. 20, WGS 84 (+/-5m))
Coordinates obtained from
hand held GPS.

LEGEND		
Line	Bearing	Distance
a a1	53° 47'	1.50
a b	158° 54'	5.61
k r	53° 47'	1.18
k s	158° 54'	5.07
s t	158° 54'	4.14



SCALE 1: 1000

Distances are in metres

o Denotes Iron put except otherwise stated

Bearings are Cassini Grid based on Solar Observations

PLAN of a Parcel of land coloured pink in the Ward of Naparima

Containing together four hundred and seventy one point nine square metres.

Surveyed by me, with due authority, in August, 2011 for East San Fernando Housing Development Ltd.

In accordance with Regulation 25 (1) of the Land Surveyors' Regulations 1998,

I certify that this plan is correct.

Winston Rancharan

MINISTRY OF AGRICULTURE
Survey & Mapping Division
4229
AUG 25 2011

Entered on.....

Trinidad & Tobago Land Surveyor. 24th August 2011.

LANDS & MARINE RESOURCES