

Process ID# 42833

1548

U.P.R.N.....

Address - Lot# 28 Manahambre Rd.,
St. Madeleine.

Ward of Naparima

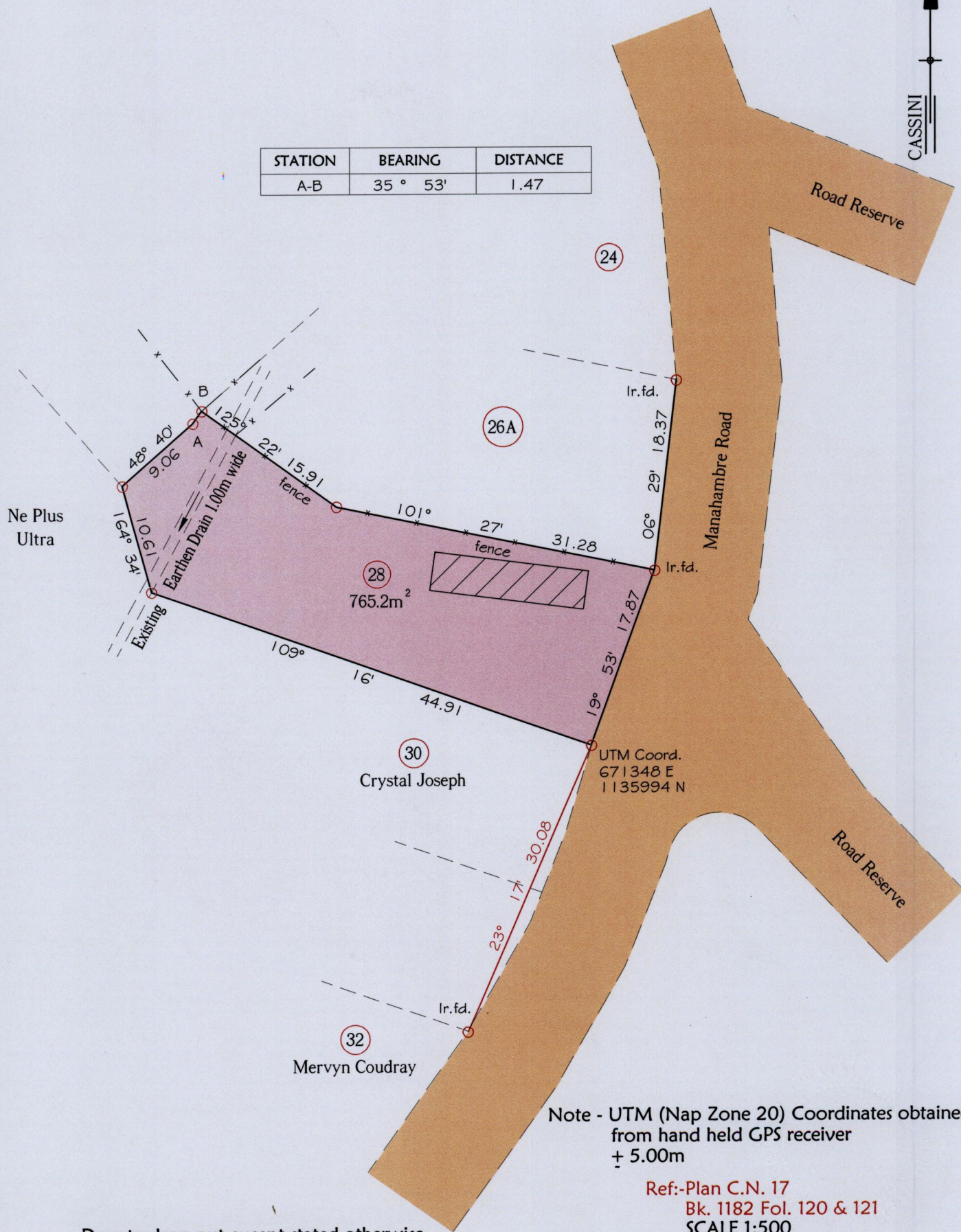
County of Victoria

Cadastral Sheet (G.3.K), $\frac{53F}{1/d}$

26

CASSINI

STATION	BEARING	DISTANCE
A-B	35° 53'	1.47



○ Denotes Iron put except stated otherwise.

Note: Bearings are Cassini grid based on solar observations Distances are in metres.

Plan of a Parcel of land coloured pink in the Ward of Naparima.

Containing seven hundred and sixty five point two metres square.

Surveyed by me, with due authority, in August 2011 for William Stewart.

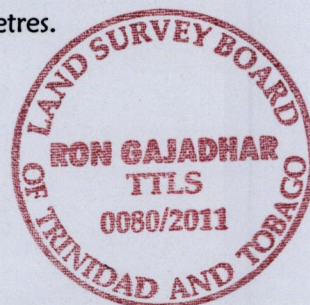
In accordance with Regulation 25(1) of the Land Surveyors' Regulations 1998,

I certify that this plan is correct.

Checked by

Entered

Trinidad & Tobago Land Surveyor 10/08/2011



MINISTRY OF AGRICULTURE
Survey & Mapping Division

#211

AUG 24 2011

LANDS & MARINE RESOURCES