

Process ID# 42816

U.P.R.N.....

La Resource Road
Off Dumfries Road
La Romain

1548

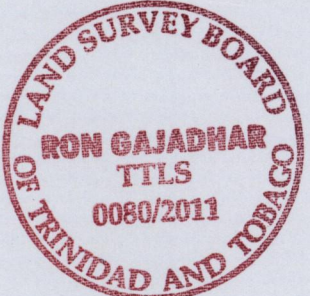
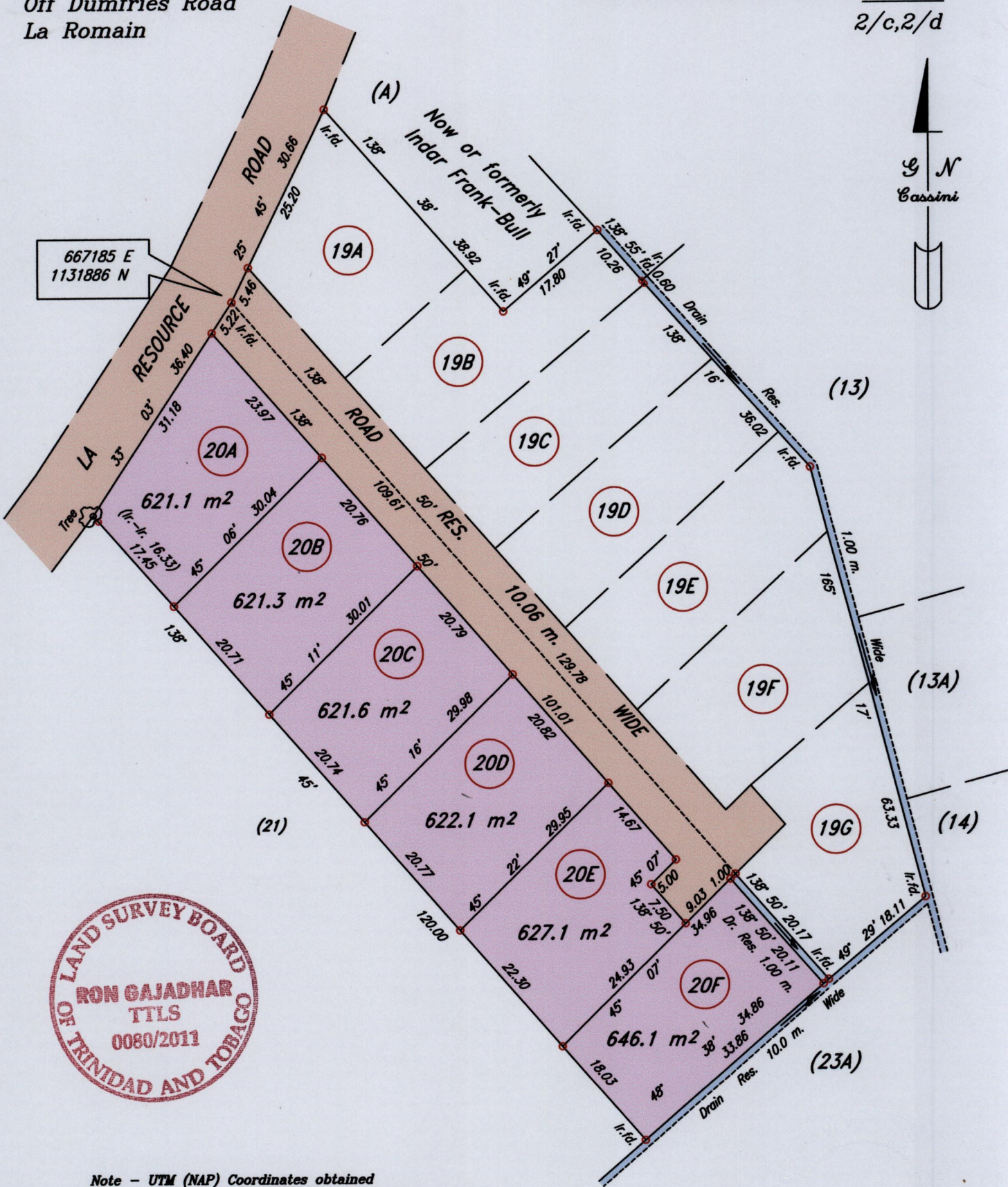
Ward of Naparima

County of Victoria

Cadastral Sheet G.7.&G.8. 63B

2/c,2/d

25



Note - UTM (NAP) Coordinates obtained from hand held GPS receiver ± 5.00m

○ Denotes Iron put, except otherwise stated.

Bearings are Cassini based on Solar Observations.

SCALE 1 :- 750

Distances are in metres

PLAN of 6 Parcels of land coloured pink in the Ward of Naparima Containing together zero point three seven five nine hectares

Prepared by me, with due authority, in August 2011 for Baal Sinanan

In accordance with Regulation 25 (1) of the Land Surveyors' Regulations 1998, I certify that this plan is correct.

Checked by.....

..... T.T.L.S.

Entered.....

Trinidad and Tobago Land Surveyor..... 18/ 38/ 20.11.

