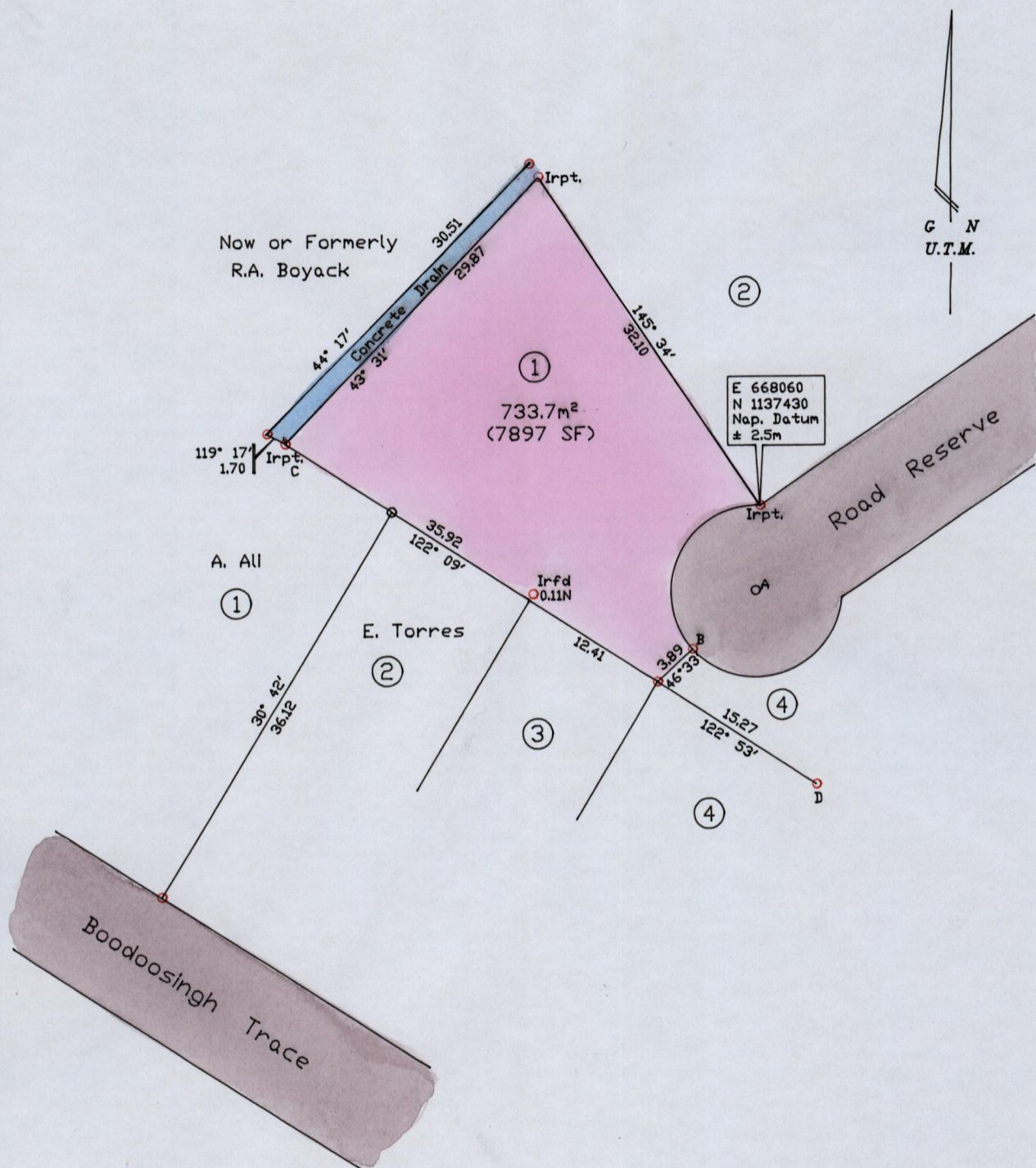


Process IDA 42800

City of San Fernando

County of Victoria

Cadastral Sheet G.3.E. $\frac{53E}{2/b}$



B - A = 46° 33' 7.00
 Irpt C - D = 122° 35' 51.18

SCALE 1/500

Distances are in metres

○ denotes irons found except where otherwise indicated

PLAN of a Parcel of land coloured pink in the City of San Fernando

Containing seven hundred and thirty three point seven square metres

Surveyed by me with due authority in August 2011 for Ramona Prayag

In accordance with Reg. 25(1) of the Land Surveyors' Regulations 1998,

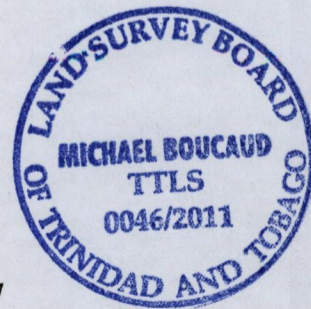
I certify that this plan is correct.

Checked by.....

Michael Boucaud TTLS

Entered.....

Trinidad & Tobago Land Surveyor..... 19th August 2011



MINISTRY OF AGRICULTURE
 Survey & Mapping Division
 #200 *AB*
 AUG 23 2011
 LANDS & MARINE RESOURCES