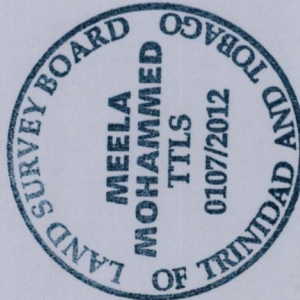


R.D.# 3121 of 1969

Process ID# 52300

Refs. Bk 327 Fol 7, 27, 39
Bk 950 Fol 246
Plan RH 196

Ir fd A
Hand-held G.P.S. Coords.
Naparima Zone 20
UTM E 0685242 ± 5m
N 1134203



PLAN of six parcels of land coloured pink in the Ward of Ortoire
Containing two point two four eight zero hectares.
Surveyed by me, with due authority, in April 2012 for Pancham Jagmohan & Ors.
In accordance with Regulation 25 (1) of the Land Surveyors' Regulations 1998,
I certify that this plan is correct.

Entered on.....

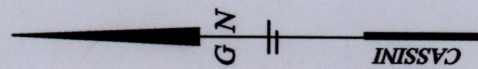
Meela Mohammed
Trinidad and Tobago Land Surveyor

1st April.....2012



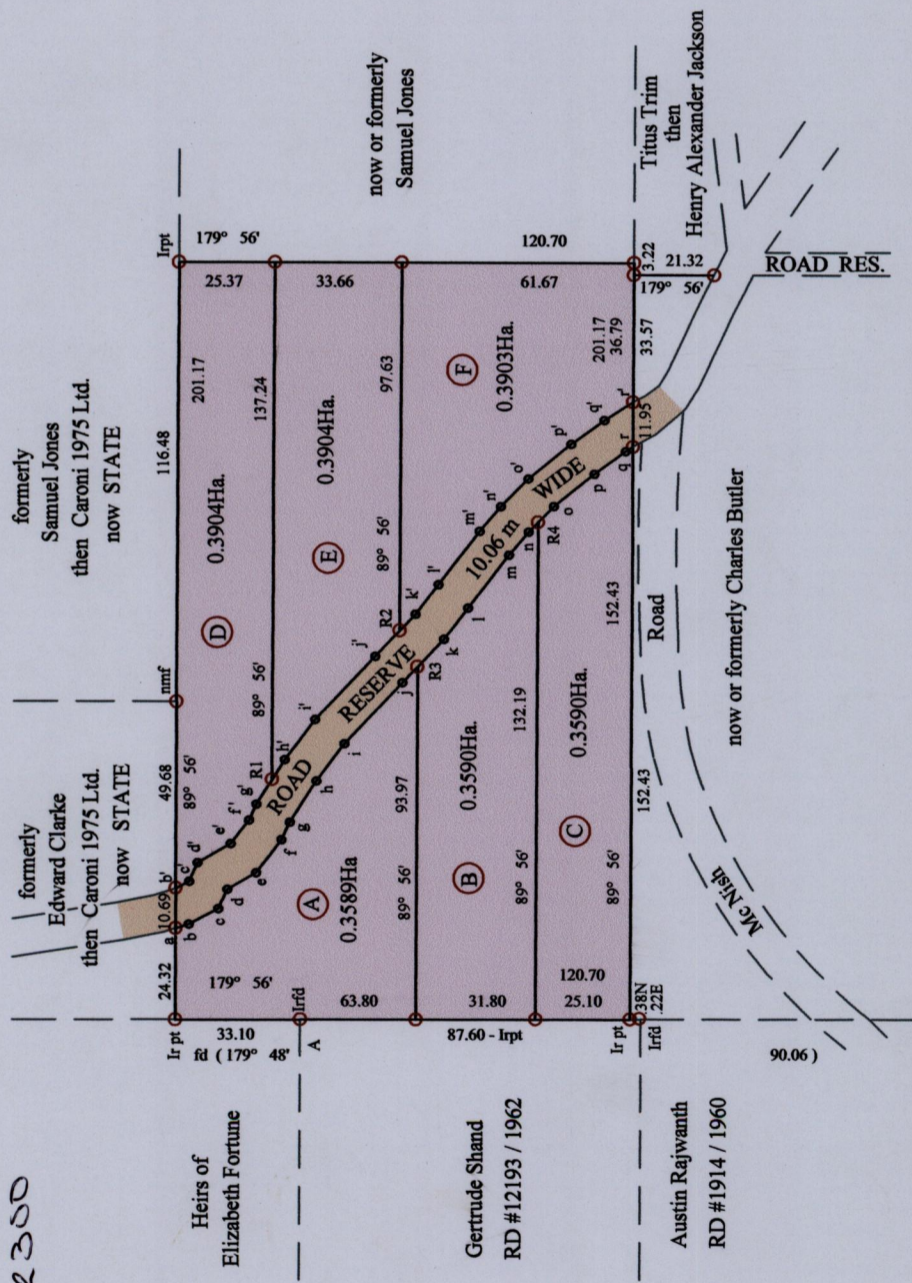
Cadastral Sheet G.5.O, 54E
County of Victoria
Ward of Ortoire

HINDUSTAN



1548

225



(6A OR OP)
2.4281 Ha
(inclusive of road)

Western Portion
(2A, 2R, 25.7F)
1.0768 Ha

(5A, 2R, 8.7F)
2.2480 Ha
(exclusive of road)

Eastern Portion
(2A, 3R, 23.0F)
1.1712 Ha

a-b	161° 29'	3.67	b-c'	152° 30'	4.00
b-c	152° 30'	8.81	c-d'	114° 03'	5.43
c-d	114° 03'	5.67	d-e'	150° 04'	10.08
d-e	150° 04'	8.83	e-f'	127° 21'	7.88
e-f	127° 21'	11.03	f-g'	114° 34'	4.64
f-g	114° 34'	5.12	g-h'	121° 58'	14.10
g-h	121° 58'	13.02	h-i'	126° 45'	13.40
h-i	126° 45'	12.40	i-j'	133° 15'	23.01
i-j	133° 15'	22.41	j-k'	133° 39'	15.39
j-k	133° 39'	15.89	k-l'	127° 33'	9.86
k-l	127° 33'	10.39	l-m'	127° 35'	17.88
l-m	127° 35'	17.66	m-n'	130° 08'	8.63
m-n	130° 08'	8.05	n-o'	134° 09'	10.39
n-o	134° 09'	9.45	o-p'	140° 48'	14.69
o-p	140° 48'	13.83	p-q'	143° 58'	10.83
p-q	143° 58'	10.26	q-r'	147° 14'	9.06
q-r	147° 14'	2.31	g'-R1	121° 58'	7.80
j-R3	133° 39'	5.76	R1-h'	121° 58'	6.30
R3-k	133° 39'	10.13	j'-R2	133° 39'	9.41
n-R4	134° 09'	3.54	R2-k'	133° 39'	5.98
R4-o	134° 09'	5.91			

o denotes iron put except otherwise stated
Bearings are Cassini Grid based on Solar Obs.
Distances are in Metres
SCALE 1/2000