

Process JDA# 51916

U.P.R.N.:

Reg. Deed DE 200100861937

15488

Cadastral Sheet G. 3. E 53E  
2/b

City of San Fernando

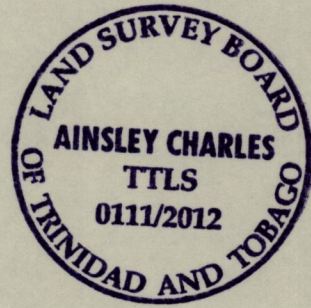
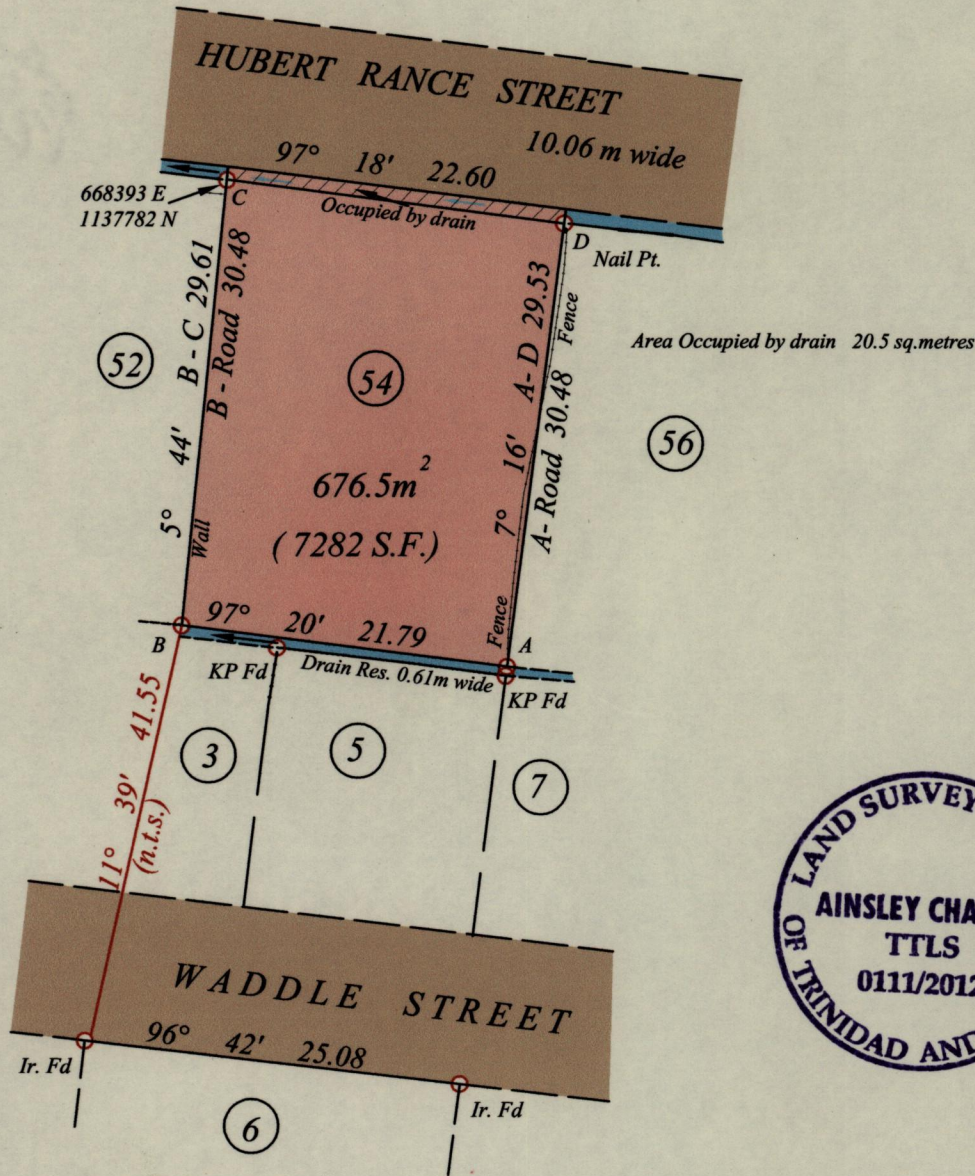
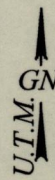
County of Victoria

VISTABELLA

223

Vide: Plan EE 75

Bk 1242 Fol. 82



SCALE : 1:500  
Distances are in Metres

Naparima coordinates of Pt. C were obtained from observations done with a hand held GPS receiver. Coordinates are precise to ± 5 metres and are therefore not suitable for boundary location.

U.T.M. Bearings are based on Solar Observations

○ Denotes Iron Put unless otherwise stated

Plan of a parcel of land coloured pink in the City of San Fernando, containing six seven six point five square metres, surveyed by me, with due authority, in March 2012, at the request of John Seudat.

In accordance with Reg. 25 (1) of the Land Surveyors' Regulations 1998, I certify that this plan is correct.

Entered

*Ainsley Charles*

Trinidad and Tobago Land Surveyor... 30 March 2012

