

Process ID# 52157

C.F. PLAN PE 10
R.D. 9395/1986

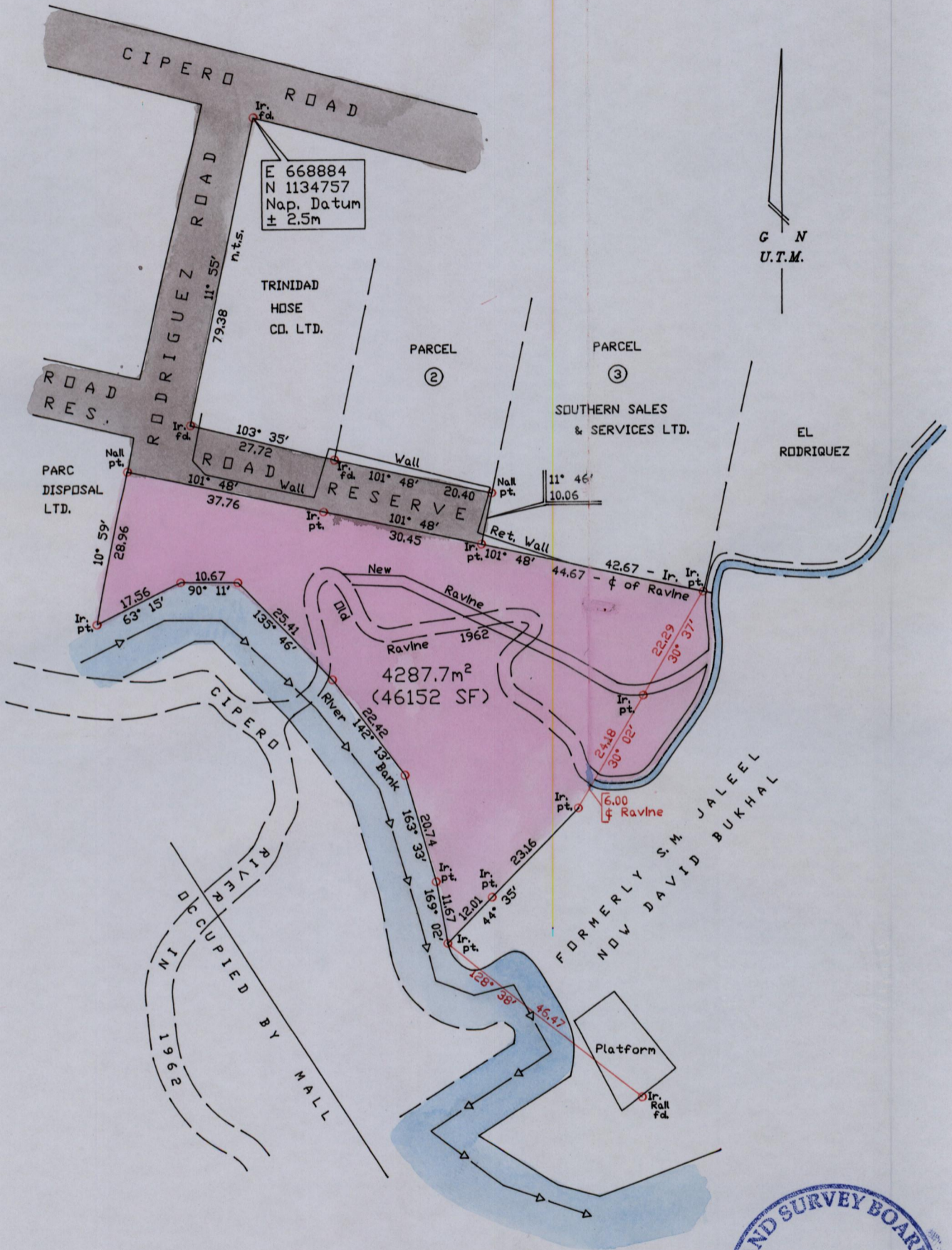
1548

218

City of San Fernando

County of Victoria

Cadastral Sheet G.3.N. $\frac{53E}{4/b}$



SCALE 1/1000

Note: To obtain Cassini Grid +18 minutes

Distances are in metres

PLAN of a Parcel of land coloured pink in the City of San Fernando
Containing four thousand, two hundred and eighty seven point seven square metres
Surveyed by me with due authority in March 2012 for Parc Disposal Ltd.
In accordance with Reg. 25(1) of the Land Surveyors' Regulations 1998,
I certify that this plan is correct.

Checked by.....

Michael Boucaud T.T.L.S.

Entered.....

Trinidad & Tobago Land Surveyor..... 27th March 2012

