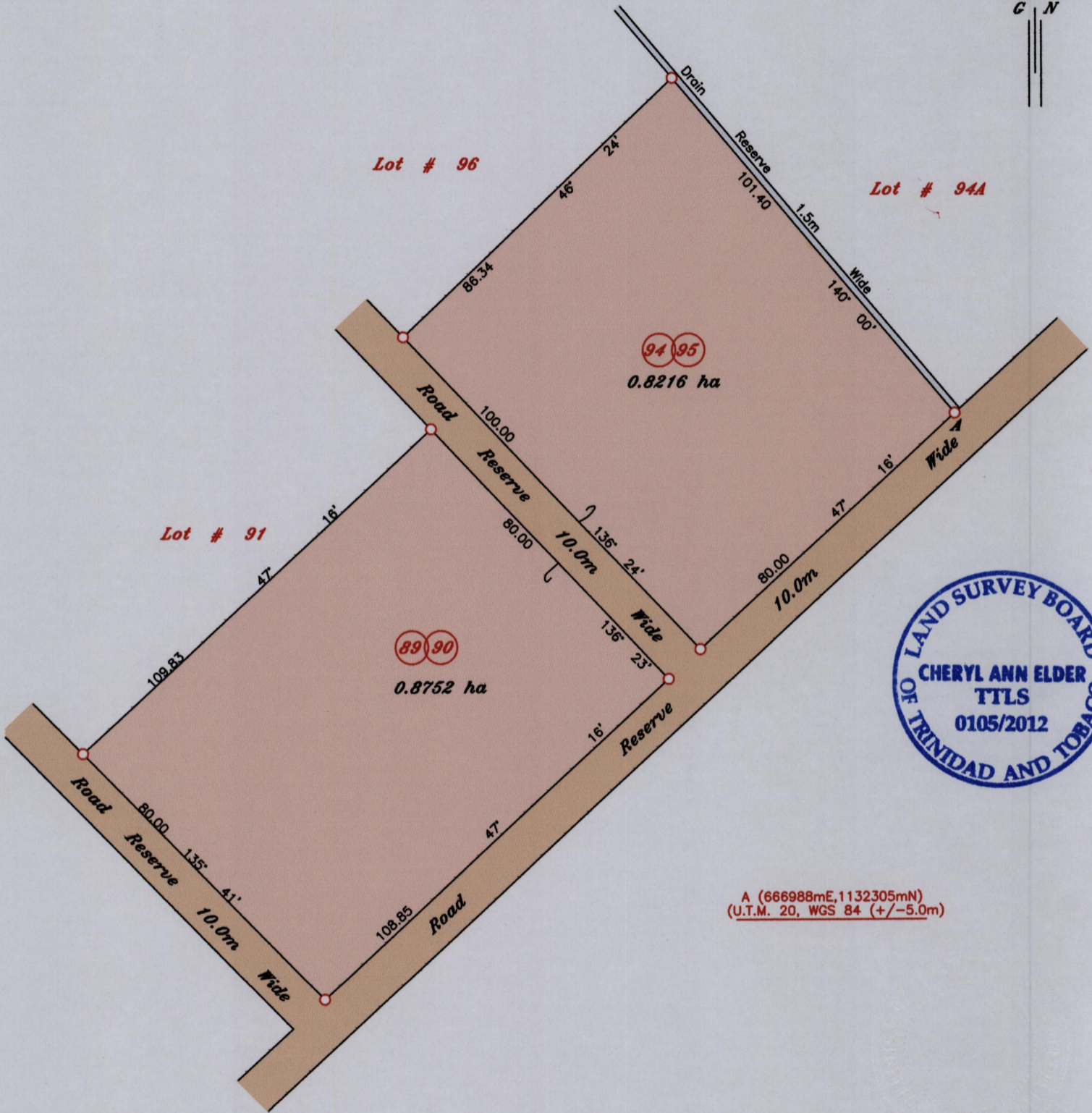
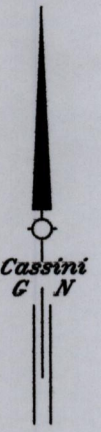


Process ID # 52094

1548 Cadastral Sheet ^{63B}/_{2/a}
Ward of Naparima
County of Victoria

2131



A (666988mE, 1132305mN)
(U.T.M. 20, WGS 84 (+/-5.0m))

SCALE 1/1250

Distances are in Metres

- Denotes Iron put except otherwise stated
- Bearings are based on Solar Observations

Plan of 4 parcels of land Amalgamated coloured pink in the Ward of Naparima
Containing together one point six nine six eight hectares

Prepared by me, with due authority, in January 2012 for
In accordance with Regulation 25 (1) of the Land Surveyors Regulations 1998,
1998, I certify that this plan is correct.

Alston Miller, Malvin Matthews,
Victor Manrique, Joanne Bishop

Checked by.....

Cheryl Ann Elder

Entered.....

Trinidad & Tobago Land Surveyor 20th March, 2012

